

DECtalk™ Software

Programmer's Guide

October 1999

This guide contains an introduction to DECtalk Software and the DECtalk Software API.

Revision and Update Information: This document supersedes the DECtalk Software Programmer's Guide, Version 4.5.

Operating System: Microsoft Windows 95/98/NT/CE
Tru64 UNIX

Software Version: DECtalk Version 4.6

SMART Modular Technologies, Inc. and its subsidiaries
Fremont, California

October 1999

The information in this publication is subject to change without notice.

SMART MODULAR TECHNOLOGIES, INC. AND ITS SUBSIDIARIES SHALL NOT BE LIABLE FOR TECHNICAL OR EDITORIAL ERRORS OR OMISSIONS CONTAINED HERIN, NOR FOR INCIDENTAL OR CONSEQUENTIAL DAMAGES RESULTING FROM THE FURNISHING, PERFORMANCE, OR USE OF THIS MATERIAL. THIS INFORMATION IS PROVIDED "AS IS" AND SMART MODULAR TECHNOLOGIES, INC. AND ITS SUBSIDIARIES DISCLAIM ANY WARRANTIES, EXPRESS, IMPLIED, OR STATUTORY, AND EXPRESSLY DISCLAIM THE IMPLIED WARRANTIES OF MERCHANTABILITY, FITNESS FOR PARTICULAR PURPOSE, GOOD TITLE, AND AGAINST INFRINGEMENT.

This publication contains information protected by copyright. No part of this publication may be photocopied or reproduced in any form without prior written consent from SMART Modular Technologies, Inc.

© 1999 SMART Modular Technologies, Inc. © 1997, 1998, 1999 Digital Equipment Corporation. All rights reserved.
Printed in U.S.A.

The software described in this guide is furnished under a license agreement or nondisclosure agreement. The software may be used or copied only in accordance with the terms of the agreement.

The stylized "S" and "SMART" as well as "SMART Modular Technologies" are registered trademarks of SMART Modular Technologies, Inc.
The SMART logo is a trademark of SMART Modular Technologies, Inc.
DECTalk is a trademark of SMART Modular Technologies, Inc.

Compaq, the Compaq logo, and the Digital logo are registered in the U.S. Patent and Trademark Office. DEC, DIGITAL, and OpenVMS are trademarks of Compaq Computer Corporation..

Intel is a trademark of Intel Corporation.

Microsoft, Windows, Windows 95, and Windows NT are registered trademarks of Microsoft Corporation.

Motif is a registered trademark of the Open Software Foundation, Inc.

RoboHELP is a registered trademark of Blue Sky Software Company. SoundBlaster is a registered trademark of Creative Labs, Inc.

UNIX and Tru64 UNIX are registered trademarks in the United States and other countries licensed exclusively through X/Open Company, Ltd.

Other product names mentioned herein may be trademarks and/or registered trademarks of their respective companies.

This document was prepared using Microsoft Word 97 to generate MS Word 6.0/95 compatible files. The online help system was prepared with Microsoft Word 97 and the RoboHELP help authoring tool.

Contents

Preface	vii
Purpose and Audience	vii
Structure	vii
Conventions	xi
 Chapter 1 — Introduction to DECtalk Software	1-1
DECtalk Software Features and Functions	1-2
Latest Version of Speech-Synthesis Technology	1-2
Letter Mode, Word Mode, and Clause Mode	1-2
Short Command Strings	1-2
High-Quality Speech and Word Pronunciation Accuracy	1-2
Pronunciation Heuristics	1-2
DECtalk Software Components	1-3
Sample Program Applet	1-3
Speak Program Applet	1-5
Text-to-Speech DDE Server	1-6
Programming Aids	1-6
DECtalk Software APIs	1-6
DECtalk Software In-Line Commands	1-6
DECtalk Software Dictionaries	1-7
Default Locations for Dictionaries	1-8
Using the Components	1-9
Application Programmer	1-9
General User	1-9
How It Works	1-11
 Chapter 2 — Using the Program Applets to Learn DECtalk Software Basics 2-1	
Starting the Sample Applet and Opening a Text File	2-2
Inserting DECtalk Software In-Line Commands (Syntax Rules)	2-4
Additional Syntax Rules	2-5

Changing the Speaking Voice.....	2-6
Editing a Text File and Changing the Speaking Rate.....	2-8
Overview of the User Dictionary Build Tool.....	2-10
Building a User Dictionary	2-13
Using the DECtalk Software Speak Applet.....	2-17
Running DECtalk Software from Other Applications	2-20
Step 1 — Creating a Word Macro and Associating it with a File or Document	
Template (for Word 7.0)	2-21
Step 2 — Associating the Macro with a Toolbar Button.....	2-24
Step 3 — Launching and Configuring the DECtalk Software Text-to-Speech Server	2-26
Step 4 — Speaking Text in a Microsoft Word .doc File with the DECtalk TTS Server	2-28
Using the Say Command-Line Applet	2-30
 Chapter 3 — Introduction to the DECtalk Software API	 3-1
The Core API Calls.....	3-4
TextToSpeechSpeak	3-4
Important Text-Queuing Information	3-5
Clause-Based Synthesis.....	3-5
Callback Routines and Window Procedures.....	3-5
Phoneme Notifications.....	3-6
Error Messages	3-9
Index Mark Messages.....	3-10
Buffer Messages.....	3-10
Audio Output Control Calls.....	3-13
Blocking Synchronization Call	3-14
Control and Status Calls	3-15
Special Text-To-Speech Modes	3-16
Wave-File Mode	3-16
Log-File Mode	3-16
Speech-To-Memory Mode	3-17
Initialization of Memory Buffers	3-17
Dictionary Calls (UNIX only).....	3-21
Creating a User Dictionary.....	3-21
Loading the Main Dictionary	3-21
Loading the User Dictionary.....	3-22
Dictionary Calls (Windows only).....	3-23

Creating a User Dictionary.....	3-23
Loading the Main Dictionary (Dynamic or Static Engine)	3-23
Loading the Main Dictionary (Static Engine)	3-24
Loading the User Dictionary	3-25
Registry Entry Information.....	3-26
Registry Entry Formats and Locations	3-26
Registry Entry Key.....	3-28
Sample Programs (UNIX only)	3-29
Building Sample Programs.....	3-30
Header Files.....	3-30
Shareable Libraries	3-31
Sample Programs (Windows only)	3-32
 Chapter 4 — How to do Multi-Language Programming	 4-1
Starting a Language	4-2
Selecting a Language.....	4-2
Closing a Language	4-2
Example	4-3
 Glossary	 1
 Index	 1

Figures

Figure 1-1 Visual Overview of the Sample Program Applet.....	1-4
Figure 1-2 Visual Overview of the Speak Program Applet.....	1-5
Figure 1-3 In-Line Command Components	1-7
Figure 1-4 Flow of the DECtalk Software Text-To-Speech Conversion Process.....	1-11
Figure 2-1 Starting the Sample Applet and Opening a Text File.....	2-2
Figure 2-2 Rules for DECtalk Software In-Line Command Syntax.....	2-4
Figure 2-3 Changing DECtalk Software Voices.....	2-7
Figure 2-4 Editing a Text File and Changing the Speaking Rate.....	2-8
Figure 2-5 User Dictionary Build Tool	2-10
Figure 2-6 Building a User Dictionary	2-13

Figure 2-7 Saving and Compiling the Dictionary.....	2-15
Figure 2-8 Using the DECtalk Software Speak Applet	2-17
Figure 2-9 Highlighting Spoken Text.....	2-19
Figure 2-10 Creating a Word Macro.....	2-21
Figure 2-11 Associating the Macro with a Toolbar Button	2-24
Figure 2-12 Launching and Configuring the DECtalk Server.....	2-26
Figure 2-13 Speaking Text in a Microsoft Word .doc File with the DECtalk Software TTS Server	2-28

Tables

Table 2-1 Starting the Sample Applet and Opening a Text File.....	2-3
Table 2-2 DECtalk Voices and their Associated Values.....	2-6
Table 2-3 Changing Voices	2-7
Table 2-4 Editing a Text File and Changing the Speaking Rate	2-9
Table 2-5 Building a User Dictionary	2-14
Table 2-6 Saving and Compiling the Dictionary	2-16
Table 2-7 Using the DECtalk Speak Application.....	2-18
Table 2-8 Creating a Word Macro	2-22
Table 2-9 Associating the Macro with a Toolbar Button.....	2-25
Table 2-10 Launching and Configuring the DECtalk TTS Server	2-27
Table 2-11 Speaking Text in a Microsoft Word .doc file with the DECtalk TTS Server	2-29
Table 3-1 Text-To-Speech Calls by Category	3-2
Table 3-2 API Control and Status Calls.....	3-15
Table 3-3 Special Text-To-Speech Modes.....	3-16

Preface

Purpose and Audience

This guide, *DEctalk Software Programmer's Guide*, is for the application programmer who wants to design and build text-to-speech applications with DEctalk Software. Use this guide in conjunction with the *DEctalk Software Reference Guide* and the *DEctalk Software Installation Guide*.

Structure

The design of this guide gives you quick and easy access to information. Its organization can help you easily learn about new topics and perform specific tasks related to the use of the program applets or development of a DEctalk Software application.

The guide is organized as follows:

- | | |
|-----------|--|
| Chapter 1 | Introduction to DEctalk Software |
| Chapter 2 | Using the Program Applets to Learn DEctalk Software Basics |
| Chapter 3 | Introduction to the DEctalk Software API |
| Chapter 4 | How to do Multi-Language Programming |

What's New in DEctalk Software V4.6?

DEctalk Software V4.6 contains the following new features:

- Registry entries have been changed to reflect the transition of DEctalk Software from Compaq Computer Corporation to SMART Modular Technologies, Inc.
- Installation tested on Windows 98.
- Support for the German language.
- Disabled license error pop-up window from DAPI engine.
- Significantly increased compliance with the Microsoft Speech API (SAPI); see APPENDIX3.TXT.
- Enhanced Spanish Latin American and Spanish Castilian.

- CE version, which includes a static version of windic.exe for the Windows host to support a user-defined dictionary, and full registry support.
- Y2K compliance.
- Over 170 bugs fixed, including:
 - ❑ Various application or system hangs or crashes caused by data path, synchronization and dictionary failures are corrected.
 - ❑ User dictionary compiler failures are corrected.
 - ❑ Wave file headers are corrected.
 - ❑ Use of extended ASCII characters are corrected.
 - ❑ New in-line command **Say filtered-letter** has been added.
 - ❑ Number processing changes automatically by language.
 - ❑ Memory leaks have been corrected.
 - ❑ Main dictionary wordclass and function words have been added.
 - ❑ Word and number stressing are corrected.
 - ❑ Diphthong, phoneme, homograph and allophone processing are corrected.

What's New in DECtalk Software V4.5?

DECTalk Software V4.5 for Windows 95 and Windows NT contains the following new features:

- Distributed on CD-ROM.
- Year 2000 support speaks four-digit year specifications as four-digit year specifications, for example, the year 1998 is spoken as nineteen ninety eight, and speaks 2-digit year specifications as a 2-digit number without assuming the century, for example, the year 98 is spoken as ninety eight.
- United Kingdom English is added.
- SAPI mark syntax (\mrk=\ tag) is working. The TextData interface now accepts tagged text. The \mrk=\ tag is the only tag supported. Other tags are ignored.
- ITTSBufNotifySink: The BookMark and WordPosition interfaces are now functional. The timing of the TextDataStarted and TextDataDone notifications is corrected.

- ITTSNotifySink: The Visual interface is now functional; the timing of the AudioStart and AudioStop notifications is corrected.
- OLE notification support, AudioStart and AudioStop, now returned.
- DECTalk Software V4.5 provides better indexing performance than previous versions.
- Multi-Language (ML) support is functional.
- Sample programs Speak and dtsample are updated to Multi-Language (ML) functionality. All sample applets are ML-compliant code. Some sample applets demonstrate ML-application programming.
- The User Dictionary compiler now handles accent characters (extended ASCII).

The current DECTalk Software implementation of the Microsoft Speech API (SAPI) is described in the appendix3.txt file that is included with the DECTalk Software installation files.

What's New in DECTalk Software V4.4?

DECTalk Software V4.4 for the Windows operating system contains the following new features:

- Available in multiple languages: American English, Castilian Spanish, Latin-American Spanish, and German.
- Advanced preprocessing rules.
- Email parsing has been added to the Mode in-line command to expand abbreviations and initialisms as well as stripping unwanted header and footer information.
- The speak.exe demonstration program now shows highlighting.

The **Sync** command, which previously had to be reversed, now works as documented.

What's New in DECTalk Software V4.3?

DECTalk Software V4.3 for the Windows operating system contains the following new features:

- Support for operation on the Windows operating system.
- Support for the Microsoft Speech API (SAPI).
- Support for OLE.
- Support for multi-threaded and multi-instance operation.
- Expanded main dictionary.
- A new document, the *DECtalk Software Reference Guide* has been added. This guide provides an overview and reference listings of the DECtalk in-line commands.
- User-dictionary suffix processing to help locate words in the user dictionary.
- Expanded pronunciation rules and improved pronunciation.
- Homograph processing.
- Improved in-line index-mark processing.
- Added the following in-line commands:
 - ❑ Play command to play wave audio files in line with text.
 - ❑ Tone command to generate tones.
 - ❑ Dial command to generate DTMF tones used to dial telephone numbers.
 - ❑ Stereo volume control commands.
- A new Text-to-Speech Dynamic Data Exchange (DDE) server that can be used to run DECtalk Software from within an application, such as MS Word.
- A speech-to-memory Sample program.
- An enhanced User Dictionary Builder that automatically translates text strings into phonemes.
- A new command-line applet named Say that runs DECtalk Software from the Windows command line.

Conventions

The following conventions are used in this guide:

Convention	Meaning
enter	<i>Enter</i> means type the required information and press the Enter key.
mouse	<i>Mouse</i> refers to any pointing device, such as a mouse, a puck, or a stylus.
MB1	<i>MB1</i> indicates the left mouse button.
click	<i>Click</i> means to press and release MB1.
Double click	<i>Double click</i> means to press and release MB1 twice in rapid succession without moving the mouse.
drag	The phrase <i>drag</i> means to press and hold MB1, move the mouse, and then release MB1 when the pointer is in the desired position.
Ctrl/x	Press the Ctrl key while you press another key.
Menu →Command	The right arrow key indicates an abbreviated instruction for choosing a command from a menu. For example, <i>File →Exit</i> means pull down the File menu, move the pointer to the Exit command, and release MB1.
Courier type	<i>Courier type</i> indicates text that is typed or displayed on the screen. This is most often used for program code examples. <i>Courier type</i> also indicates file names.
User Input	Boldface type in interactive examples indicates information you enter from the keyboard. For example: A:> SETUP
XX YY and XXn YYn	In DECtalk Software in-line command syntax, XX and YY indicate options and parameters. When more than one choice of options or parameters is allowed, the symbol XXn or YYn with n replaced by a numeral indicates each option or parameter in the symbolic representations, such as [:phoneme XX1 XX2 YY]. Note that the number of characters in the symbolic representation does NOT represent the number of characters allowed in the actual option or parameter name.
DD and DDn	In DECtalk Software in-line command syntax, DD indicates a decimal (base 10) value. When more than one decimal values are allowed, the symbol DDn with n replaced by a numeral represents each allowed value, such as [:volume XX DD1 DD2]. Note that the number of characters in the symbolic representation does NOT represent the number of characters allowed in the actual decimal value.

Conventions used in API calls

Italics Italic text emphasizes important information.

Unless you are otherwise instructed, press **Enter** after typing responses to command prompts.

Chapter 1 — Introduction to DECtalk Software

DECtalk Software provides programming resources to support application solutions that require text-to-speech output. This chapter provides a general overview of DECtalk Software. Topics include:

- DECtalk Software features and functions
- DECtalk Software components
- Text-to-Speech DDE server
- Programming aids
- Using the components
- How it works

DECTalk Software Features and Functions

DECTalk Software enables applications to extend the capabilities of your personal computer by turning text files into spoken words. With only a standard PC sound card for audio output, the programming resources provided by DECTalk Software allow applications to accurately read ASCII text from a variety of sources, such as electronic mail and word processors. Nine different voices are provided, and users can control voice pitch, rate of speech, and word or phrase emphasis.

Latest Version of Speech-Synthesis Technology

DECTalk Software contains the latest version of DECTalk Software speech synthesis. This incorporates a number of improvements from earlier versions of DECTalk and is a software-only version.

Letter Mode, Word Mode, and Clause Mode

DECTalk Software can speak single characters immediately, without waiting for an entire clause to be buffered. DECTalk Software also provides normal clause buffering for natural speech. DECTalk Software can speak letters, words, phrases, clauses, paragraphs, and whole documents. DECTalk Software allows the application to terminate speech immediately instead of waiting for the buffered text to complete processing.

Short Command Strings

Many of the DECTalk Software in-line command strings can be abbreviated for greater ease of use in applications.

High-Quality Speech and Word Pronunciation Accuracy

DECTalk Software speech retains its high quality. In addition, functionality and acoustic phonetic quality are improved. Also, DECTalk Software has a large built-in dictionary that enables accurate pronunciation of individual words and enhances their rhythmic naturalness.

Pronunciation Heuristics

DECTalk Software includes pronunciation heuristics that recognize and parse unpronounceable sequences, such as sequences of uppercase initials (FBI, AAA, and so forth) and sequences with no vowels (CBS, NBC, for example).

DECtalk Software Components

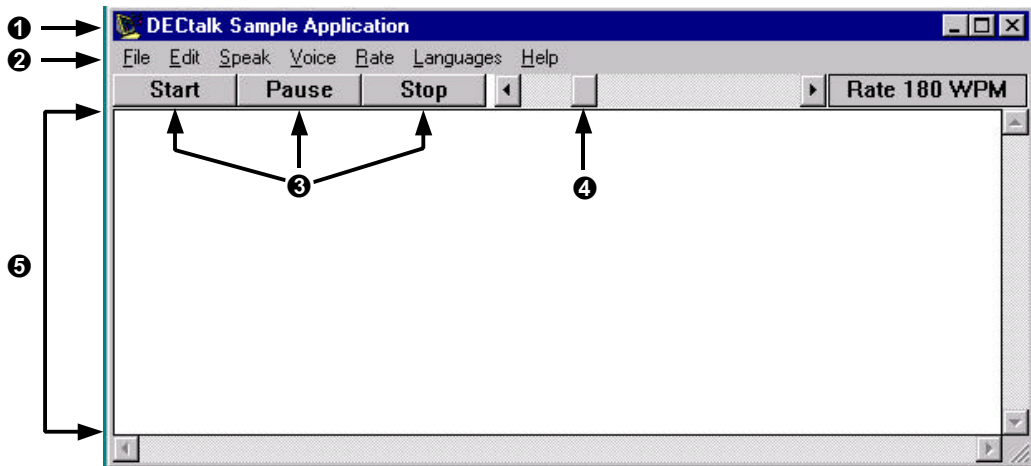
DECtalk Software components include:

- Sample and Speak program applets (`dt-sample.exe` and `dt-speak.exe`)
- A command-line program that speaks text (`say.exe`)
- Programming aids, including the API, voice-control commands, and the User-Dictionary Build Tool
- Text-to-Speech Services including the Dynamic Data Exchange (DDE) Text-to-Speech server.
- Sample code for the Sample program applet, the command line program (`say.exe`), and a speech-to-memory sample program.

Sample Program Applet

The Sample program applet and components are provided to give you some ideas on how to get started with your application. Both the graphic user interface and source components used to develop that user interface are included as part of the Sample program. See Figure 1-1 for a visual overview of the DECtalk Sample Application dialog. See *Using the Program Applets to Learn DECtalk Software Basics* for additional description of the Sample program. Note that available languages not installed with DECtalk Software are grayed out on the Languages menu. Languages shown in dark lettering are installed and ready to be used.

Figure 1-1 Visual Overview of the Sample Program Applet



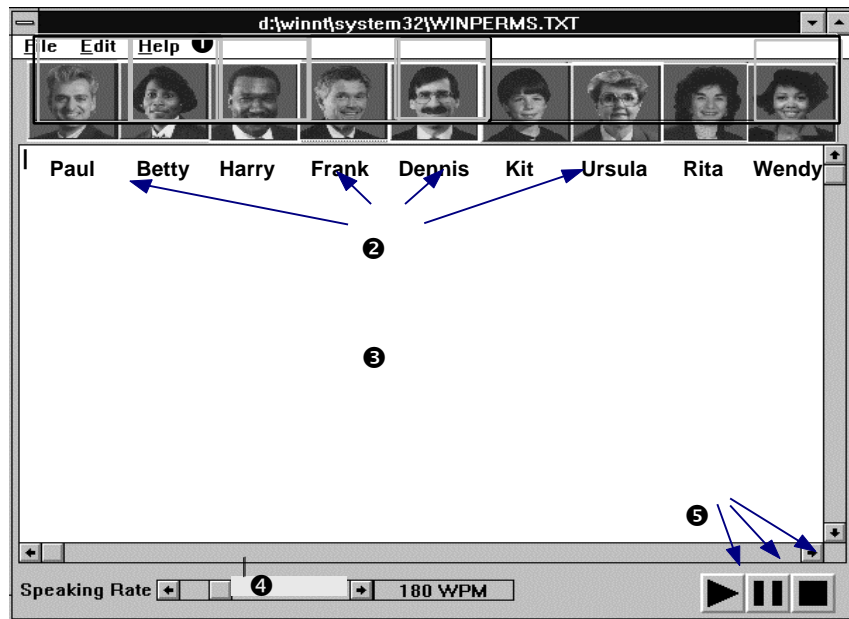
Legend

- ❶ Dialog
- ❷ Menu bar: File, Edit, Speak, Voice, Rate, Languages, and Help menus
- ❸ Start, pause, and stop push buttons
- ❹ Speech speed-control slider
- ❺ Edit window for text input

Speak Program Applet

The Speak program applet is included as a practical example of how the DECTalk Software API can be used to produce an innovative Text-To-Speech application that maximizes user interaction through a highly graphical interface. Figure 1-2 shows a visual overview of the Speak program applet.

Figure 1-2 Visual Overview of the Speak Program Applet



Legend

- | | |
|--|---------------------------------------|
| ❶ Menu bar: File, Edit, and Help menus | ❹ Speech speed-control slider |
| ❷ Voice-activation buttons | ❺ Start, pause, and stop push buttons |
| ❸ Edit window for text input | |

* Note that the faces become cartoon characters when using VGA 16-color mode.

Text-to-Speech DDE Server

The Text-to-Speech Dynamic Data Exchange (DDE) server makes it possible for any Windows application that can call DDE and that contains ASCII text to speak that text through DECTalk Software. The server is launched automatically whenever you start Microsoft Mail or manually whenever you click on the Text-to-Speech server icon in the DECTalk Software program group.

Programming Aids

The DECTalk Software programming aids include the application programming interface (API), in-line commands, and the User Dictionary Build Tool. Each component is introduced in this section and explained in detail in Chapter 3.

DECTalk Software APIs

DECTalk Software contains two APIs: the DECTalk Software API (DAPI) and the Microsoft Speech API (SAPI). The DECTalk Software documentation set describes the DAPI interface. See Chapter 4 in the *DECTalk Software Reference Guide* for a list of supported SAPI functions. Refer to Microsoft documentation and/or the Microsoft web site for information about SAPI.

The Text-To-Speech API is a custom extension to the Multimedia PC (MPC) API specified by the Windows operating system.

The API function set gives you a flexible method of using and controlling DECTalk Software functionality from within your application. These functions perform a wide range of tasks associated with the Text-To-Speech system. See Chapter 1 in the *DECTalk Software Reference Guide* for the complete list of API functions.

DECTalk Software In-Line Commands

DECTalk Software includes in-line commands that control voice characteristics. You can use these commands to perform simple voice-control operations, such as changing the speaking rate or speaking voice while DECTalk Software is speaking. In-line commands can be inserted into the text entered into the edit window or box available in most applications supplied with DECTalk Software. In-line commands also can be included in data buffers passed to the DECTalk Software

Dynamic Link Libraries (DLLs) by way of various TextToSpeech...() API calls. For more information, see the *DECtalk Software Reference Guide*.

DECtalk Software also has a more complex set of voice-control commands to modify the characteristics of each voice, control intonation and stress within written text, or create special effects, such as singing.

In-line commands have special syntax rules and components that you need to use when you insert them into files. A few simple commands and command components are illustrated in Figure 1-3. Refer to the *DECtalk Software Reference Guide* and online help for more information on voice-control in-line commands.

Figure 1-3 In-Line Command Components

- ❶ `[:rate 150]Hello. How are you?`
- ❷ `[:rate 150][:nb]Hello. How are you?`
- ❸ `Now I'm [:rate 150][:nb][r ' iyl iy] thrilled!`

Legend

- ❶ In-line commands are inserted into ASCII text files, begin with a colon, and are always inserted between brackets. (The command here tells DECTalk Software to speak this line at 150 words per minute.) Most commands have parameters (For example, `: rate 150` = rate of 150 words per minute.)
- ❷ Two or more commands can be inserted after each other by enclosing each command within a set of square brackets. (For example, the *rate* and *voice* selections are shown here.)
- ❸ Phonetic spellings of words can be included also. Phonetic spellings are enclosed within a set of square brackets. (For example, `[r ' iyl iy]` for *really*.) Note: if you want to use phonetic spellings, you must use the **[:phoneme arpabet speak on]** command to turn on recognition of phonetic spellings.)

DECtalk Software Dictionaries

DECtalk Software has two pronunciation dictionaries — a large internal (built-in) dictionary and a user-defined dictionary. With the large built-in dictionary, you can easily use many proper names and normally unpronounceable sequences, such as uppercase initials, in applications. With the user dictionary build tool, you can load application-specific words, or cultural or language-specific terms into the user dictionary. A sample user-dictionary file is installed with the software.

Default Locations for Dictionaries

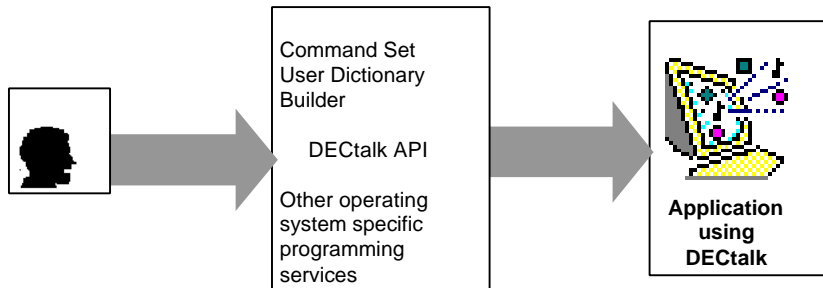
The location of pronunciation dictionaries is determined by the following:

- If your text-to-speech engine is a dynamic engine, which uses DLLs, or a static engine, which uses only LIBs, the default locations of the main and user dictionaries are defined in registry entries, as presented in *Chapter 3*.
- If your text-to-speech engine runs on UNIX, the locations of the dictionaries are given in `dtuser.lib`.

Using the Components

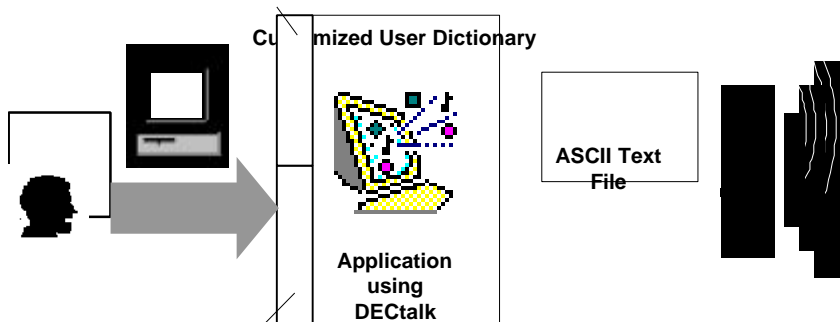
DECTalk Software applications and application-building components are intended for two specific audiences: the application programmer and the general user of text-to-speech applications developed with the DECTalk Software API.

Application Programmer



As a DECTalk Software application programmer, you can use the DECTalk Software programming aids and API components to create applications that use DECTalk Software. These applications can incorporate text files and use DECTalk Software in-line commands as permanent parts of the application.

General User



Abbreviated Command Set

The general user converts ASCII text files to speech by using an application that incorporates DECTalk Software. By using an abbreviated set of DECTalk Software in-line commands and the user-defined dictionary, the general user can

fine-tune the basic pronunciation and voice characteristics defined in the application.

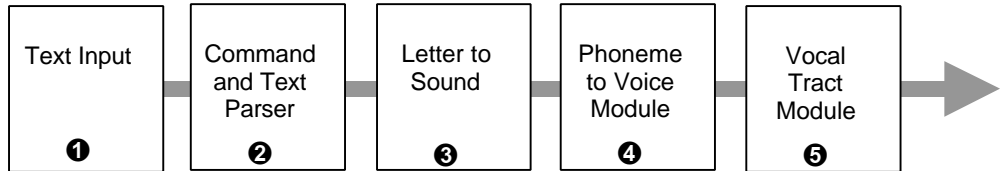
How It Works

DEctalk Software converts ASCII text into speech output through a speech synthesizer. The two ways to feed text into the speech synthesizer are:

- Through the DEctalk sample application user interface
- By way of programming calls in your own application program using the DEctalk Software API

The flow of the text-to-speech process is shown in Figure 1-4.

Figure 1-4 Flow of the DEctalk Software Text-To-Speech Conversion Process



Legend

- ① Text is selected for processing by DEctalk Software.
- ② A sentence parser breaks the input stream into separate words and locates some clause boundaries (indicated by commas and other punctuation marks as well as by special words loaded in the DEctalk Software internal dictionary). The sentence parser also recognizes and deals with phonemic symbols and commands that you might have added to the input text.
A word parser breaks words into their component parts, dividing words into their final pronounceable forms. Strings of text that do not form pronounceable words are spelled out letter by letter. A number formatter is used if the text contains numerals. The number formatter applies the rules for many common number formats and converts the numbers into words.
- ③ A dictionary lookup routine searches the pronunciation dictionaries. DEctalk Software has a built-in dictionary of many commonly used words. DEctalk Software also has a user dictionary for programmers and general users that can be filled with words specific to an application. This dictionary and how to load it are described in Chapter 3.
A letter-to-sound module uses a set of pronunciation rules to assign phonemic form and lexical stress patterns to words not found in the dictionary. See Chapter 3 for more information on modifying the phonemic form of words, and *the DEctalk Software Reference Guide* for enhancing special voice qualities, such as emphasis and singing.

Legend

- ④ A phrase structure module recombines all phonemic output from the dictionary search and other modules. Duration of phonemes and pitch commands is computed for the clause, and appropriate sound variants are selected for those phonemes that can be pronounced in more than one way.

The phoneme-to-voice module processes clauses passed from the phrase structure module and converts them to control signals for the speech synthesizer. This module modifies the clauses by changing the phonemes/allophones into parameters that determine the natural resonant frequencies of the vocal tract (formants), and sound source amplitudes. The control parameters are sent to the speech synthesizer for output.

- ⑤ The DECtalk speech synthesizer computes a speech waveform with acoustic characteristics that are determined by the synthesizer control commands.

Chapter 2 — Using the Program Applets to Learn DECtalk Software Basics

This chapter introduces the basic operations involved in DECTalk Software voice and program control. If you are a general user, this chapter gives you the information you need to use the Sample, Speak, and User Dictionary Build Tool program applets. If you are an application programmer and not familiar with DECTalk Software, this chapter introduces you to the basic voice and program control functions used to control DECTalk Software from within an application program. Topics include:

- Starting the sample applet and opening a text file
- Inserting DECTalk Software in-line commands
- Changing voice selections
- Editing a text file and changing the speaking rate
- Overview of the User Dictionary Build Tool
- Building a user dictionary
- Using the DECTalk Software Speak applet
- Running DECTalk Software from other applications
- Using the Say command-line applet

Starting the Sample Applet and Opening a Text File

The fastest way to start learning about DECtalk Software is by using the Sample program applet to convert an ASCII text file to speech. After you start the program applet and speak a text file, you can then learn more about controlling voice characteristics through DECtalk Software in-line commands and the user dictionary, which are covered later in this chapter.

Figure 2-1 Starting the Sample Applet and Opening a Text File

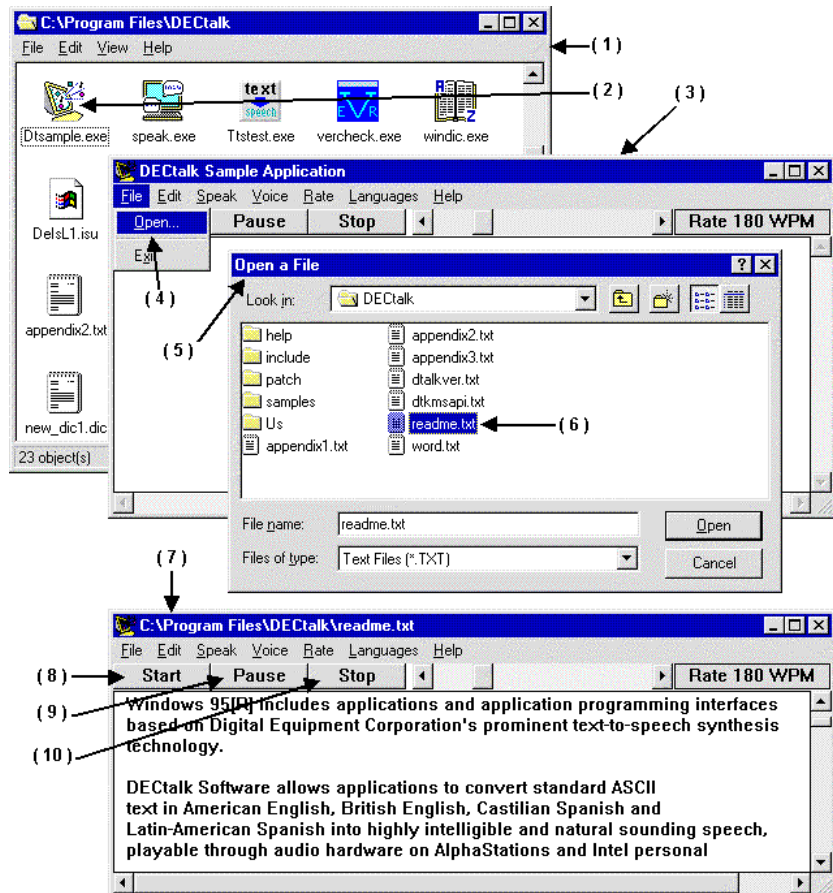


Table 2-1 Starting the Sample Applet and Opening a Text File

Task/Location	Action	Result
<i>Speaking a File using the Sample Applet</i>		
DECTalk Software program group (1)	Step 1. Double click the Sample applet icon (2)	The Sample applet dialog is displayed. (3)
	Step 2. Pull down the Language menu and select the language of your choice.	
	Step 3. Pull down the File menu and select Open. (4)	The Open a File dialog box is displayed. (5)
Open File dialog box (5)	Step 4. Select the file you want DECTalk Software to speak. (6)	The file is displayed in the Sample applet dialog. (7)
Start button (8)	Step 5. Click the start button.	DECTalk Software starts speaking the file.
Pause and stop buttons (9) (10)	Step 6. Click the Pause or Stop button as needed.	DECTalk Software pauses or stops the speaking session.
<i>Speaking a File using Drag and Drop</i>		
File manager with text file name visible (not shown here)	Step 1. Click the file name, and drag to sample applet dialog or to the minimized DECTalk Software icon.	The file is spoken.

Inserting DECtalk Software In-Line Commands (Syntax Rules)

Before you can use DECtalk Software in-line commands to modify speech output, you need to know the proper syntax with which to include those commands into a text file. Figure 2-2 illustrates the rules of DECtalk Software in-line command syntax. For complete details about DECtalk Software in-line commands, see the *DECtalk Software Reference Guide*.

Figure 2-2 Rules for DECtalk Software In-Line Command Syntax

- ❶ `[[:rate 150][:name Betty]Hello. How are you?`
- ❷ `[[:rate 150][:np]Hello. How are you?`
- ❸ `[[:dv ap 160 pr 50 save][:nv]Hi.`
- ❹ `[[:dv]ap 160 pr 50 save][:nv]Hi.`
- ❺ `[[:dv ap 160 pr 50 save][:nv]Hi.`
- ❻ `[[:nb][:np]Hello.`
- ❼ `Now I'm [[:dv ap 90 pr 130][r ` iyl iyl]thrilled.`

Legend

- ❶ Enclose every command within brackets.
- ❷ Some commands provide an alternate form to simplify input. Here the `:name` command and its argument `Betty` can be replaced by the alternate command `:np`.
- ❸ Begin every command with a colon.
- ❹ Separate each command name and its option or parameter from the command name text by a valid word boundary marker. The valid word boundary markers are a space and a tab. A space is used here.

Legend

- ⑤ Include several options and parameters within the same brackets if the command allows more than one option and parameter. In this example, the option and parameter grouping modifies the **[:dv]** command.
- ⑥ If you give two conflicting commands, DECTalk Software uses the last command in the sequence. In this example, DECTalk Software uses Paul's voice.
- ⑦ If you enable phoneme interpretation by using the **[:phoneme arpabet speak on]** command, you can include phonetic spelling for text-to-speech synthesis. The phonetic spelling replaces the actual spelling and is enclosed within brackets. In this example, the phonetic spelling of the word *really* (r ' iyl iy) is included.

Additional Syntax Rules

Additional syntax rules follow:

- If the value in a **[:dv]** command is too low, DECTalk Software uses the minimum valid value. If the value is too high, it uses the maximum valid value.
- After you enter a command, that command applies to the remaining text until it is overridden by another command. For example, the command **[:nk]** invokes Kit's voice on all entered text until you enter another voice-selection command.
- Invalid commands are ignored. By setting the **[:error speak]** command, you can receive an *audible* warning that an invalid command has been entered.
- Do not put arpabet parameters within the brackets for another command.
- DECTalk Software interprets text between brackets as phonemes only after the **[:phoneme arpabet speak on]** command is sent to the application. If **[:phoneme arpabet speak on]** has not been sent, DECTalk Software interprets the brackets and characters between them literally. The **[:phoneme arpabet speak off]** command must be sent with literal characters if you want to insert brackets in normal text.
- If the command **[:phoneme arpabet speak on]** is set and you forget the right bracket (**]**), DECTalk Software attempts to interpret all text following the ASCII text as phonemes, skipping over illegal letter combinations. The resulting text sounds garbled. Enter a right bracket to fix this problem.

Changing the Speaking Voice

You can change a speaking voice by inserting DECtalk Software commands into the edit window of the Sample program applet dialog *or* by selecting text and then selecting a different name from the Voice pull-down menu in the Sample program applet dialog. Voice changes made with commands are permanent for the session and remain intact as long as the command remains in the file. Voice changes made from the menu remain in effect only as long as the current DECtalk Software session is running. Each voice selection is inserted into the command **[:nXX]**, where **XX** is a value representing one of the voices. Table 2-2 lists the names and their corresponding values. Figure 2-3 and Table 2-3 show steps you can make to change voices.

You can change voices with a command as shown in the following example.

```
[ :nb ] Hello. I'm Betty.
```

You can also change voices in the middle of a sentence.

```
[ :np ] This is a demo [ :nb ] of a sudden change in voice.
```

If a voice-change request occurs in the middle of a sentence, DECtalk Software automatically pauses. The pause is the equivalent of inserting a comma, or about half a second.

```
[ :np ] This is a demo, [ :nb ] of a sudden change in voice.
```

Table 2-2 DECtalk Voices and their Associated Values

Name	Value	Name	Value
Paul	P	Betty	B
Harry	H	Ursula	U
Frank	F	Wendy	W
Dennis	D	Rita	R
Kit	K		

Figure 2-3 Changing DECtalk Software Voices

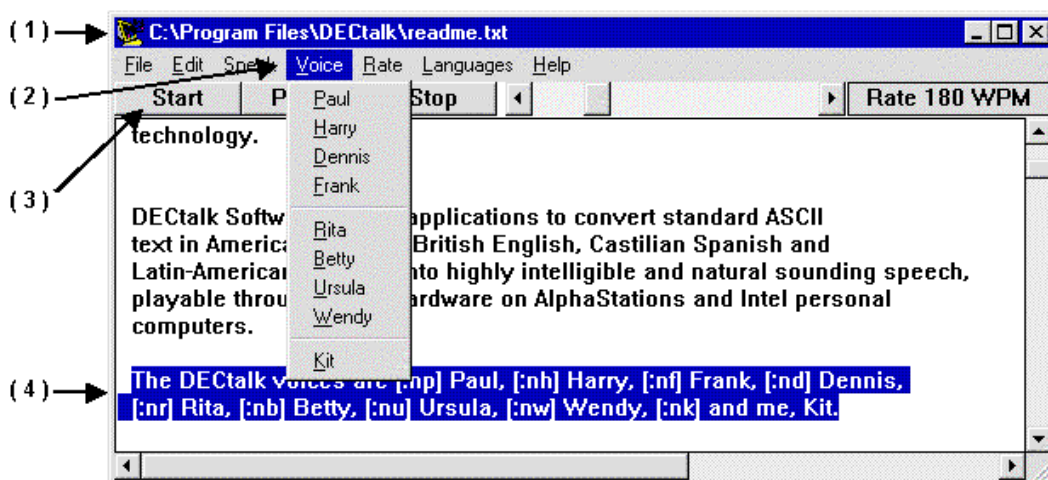


Table 2-3 Changing Voices

Task/Location	Action		Result
<i>Using the Voice menu</i>			
Sample applet dialog (1)	Step 1.	Select the desired speaking voice from the Voice menu. (2)	The entire file or selected section is spoken.
	Step 2.	Press the start button. (3)	
<i>Using DECTalk Software in-line commands</i>			
Sample applet dialog (1)	Step 1.	Insert commands in the text at the points where you want a new voice to take effect.(4)	DECTalk Software changes the speaking voice at the point where you insert commands.

Editing a Text File and Changing the Speaking Rate

DEctalk Software lets you edit text — select, cut, paste, append other text files — that is displayed in the Sample program applet window and then play segments or all of the edited text. Figure 2-4 and Table 2-4 show cutting and pasting, playing selected text, and changing the speaking rate. You can also increase and decrease the rate at which DEctalk Software speaks a file or a section of a file.

Figure 2-4 Editing a Text File and Changing the Speaking Rate

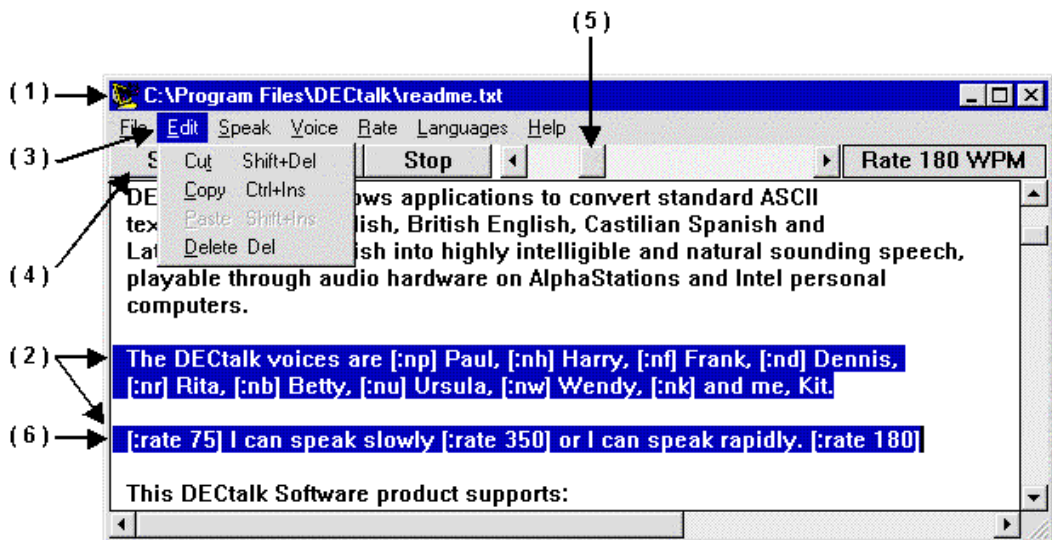


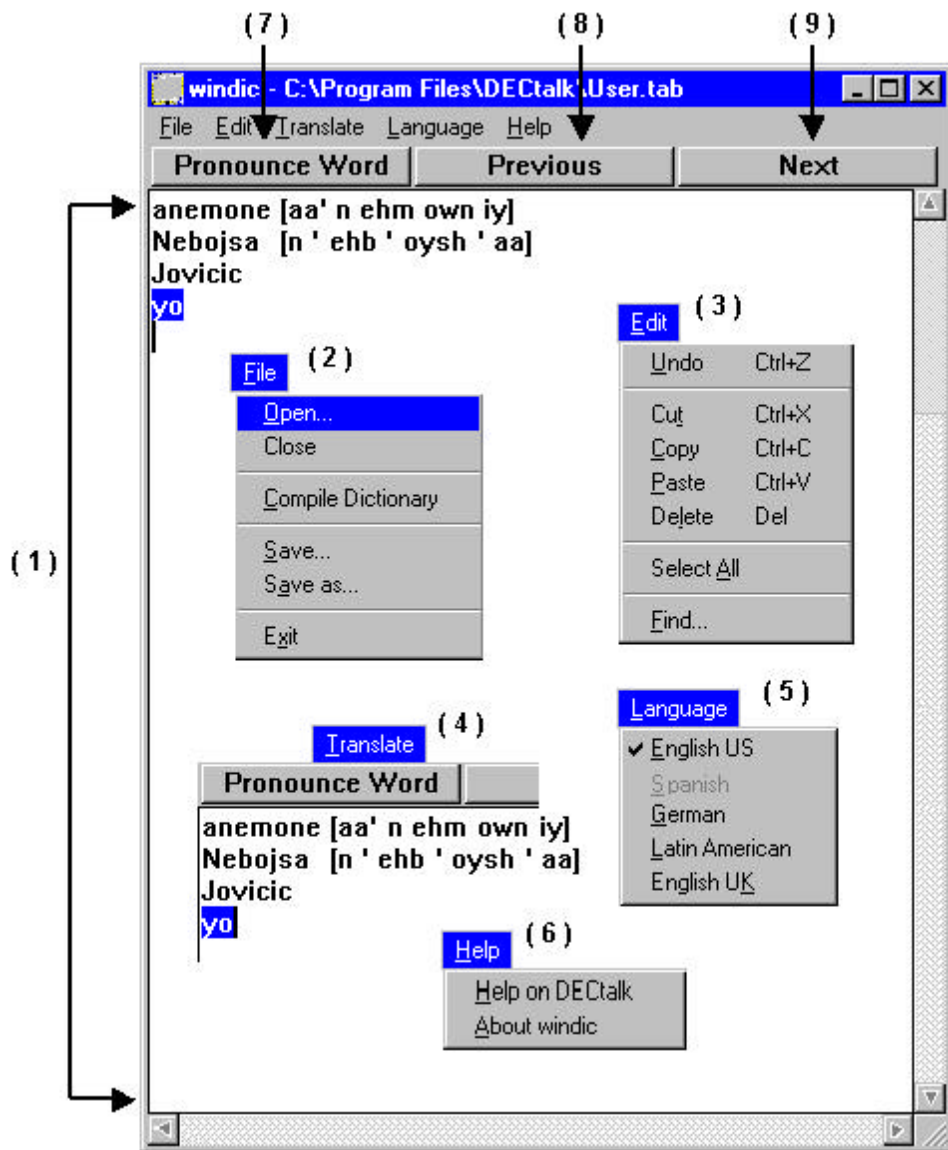
Table 2-4 Editing a Text File and Changing the Speaking Rate

Task/Location	Action	Result
<i>Editing the text</i>		
DECTalk Software Sample applet dialog (1)	Step 1.	Select the range of text you want to edit. (2)
	Step 2.	Use cut, copy, paste, and delete selections from the Edit pull-down menu (3) to manipulate the selected text. You can also insert text and DECTalk Software commands by placing the cursor anywhere in the text and typing.
	Step 3.	Click on the Start button. (4)
		DECTalk Software speaks the edited file in the new, edited format.
<i>Playing selected text</i>		
DECTalk Software Sample applet dialog (1)	Step 1.	Select the range of text you want to play. (2)
	Step 2.	Click on the right mouse (MB2 or 3) button.
		DECTalk speaks the selected text.
<i>Changing the speaking rate</i>		
Sample applet dialog as DECTalk Software is speaking a file (1)	Step 1.	Use the mouse to position the pointer on the rate slider bar. Press the left mouse (MB1) and drag the slider to the left and wait for the speaking voice change to occur. Then drag the slider to the right (5)
DECTalk Sample applet dialog. (1)	Step 2.	You can also insert DECTalk Software rate commands in the text. (6)
		The speed at which DECTalk Software speaks the file changes. It increases if you drag to the right and decreases if you drag to the left. The rate in words per minute is displayed to the right of the slider bar. Changes in the speaking rate occur only on a clause boundary after all the previously queued audio has played.
		When the text is played, DECTalk changes the rate according to the commands.

Overview of the User Dictionary Build Tool

The User Dictionary Build Tool creates a loadable dictionary file (.dic) from a list of words and their corresponding pronunciations, as shown in Figure 2-5 and the legend that follows it.

Figure 2-5 User Dictionary Build Tool



Legend

(1) ***Edit Window***

In the edit window, enter word-pronunciation pairs that are not predefined or not pronounced as desired in the DECtalk Software user dictionary. A word-pronunciation pair is a word, followed by its phonemic spelling enclosed in square brackets.

(2) ***File pull-down menu***

Open... A pop-up dialog box that opens up a dictionary definition file (*.tab).

Close Closes the dictionary definition file. If the entries in the edit window have been modified, it pops a dialog box asking if you wish to save changes.

Compile Dictionary Compiles the current file to a .dic file with the same name.

Save... A pop-up dialog box that saves the file and calls the compiler to create a dictionary file (*.dic).

Save as... A pop-up dialog box that lets the user rename the file. This also calls the compiler to create a dictionary file (*.dic).

Exit Exits the program, and if the entries in the edit window have been modified, it pops a dialog box asking if you wish to save changes.

(3) ***Edit pull-down menu***

Undo Undo the previous command.

Cut Cut the selected region.

Copy Copy the selected region.

Paste Paste the selected region.

Delete Delete the selected region.

Select All Select all of the word-pronunciation pairs from the edit window.

Find... A pop-up dialog box that prompts you to search for selected text.

(4) ***Translate menu***

Translates selected text into phonemic spelling.

(5) ***Language pull-down menu***

Lists the DECtalk languages. Uninstalled languages are grayed out.

(6) ***Help pull-down menu***

Selects the online help.

(7) ***Pronounce Word button***

When clicked, the selected text in the edit window is spoken. If a word-pronunciation pair is selected, the phonemic pronunciation is used. If only the word is selected, the currently stored pronunciation is used.

(8) ***Previous button***

When clicked, the previous word-pronunciation pair in the list is spoken.

(9) ***Next button***

When clicked, the next word-pronunciation pair in the list is spoken.

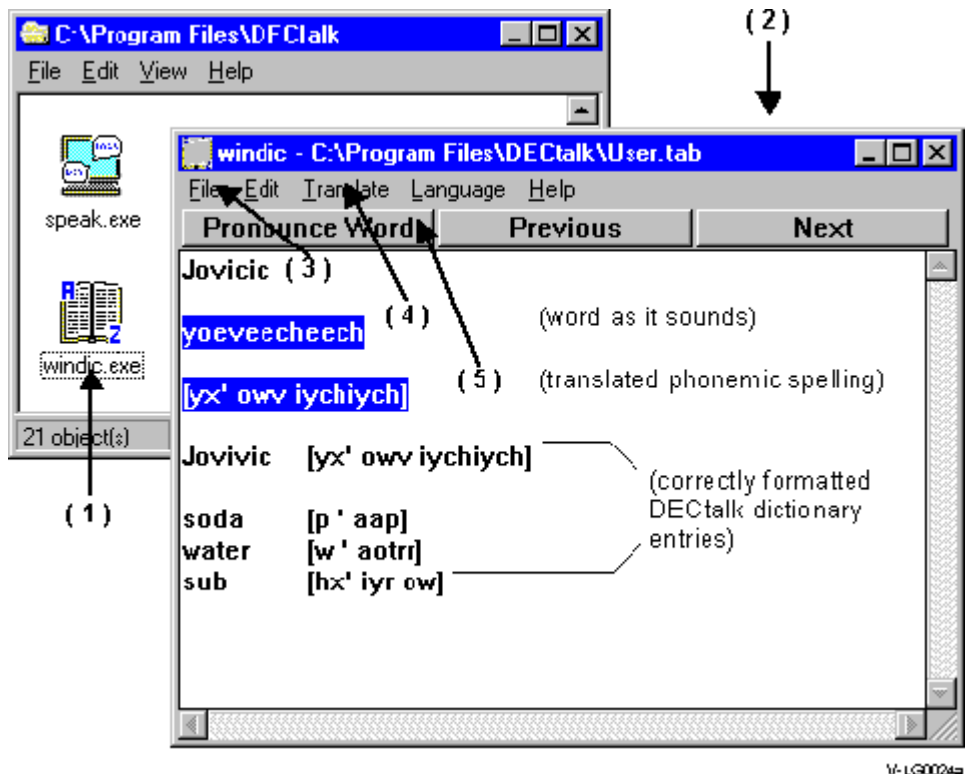
The dictionary is loaded with a call to the TextToSpeechLoadUserDictionary API call or from the File menu in the Speak program applet.

Use the Translate command to create phonemic translations of words or phrases.

Building a User Dictionary

Building a user dictionary is a two-step process. First you create a .tab source file with the User Dictionary Build Tool to define the pronunciation of special words you want to place in the dictionary, as shown in Figure 2-6 and Table 2-5.

Figure 2-6 Building a User Dictionary



V-LG0024a

Table 2-5 Building a User Dictionary

Task/Location	Action	Result
<i>Creating or modifying dictionary entries</i>		
DECTalk Software (1) program group	Step 1. Double click on the User Dictionary icon.	The DECTalk Software Dictionary Builder dialog is displayed. (2)
File pull-down menu (3)	Step 2. Select Open to open an existing dictionary definition (.tab) file. You can also create a new dictionary definition file by entering words directly.	The Open a File dialog box is displayed (not shown). The file you select is displayed in the edit window.
Edit window	Step 3. Enter words that are not predefined or pronounced as desired in the DECTalk user dictionary. DECTalk needs to know both the word and the phonemic spelling you want to associate with it. If you know the phonemic spelling, enter it using the following format: word[phonemic spelling] If you do not know the phonemic spelling, enter the word as it sounds, rather than as it is spelled.	
	Step 4. Select the word and click Translate. (4) For example, the Yugoslavian name Jovicic sounds like Yoeveecheech	The User Dictionary Build Tool converts what you entered into a phonemic spelling. The User Dictionary Build Tool converts the name to: [yx' owv iychiych]
	Step 5. To hear how DECTalk interprets the phonemic spelling, select it, and click Pronounce Word. (5).	DECTalk speaks the word.
	Step 6. Besides pronunciation, you can also define word usage. For example, to define the word <i>soda</i> to be equivalent to <i>pop</i> ; define <i>water</i> to be pronounced with a New England accent; and to take into account the dialectic regional preferences so that the word <i>sub</i> is called a <i>hero</i> , you would use the following pronunciation pairs: Soda [p ' aap] water [w ' aot rr] sub [hx' iyr ow] Refer to the <i>DECTalk Software Reference Guide</i> or online help (the Reference Tables) for a complete list of phonemic, stress, and syntactic symbols. Both of these sources provide more information on modifying and enhancing pronunciation.	

After you have created the .tab source file, you compile it to produce a .dic file as shown in Figure 2-7 and Table 2-6. This file can be loaded into a DECTalk Software session through the Speak applet or an API call.

Figure 2-7 Saving and Compiling the Dictionary

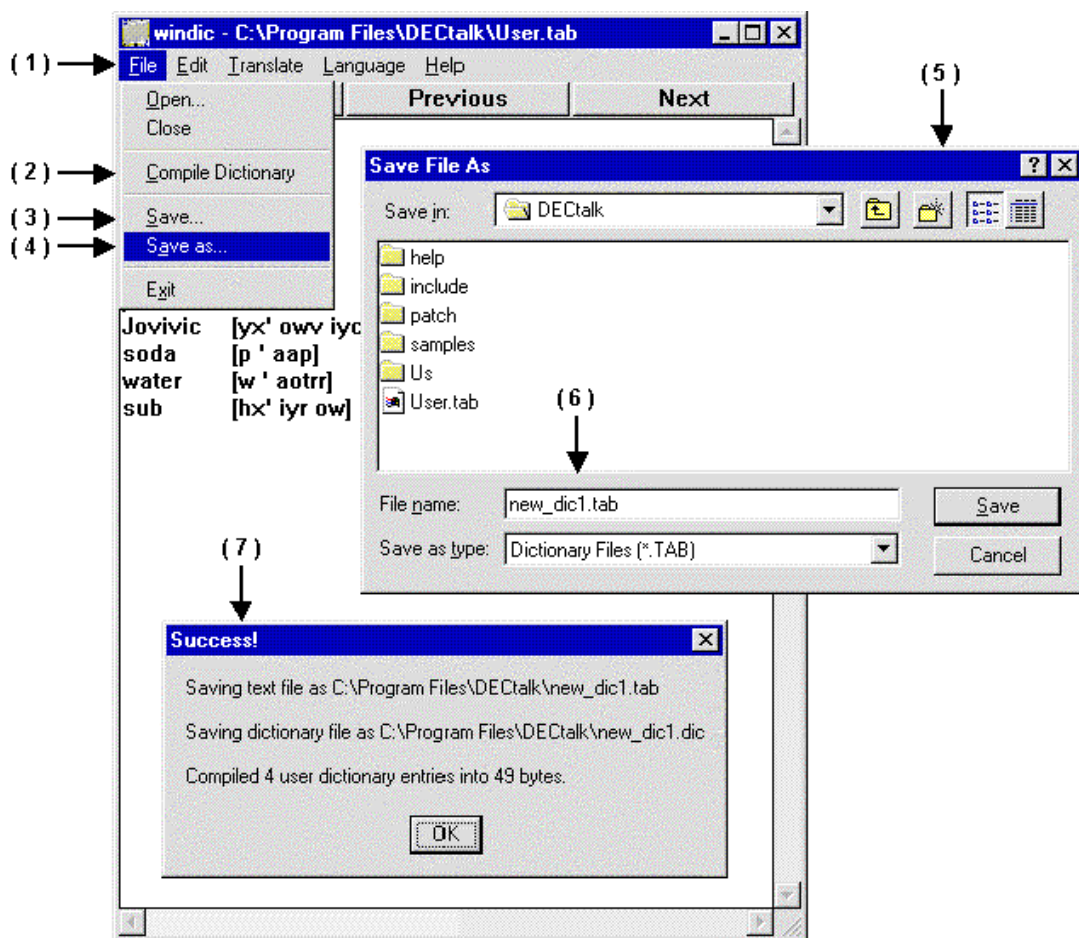


Table 2-6 Saving and Compiling the Dictionary

Task/Location	Action	Result
<i>Saving and compiling a new dictionary</i>		
File pull-down menu (1)	Step 1. Display the file menu. If you have not yet given your file a name, choose one of the following: Compile Dictionary (2) Save (3) Save As... (4)	The Save dialog box is displayed in all three cases. (5)
Save as dialog box	Step 2. Navigate to the location where you want to save the dictionary session and enter a file name. (6)	A success message (7) is displayed, indicating that both the text file (in .tab format) and a dictionary file (in .dic format) have been saved.
<i>Saving and compiling an existing dictionary</i>		
File pull-down menu (1)	Step 1. Choose Open from the File menu to open an existing file.	The Open a File dialog box is displayed (not shown). The dictionary file (.tab file type) you choose is displayed in the text-collection area.
File pull-down menu (1)	Step 2. Edit the file as described in Table 2-5.	
File pull-down menu (1)	Step 3. To save the changes you have made to the .tab file without compiling the dictionary, pull down the File menu (1) and click Save (3).	The changes you have made are saved.
File pull-down menu (1)	Step 4. To save your changes and compile the dictionary, pull down the File menu (1) and click Compile Dictionary. (2)	A success message (7) is displayed and indicates that both the text file (in .tab format) and a dictionary file (in .dic format) have been saved.

Using the DECTalk Software Speak Applet

The Speak program applet demonstrates the DECTalk Software voice set, as shown in Figure 2-8 and Table 2-7. Each picture* displayed in the Speak dialog represents one of the nine built-in voices. You can select a specific voice by clicking the picture. DECTalk Software then uses the selected voice to speak the contents of a text file displayed in the edit window or from a file you drag and drop from the Windows File Manager into the edit window of the Speak dialog.

* Note that the faces are cartoon characters when using VGA 16-color mode.

Figure 2-8 Using the DECTalk Software Speak Applet

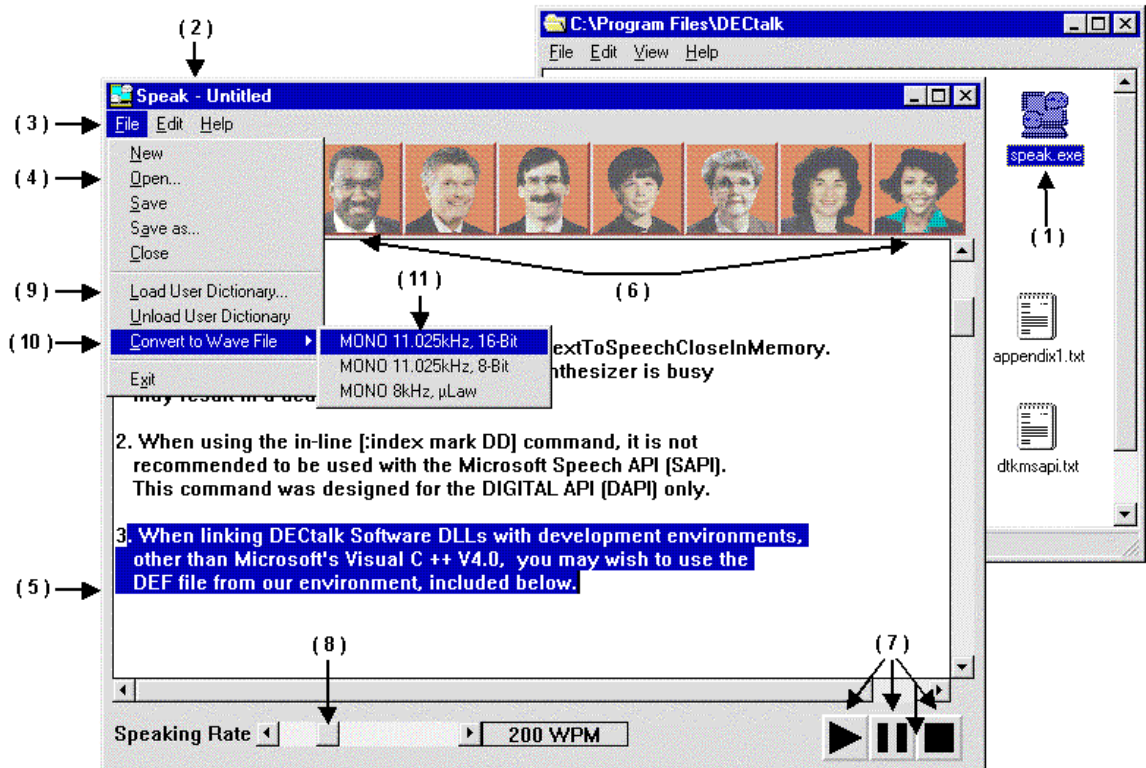
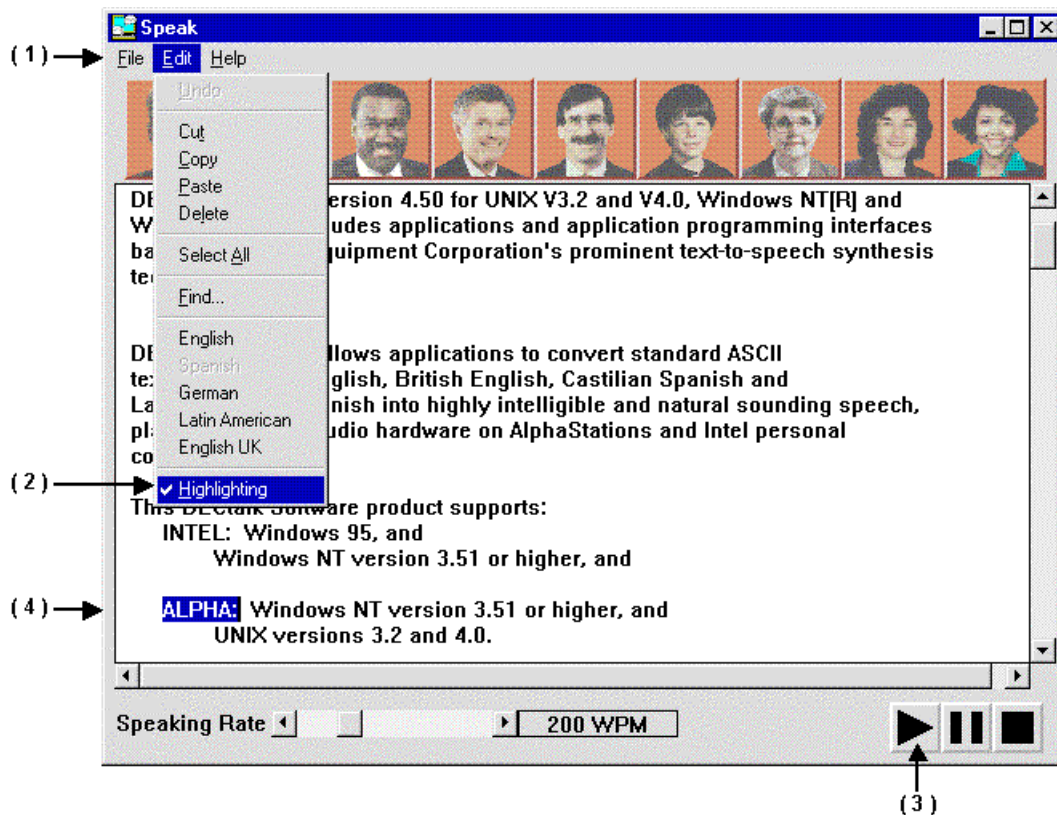


Table 2-7 Using the DECtalk Speak Application

Task/Location	Action		Result
<i>Editing a text file and playing selected segments</i>			
DECtalk program group (1)	Step 1.	Double-click on the Speak icon.	The Speak applet dialog (2) displays.
File pull-down menu (3)	Step 2.	Choose open (4) to choose a text file, or enter text in the edit window.	The Open A File dialog box displays (not shown). The file you choose is displayed in the edit window
Speak applet dialog (2)	Step 3.	Select the range of text you want to edit or play. (5)	
	Step 4.	Use the Cut, Paste, and Insert keys or corresponding commands from the Edit menu to manipulate the selected text. For example, cut and paste a single sentence for DECTalk Software to speak.	
	Step 5.	Click the face of the voice you want to speak. (6)	The edited file is spoken.
Edit menu	Step 6.	Use the (MB2 or 3) right mouse button to speak a selected region or press the Play, Pause, and Stop buttons (7) to play the whole file.	
<i>Changing the speaking rate</i>			
Speak applet dialog while DECTalk Software is speaking a file	Step 1.	Use the mouse to position the pointer on the rate slider button. (8) Press MB1 and drag the slider to the left and wait for the speaking rate to slow. Then move the slider to the right to increase the rate.	The rate in words per minute displays to the right of the slider bar. Rate changes occur only at a clause boundary and only after all previously queued audio has played.
<i>Loading a User Dictionary</i>			
File pull-down menu (3)	Step 1.	Select Load User Dictionary. (9) Note that the current User Dictionary is defined in the dectalk.ini file and is loaded if available.	The Load Dictionary dialog box (not shown here) is displayed.
	Step 2.	Select the User Dictionary you want to load, and press Enter or click on OK.	That dictionary is loaded and remains in effect until you change the dictionary or end the session.
<i>Saving as a .WAV file</i>			
File pull-down menu (3)	Step 1.	Pull down the File menu, select Convert to Wave File. (10) Select the desired format. (11) Select a file name for the audio file.	The Convert to Wave File dialog box is displayed (not shown here). The text file is saved to the selected file as a standard window .wav file.

Figure 2-9 shows how to highlight a selection of text for speaking.

Figure 2-9 Highlighting Spoken Text



Task/Location	Action	Result
<i>Highlighting Spoken Text</i>		
Speak applet dialog , Edit pull-down menu (1)	1. Click Highlighting. (2)	The Highlighting option is checked.
Speak applet controls.	2. Click the Start button. (3)	As DECtalk speaks the text, each word is highlighted. (4)

Running DECtalk Software from Other Applications

You can run DECtalk Software by way of the Text-To-Speech Dynamic Data Exchange (DDE) server from any application that supports DDE. When run from such applications, you can have DECtalk speak any selected text associated with the application. For example, DECtalk can be “plugged into” Microsoft Word and then used as a proofing tool to read entire files or selected sections from those files.

The following section is an example of how to set up and then run DECtalk Software from within a Microsoft Word document. The steps include:

- 1) Creating a Word macro and associating it with a file or document template (for Word 6.0)
- 2) Associating the macro with a button, menu selection, or hot key
- 3) Launching the DECtalk Text-to-speech (TTS) Server and speaking the text
- 4) Speaking the text from within the document

Step 1 — Creating a Word Macro and Associating it with a File or Document Template (for Word 7.0)

The first step in running DECTalk Software from a Microsoft Word document is creating the Word macro that links Word and DECTalk through DDE, as shown in Figure 2-10 and Table 2-8. You have to create this macro only once and associate it with a button, hot key, or menu command. If you make the macro part of a permanent .dot (template) file, DECTalk Software always is available when you edit a document associated with that template.

Figure 2-10 Creating a Word Macro

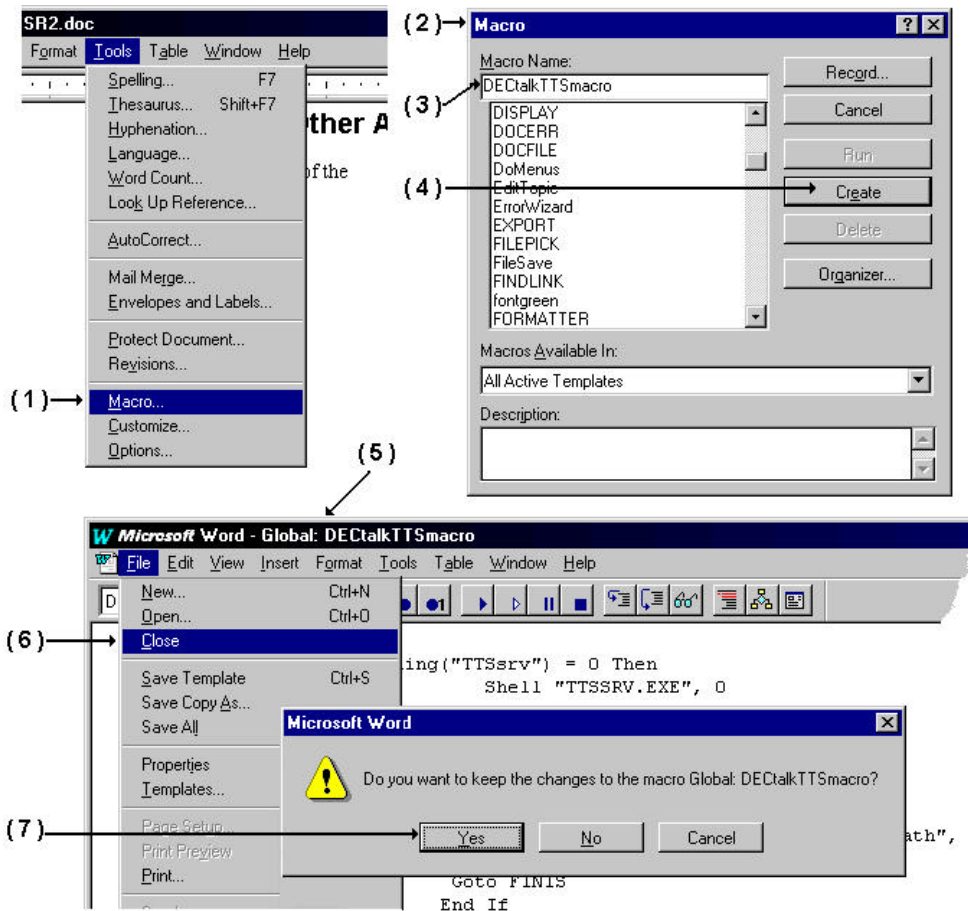


Table 2-8 Creating a Word Macro

Task/Location		Action	Result
Word dialog	Step 1.	Select Macro from the Tools Menu. (1)	The Macro dialog box is displayed. (2)
Macro dialog box (2)	Step 2.	Enter the name of the macro you are going to create. (3)	
Macro dialog box (2)	Step 3.	Click the Create button. (4)	The Macro creation window is displayed. (5)
Macro creation window (5)	Step 4.	Insert the following macro: (Note: you can open the <i>word.txt</i> file located in the \DECTALK\ directory, copy it, and paste it into the Word macro.) Sub MAIN If AppIsRunning("TTSSrv") = 0 Then Shell "TTSSRV.EXE", 0 rightNow = Now() diffTime = 0 Print "Starting DECTalk Server" WaitCursor 1 While diffTime < 0.00003 diffTime = Now() - rightNow Wend WaitCursor 0 Print " " If AppIsRunning("TTSSrv") = 0 Then MsgBox("Cannot find TTSSRV.EXE in the path", "Speak", 0) Goto FINIS End If End If channel = DDEInitiate("TTSServer", "Speak") If channel = 0 Then MsgBox("Unable to connect to TTSSRV.EXE", "Speak", 0) Goto FINIS Else DDEPoke channel, "Speak", Selection\$() DDETerminate channel FINIS: End Sub	

Task/Location	Action	Result
File pull-down menu.	Step 5. On the File menu, click Close (6). Click Yes (7) when you are asked if you want to keep changes to the macro.	The macro is created.

Step 2 — Associating the Macro with a Toolbar Button

After you create a macro to run DECtalk from within a Microsoft Word document (step 1), you can associate the macro with a button on a toolbar as shown in Figure 2-11 and Table 2-9. You can also associate the macro with a menu selection from one of the pull-down menus or with a power-key combination from the keyboard. This section illustrates how to link the macro with a button on a toolbar.

Figure 2-11 Associating the Macro with a Toolbar Button

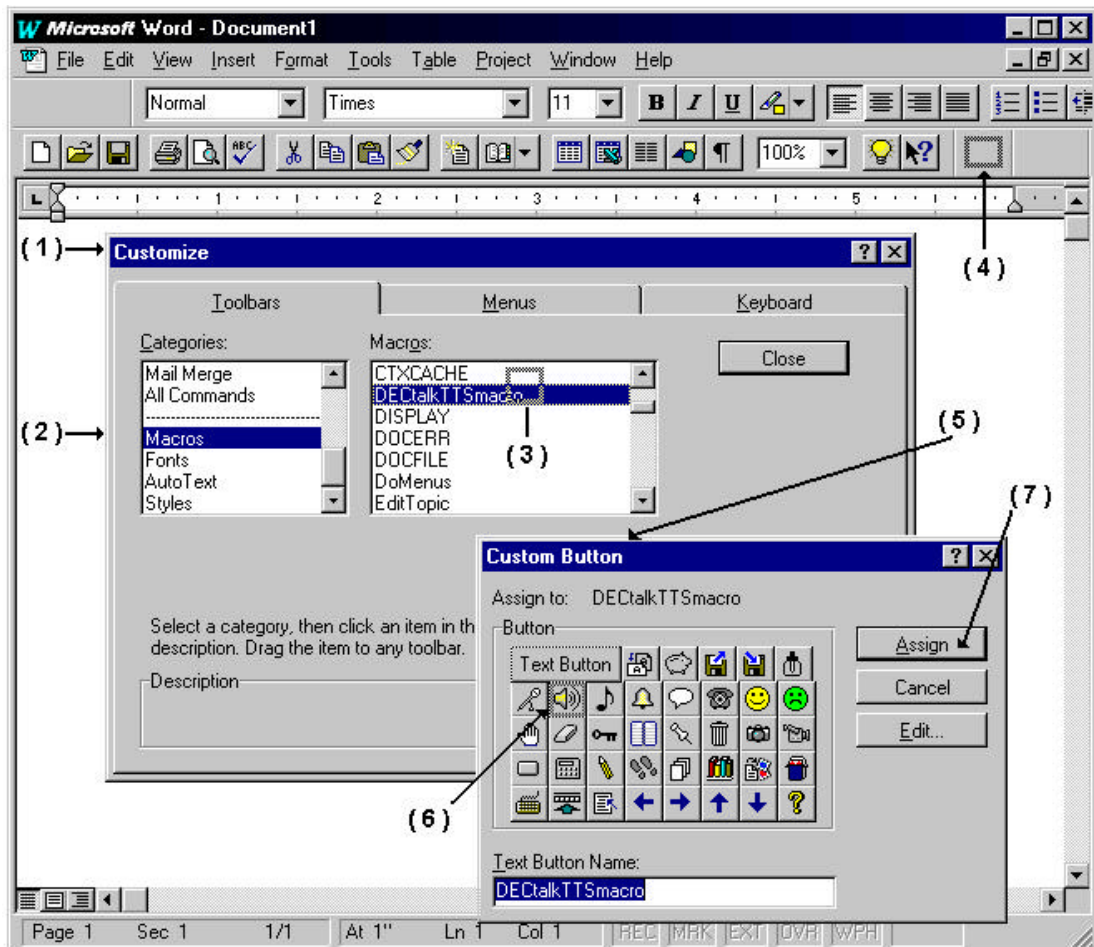


Table 2-9 Associating the Macro with a Toolbar Button

Task/Location		Action	Result
Word dialog Tools menu	Step 1.	Select Customize.	The Customize dialog box is displayed. (1)
Customize dialog box.	Step 2.	Select the Toolbars tab and click on Macros (2).	
	Step 3.	Locate the macro you created and click the name. (3)	
	Step 4.	Place the cursor (arrow) on the macro name, press and hold MB1 and drag the cursor to the toolbar in which you want the DECtalk macro placed. (4)	
Word toolbar you select.	Step 5.	An outlined box appears where Word will place the new button. (4)	The Custom Button box is displayed. (5)
Custom button dialog box (5)	Step 6.	Click the button you want to associate with the DECtalk macro. (6)	The button is outlined.
	Step 7.	Click Assign. (7)	The new button now appears in the gray outlined box in the toolbar.

Step 3 — Launching and Configuring the DECTalk Software Text-to-Speech Server

After you associate the DECTalk macro with a button (step 2), you must have the text-to-speech (TTS) server running before DECTalk can speak selected sections of text from an application, as shown in Figure 2-12 and Table 2-10. This section outlines how to start the TTS server and configure the TTS server for speaker selection, User Dictionary selection, and speaking rate.

The TTS server is launched by the Word macro and is displayed as a small window. You can control the speaking voice and speaking rate from the window pull-down menu.

Applications can access the TTS DDE server using the service name “TTSserver.” The service topic names are “Speak,” “LoadDictionary,” and “UnloadDictionary.” Each of these topics requires a string that is either text to be spoken (for topic “Speak”) or a dictionary file string.

Figure 2-12 Launching and Configuring the DECTalk Server

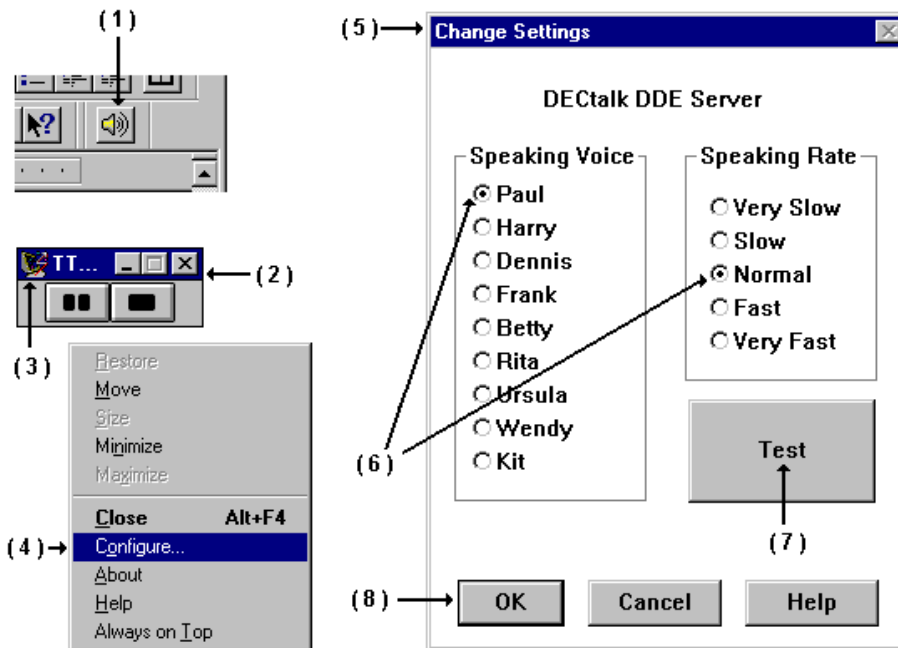


Table 2-10 Launching and Configuring the DECtalk TTS Server

Task/Location		Action	Result
Microsoft Word editing session	Step 1.	Click the TTS Server icon (1) you created when you associated your Word macro with a toolbar button. (See Table 2-9 Associating the Macro with a Toolbar Button	The TTS Server dialog is displayed. (2)
TTS Server dialog (2)	Step 2.	Pull down the Window menu (3) and select Configure... (4)	The Change Settings dialog box is displayed. (5)
Change Settings dialog box (5)	Step 3.	Click the desired speaking voice and speaking rate. (6)	
	Step 4.	Click on the Test button (7) to preview your selections.	
	Step 5.	Adjust the settings until you produce the desired result.	
	Step 6.	Click on OK. (8)	
			The selected settings remain in effect as the default settings until they are changed. Note: in-line commands in selected text played through the TTS server will override the defaults.

Step 4 — Speaking Text in a Microsoft Word .doc File with the DECTalk TTS Server

Once the TTS server is launched by the word macro and you configure it for the desired speaking voice, speaking rate, and with a user dictionary file (step 3), you can have DECTalk speak selected sections of text from an opened file, as shown in Figure 2-13 and Table 2-11.

Figure 2-13 Speaking Text in a Microsoft Word .doc File with the DECTalk Software TTS Server

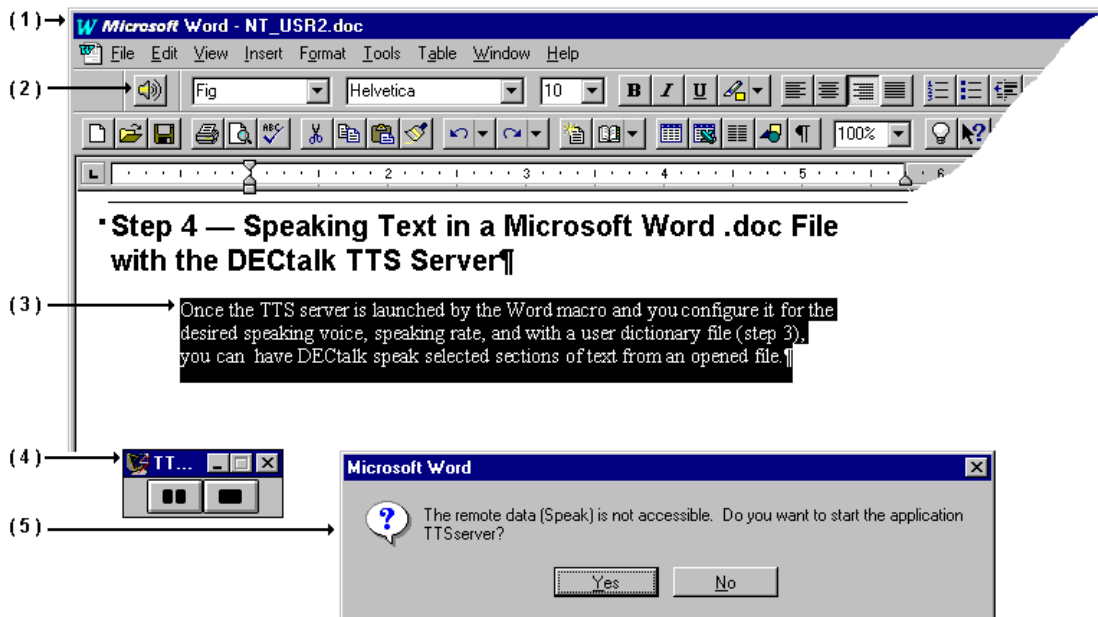


Table 2-11 Speaking Text in a Microsoft Word .doc file with the DECtalk TTS Server

Task/Location		Action	Result
Microsoft Word dialog with file opened (1) and the TTS Server macro button visible (2)	Step 1.	Select a range of text for DECtalk to speak. (3)	<p>DECtalk speaks the selected text and displays the TTS Server dialog. (4)</p> <p>If the server is not accessible, an error is returned. (5)</p>
TTS Server dialog (4)	Step 2.	Click the TTS Server button (2)	
	Step 3.	<p>Click the Pause or Stop button if you want to pause or stop DECtalk as it is speaking the text.</p> <p>Note: When you pause the server, all queued text remains queued up even though you deselect it in the Word document. When you stop the server, all queued text is flushed from the DECtalk system.</p>	

Using the Say Command-Line Applet

The DECtalk **Say** command-line applet lets you run DECtalk Software from the MS DOS command prompt window. **Say** provides many of the standard DECtalk input and output options available in the Speak and Sample applets and the DECtalk API.

Command syntax: **Say** [options] [text]

<i>Help Options</i>	
-h or -?	Write this file to the console. This option cancels any others on the command line.
<i>Output Options</i>	
-w outFile	Convert the text to the specified .WAV file instead of speaking to the sound device.
-l[t] outFile	Turn on text logging, which logs all input text to a file. This text includes any pre- and post- commands as well as commands sent to DECtalk by the Say program itself. Because this is the default logging mode, the 't' immediately following the '-l' is optional.
-ls outFile	Turn on syllable logging, which logs each syllable to a file.
-lp outFile	Turn on phoneme logging, which converts the input text to phonemes. This is useful if you want to get DECtalk Software to sing. You convert the text to phonemes and then insert the tone commands into the phoneme file. If no output options are specified, Say sends its output to the installed sound device, usually a sound card. Only one output option can be specified; if you specify more than one, the last one on the command line is used.
<i>Input Options</i>	
-pre preText	Text to be passed to DECtalk Software before the normal input. The prefix text is "forced" out before the input text is read.
-post postText	Text to be passed to DECtalk Software after the normal input. This is useful for passing terminating commands to DECtalk Software that normally are not part of the input. If the postfix text has spaces, it must be enclosed in quotes. An example is "[:phoneme off]" or "The End". The "normal" input is "forced" out before the postfix text is read.
text	Text appearing on the command line is spoken. The text to be spoken can come either from standard input or from the command

line.

Anything on the command line that is not an option is interpreted as text, as is anything following it on the command line. In other words, text to be spoken must appear on the command line after all options.

If the *first* word in the text has a dash (-) or slash (/) as its first character, you must precede it with another dash or slash. For example, to tell DECtalk to say the number -123, you would type the command:

Say --123

This is necessary to avoid having Say interpret the number as a command line option. If you embed DECtalk commands into your text, you must enclose them in quotes if they contain spaces. This is necessary because Say treats each space-delimited command-line argument as a separate "word," while DECtalk commands must be processed as single "words" by the Say program.

If no text is specified, Say takes its input from the standard input. For example, you could have Say speak a directory listing in Betty's voice by typing the following:

DIR | Say -pre "[:nb]"

Alternatively you could just type the following command

Say

Then enter text at the console. In this case, Say speaks each line after you press Enter, and exits after you press Ctrl/x. If you want Say to take its input from a file, use file redirection as in the following example, which reads the file foo.txt in Harry's voice:

Say -pre "[:nh]" < FOO.TXT

Dictionary Options

-d userDict	Loads the specified User Dictionary before speaking. This dictionary is loaded in place of any default User Dictionary determined by DECtalk.
-------------	---

Note

On UNIX systems the **Say** command must be entered in lower case letters: **say**.

Chapter 3 — *Introduction to the DECtalk Software API*

This chapter introduces the DECtalk Software Speech API (DAPI) and explains how to use the API to write application programs. This API is designed to be extensible for future text-to-speech growth while still being easy to use. The current DECtalk Software implementation supports multiple instances of DECtalk Software per processor.

The API calls give you a flexible method for manipulating the various parameters of DECtalk Software functionality from within your application. These calls perform a wide range of tasks associated with the text-to-speech system and are listed by function in Table 3-1.

Note

In addition to the DAPI, DECtalk Software supports the Microsoft Speech API (SAPI) Version 3.0. DECtalk Software for Windows now supports most of SAPI. This allows DECtalk Software to work as an OLE server in any OLE application environment. Information about SAPI is available in the Microsoft Developer Network (MSDN) CD-ROM under the *Microsoft Software Development Kit (SDK)*. See Chapter 4 in the *DECtalk Software Reference Guide* for a list of SAPI functions supported by DECtalk Software. For more information or documentation on SAPI, contact Microsoft.

Table 3-1 Text-To-Speech Calls by Category

Calls	Purpose
Core API	
TextToSpeechStartup()	<p>Initializes and starts up text-to-speech system.</p> <ul style="list-style-type: none"> In Windows, the user defines the window handle to which post messages can be sent. In Tru64 UNIX, the user defines the callback routine. <p>The calling application can then receive index marks, memory buffers, or status information through the above operating system dependent mechanism.</p>
TextToSpeechStartupEx()	<p>Initializes and starts the text-to-speech system. The user defines the callback routine that can be called when index marks, memory buffers, or status information needs to be sent to the calling application.</p>
TextToSpeechSpeak()	Speaks text from a buffer.
TextToSpeechShutdown()	Shuts down the text-to-speech system.
Audio Output Control	
TextToSpeechPause()	Pauses output.
TextToSpeechResume()	Resumes output.
TextToSpeechReset()	Purges the TTS system and stops output.
Blocking Synchronization	
TextToSpeechSync()	Synchronizes to the text stream.
Control and Status	
TextToSpeechSetSpeaker()	Selects one of nine speaking voices.
TextToSpeechGetSpeaker()	Returns the last speaking voice to have spoken.
TextToSpeechSetRate()	Sets the speaking rate of the text-to-speech system.
TextToSpeechGetRate()	Returns the speaking rate of the text-to-speech system.
TextToSpeechSetLanguage()	Sets the language to be used. (not supported)
TextToSpeechGetLanguage()	Returns the language in use. (not supported)
TextToSpeechGetStatus()	Gets the status of the text-to-speech system.
TextToSpeechGetCaps()	Retrieves the capabilities of the text-to-speech system.

Calls	Purpose
<i>Special Text-To-Speech Mode</i>	
TextToSpeechOpenWaveOutFile()	Opens a file for output. TextToSpeechSpeak() writes audio data in wave format to this file.
TextToSpeechCloseWaveOutFile()	Closes the specified wave file and returns the text-to-speech system to its startup state.
TextToSpeechOpenLogFile()	Opens a log file. TextToSpeechSpeak() writes text, phonemes, or syllables to this file.
TextToSpeechCloseLogFile()	Closes the specified log file and returns the text-to-speech system to its startup state.
TextToSpeechOpenInMemory()	Produces buffered speech samples in wave format whenever TextToSpeechSpeak() function is called. The calling application is notified when memory buffer is filled.
TextToSpeechCloseInMemory()	Returns the text-to-speech system to its startup state.
TextToSpeechAddBuffer()	Adds a shared-memory buffer allocated by the calling application to the memory buffer list.
TextToSpeechReturnBuffer()	Returns the current shared-memory buffer.
<i>Loading and Unloading a User Dictionary</i>	
TextToSpeechLoadUserDictionary()	Loads a user dictionary.
TextToSpeechUnloadUserDictionary()	Unloads a user dictionary.

The Core API Calls

The core DECtalk Software API calls are:

- `TextToSpeechStartup` and `TextToSpeechStartupEx`, known as the startup functions, allocate system resources.
- `TextToSpeechStartup`, which is operating-system dependent, has different calling parameters. On UNIX, a callback routine may be defined; on Windows, a window handle can be passed to the `TextToSpeechStartup` call.
- `TextToSpeechStartupEx` works the same way on both the UNIX and Windows platforms and allows a callback routine to be passed.
- `TextToSpeechSpeak` queues text to the system.
- `TextToSpeechShutdown` returns all system resources allocated by the startup functions.

The simplest application might use only these functions.

TextToSpeechSpeak

The `TextToSpeechSpeak` call is used to pass a null terminated string of characters to the text-to-speech system. The system queues all characters up to the null character. If the `TTS_FORCE` argument is not used in the call to this function, then the queued characters are seamlessly concatenated with previously queued characters. The `TTS_FORCE` argument is used to force a string of characters to be spoken even though the string might not complete a clause. For example:

```
TextToSpeechSpeak( phTTS, "This will be spoken. ", TTS_NORMAL);
```

This text is spoken immediately by the system because it is terminated by a period and a space. These last two characters are one way to create a clause boundary.

```
TextToSpeechSpeak( phTTS, "This will be spok", TTS_NORMAL );
```

This produces output only after the following line of code executes to complete the phrase.

```
TextToSpeechSpeak( phTTS, "en. ", TTS_NORMAL );
```

Finally, a nonphrase string can be forced to be spoken by using the `TTS_FORCE` argument.

```
TextToSpeechSpeak( phTTS, "This will be spok", TTS_FORCE );
```

Note that the word *spoken* is not pronounced correctly in this case even if the final characters, *en* are queued immediately afterward.

The TTS_FORCE argument causes the previous line to be spoken before taking any subsequently queued characters into account.

Important Text-Queuing Information

It is important that all sentences are separated with a space, new line, or line feed character. To make sure of this, it is recommended that a space character is routinely included after the final punctuation in a sentence. An example of what happens without this is shown below:

```
TextToSpeechSpeak( phTTS, "They are tired.", TTS_NORMAL );  
TextToSpeechSpeak( phTTS, "I am Cold.", TTS_NORMAL );
```

Because there is no space, the text-to-speech system processes the following string:

```
"They are tired.I am Cold."
```

The string, *tired.I*, will be pronounced incorrectly because the system treats it as one item instead of two words.

Clause-Based Synthesis

DECTalk Software processes all text on a clause basis. A clause is defined as a group of words terminated by a period, question mark, exclamation point, question mark, semicolon, or a colon and followed by white space. If you send DECTalk Software a string of text with NO terminator, it goes into an infinite loop waiting for a clause terminator. The **Sync** in-line command can be used to complete a clause without using a terminator.

Callback Routines and Window Procedures

After TextToSpeechSpeak is called, the text-to-speech system can notify the calling application in one of two ways. On Tru64 UNIX, the information can be sent back through the callback routine defined in the startup function. On Windows, the information is passed back through window messages or callback routines, depending on which startup function was called. See the *DECTalk Software Reference Guide* for more information on startup functions.

Callback routines should not call TextToSpeech...() calls. If a callback routine does call TextToSpeech...() functions, a crash may occur in the application calling DECTalk Software.

Both the window procedures and the callback routines have a message type and the WPARAM and the LPARAM parameters. There are three message types defined: one for error and status messages, one for index marks, and one to return memory buffers when using the TextToSpeechOpenInMemory call. The WPARAM and the LPARAM parameters contain specific information, based on the message type.

Phoneme Notifications

Phoneme notifications are sent using the standard notification method (callback or message). The message identifier is the DECtalk_Visual_Message registered window message. The data portions of the message contain a structure that indicates the current phoneme, the next phoneme (not yet implemented), and the duration of the current phoneme.

The callback (and message) parameters are as follows:

- `uiMsg` `DECtalk_Visual_Message`
- `lParam1` A `DWORD` that maps the `dwData` part of the `PHONEME_TAG` structure
- `lParam2` The time, in system milliseconds (`timeGetTime()`), when the phoneme started

The union `PHONEME_TAG` (from `ttsapi.h`) defines the data format for the phoneme part of the message. The following is included for reference, but the definitions always should be taken from the `ttsapi.h` file.

```
typedef struct {
    UCHAR  cThisPhoneme;    // current phoneme
    UCHAR  cNextPhoneme;    // next phoneme, if known
    WORD   wDuration;       // duration in milliseconds
} PHONEME_MARK;

typedef union {
    PHONEME_MARK pmData;
    DWORD dwData
} PHONEME_TAG
```

The `cThisPhoneme` and `cNextPhoneme` fields are ASCII printable single-character phoneme identifiers. The phoneme identifiers are specific to each language. See the *DECtalk Software Reference Guide* for the English phoneme identifiers for `cThisPhoneme` and `cNextPhoneme`.

An example callback routine to show phoneme notification is as follows:

```

VOID TTSCallbackRoutine (LONG lParam1,
                        LONG lParam2,
                        DWORD dwInstanceParam,
                        UINT uiMsg)
{
    PHONEME_TAG ptPhoneme; // place to put the phoneme data..
    ptPhoneme.dwData = lParam2;
    fprintf(fpLogfil, "{%ld} ", timeGetTime());
    if (uiMsg == uiID_Index_Msg)
    {
        fprintf(fpLogfil,
            " [Index] p1=%08lx p2=%08lx i=%08lx",
            lParam1, lParam2, dwInstanceParam);
        // watch for index marks..
        if (lParam2 == 1)
            uiSystemState = TEXT_STARTED;
        if (lParam2 == 2)
            uiSystemState = TEXT_DONE;
    }
    else if (uiMsg == uiID_Error_Msg)
    {
        fprintf(fpLogfil,
            " [Error] p1=%08lx p2=%08lx i=%08lx",
            lParam1, lParam2, dwInstanceParam);
    }
    else if (uiMsg == uiID_Buffer_Msg)
    {
        fprintf(fpLogfil,
            " [Buffer] p1=%08lx p2=%08lx i=%08lx",
            lParam1, lParam2, dwInstanceParam);
    }
    else if (uiMsg == uiID_Visual_Msg)
    {
        char szThisPhoneme[10] = "";
        char szNextPhoneme[10] = "";
        fprintf(fpLogfil,
            " [Visual] p1=%08lx p2=%08lx i=%08lx",
            lParam1, lParam2, dwInstanceParam);
        // decode it..
        if (ptPhoneme.pmData.cThisPhoneme == '\0')
        {
            // null
            strcpy (szThisPhoneme, "<null>");
        }
        else
        {
            szThisPhoneme[0] = ptPhoneme.pmData.cThisPhoneme;
            szThisPhoneme[1] = '\0';
        }
        if (ptPhoneme.pmData.cNextPhoneme == '\0')
        {
            // null
            strcpy (szNextPhoneme, "<null>");
        }
    }
}

```

```

else
{
    szNextPhoneme[0]=ptPhoneme.pmData.cThisPhoneme;
    szNextPhoneme[1]='\0';
}
fprintf(fpLogfil,
    " time: %ld this:%s next:%s expected at %ld",
    lParam1,
    szThisPhoneme,
    szNextPhoneme,
    timeGetTime()+ptPhoneme.pmData.wDuration);
}
else
{
    fprintf(fpLogfil,
        " [??] msg=%08lx, p1=%08lx, p2=%08lx, i=%08lx",
        (DWORD)uiMsg, lParam1, lParam2,
        dwInstanceParam);
}
fprintf(fpLogfil, "\n");
}

```


Error Messages

The message type for error and status messages is defined as:

For Callback Routines:

```
uiID_Error_Message = TTS_MSG_STATUS;
```

For Window Messages:

```
uiID_Error_Message =  
RegisterWindowMessage("DEctalkErrorMessage");
```

One of the error codes listed below, defined in the `ttsapi.h` file, is contained in the WPARAM parameter. The LPARAM parameter contains a value of type MMRESULT. The values can be found in the `ttsapi.h` file.

Parameter
<pre>#define ERROR_IN_AUDIO_WRITE #define ERROR_OPENING_WAVE_OUTPUT_FILE #define ERROR_GETTING_DEVICE_CAPABILITIES #define ERROR_READING_DICTIONARY #define ERROR_WRITING_FILE #define ERROR_ALLOCATING_INDEX_MARK_MEMORY #define ERROR_OPENING_WAVE_FILE #define ERROR_BAD_WAVE_FILE_FORMAT #define ERROR_UNSUPPORTED_WAVE_FILE_FORMAT #define ERROR_UNSUPPORTED_WAVE_AUDIO_FORMAT #define ERROR_READING_WAVE_FILE #define TTS_AUDIO_START #define TTS_AUDIO_STOP</pre>

Index Mark Messages

The message type for index marks is defined as:

For Callback Routines:

```
uiID_Index_Message = TTS_MSG_INDEX_MARK;
```

For Window Messages:

```
uiID_Index_Message =  
RegisterWindowMessage( "DEctalkIndexMessage" );
```

The LPARAM parameter contains the index mark value. Note that the index mark information can also be returned in the buffer message. This happens when the text-to-speech system is in the speech-to-memory mode as a result of the Text-To-SpeechOpenInMemory call. See *Special Text-To-Speech Modes* for more information on this topic..

Buffer Messages

The message type for buffered speech samples is defined as:

For Callback Routines:

```
uiID_Buffer_Message = TTS_MSG_BUFFER;
```

For Window Messages:

```
uiID_Buffer_Message =  
RegisterWindowMessage( "DEctalkBufferMessage" );
```

A pointer to the returned memory buffer is contained in the LPARAM parameter. Additional information about index marks and phonemes may also be returned here. See *Return of Memory Buffer* for additional details on what information gets returned.

Callback Routine Example

```
VOID main()
{
    LPTTS_HANDLE_TAG  phTTS;
    TextToSpeechStartupEx(&phTTS, WAVE_MAPPER,REPORT_OPEN_ERROR,
                        Callback, 0);
}

VOID Callback(LONG lParam1, LONG lParam2, DWORD dwCallbackParameter,
             UINT uiMsg)
{
    if (uiMsg == TTS_MSG_STATUS)
    {
        // lParam1 contains error code
        // lParam2 contains value of MMRESULT
    }
    else if (uiMsg == TTS_MSG_INDEX_MARK)
    {
        // lParam2 contains index mark
    }
    else if (uiMsg == TTS_MSG_BUFFER)
    {
        // lParam2 contains Pointer to buffer
    }
}
```

Window Procedure Example

```
static UINT uiID_Error_Message = 0;
static UNIT uiID_Buffer_Message = 0;
static UNIT uiID_Index_Message = 0;

// Window Procedure
VOID MyWndProc(LONG lParam1, LONG lParam2, DWORD dwCallbackParameter,
             UINT uiMsg)
{
    if (uiMsg == uiID_Error_Message)
    {
        // lParam1 contains error code
```

```

        // lParam2 contains value of MMRESULT
    }
    else if (uiMsg == uiID_Index_Message)
    {
        // lParam2 contains index mark
    }
    else if (uiMsg == uiID_Buffer_Message)
    {
        // lParam2 contains Pointer to buffer
    }
}

VOID main()
{
    LPTTS_HANDLE_TAG phTTS;
    TextToSpeechStartupEx(&phTTS, WAVE_MAPPER, REPORT_OPEN_ERROR,
                        MyWndProc, 0);

    // Registering messages to report DECTalk asynchronous events
    uiID_Error_Message = RegisterWindowMessage("DECTalkErrorMessage");

    // Callback message is registered indicating index marks
    uiID_Index_Message = RegisterWindowMessage("DECTalkIndexMessage");

    // Callback message is registered indicating DECTalk has filled up
    // an audio buffer
    uiID_Buffer_Message = RegisterWindowMessage("DECTalkBufferMessage");
}

```

Audio Output Control Calls

The audio output control calls:

- Pause the audio output
- Resume output after pausing
- Reset the text-to-speech system

An application can control speech output using `TextToSpeechPause`, `TextToSpeechResume`, and `TextToSpeechReset`. A reset discards all queued text and stops and discards all queued audio. If the application calls `TextToSpeechOpenInMemory` to store speech samples in memory, a reset causes all buffers to be returned to the application.

Blocking Synchronization Call

The TextToSpeechSync call blocks execution of the application until all text previously queued by the TextToSpeechSpeak call is spoken. After the blocking synchronization function is called, there is no way to abort until all text is processed. This could take hours if there is a great deal of text queued. Non-blocking synchronization can be provided using the **Index Mark** in-line command.

Control and Status Calls

The control and status calls described in Table 3-2 provide additional information for the text-to-speech system.

Table 3-2 API Control and Status Calls

Call	Description
TextToSpeechSetSpeaker()	Sets the speaker's voice, which becomes active at the next clause boundary.
TextToSpeechGetSpeaker()	Returns the value of the last speaker to have spoken.
TextToSpeechSetRate()	Sets the speaking rate, which becomes active at the next clause boundary.
TextToSpeechGetRate()	Gets the speaking rate.
TextToSpeechSetLanguage()	Sets the text-to-speech system language. Refer to the ttsapi.h file for a list of valid languages, e.g. TTS_AMERICAN_ENGLISH. (not supported)
TextToSpeechGetLanguage()	Returns the current text-to-speech system language. (not supported)
TextToSpeechGetStatus()	Returns various text-to-speech system parameters, such as the number of characters in the text pipe, the ID of the wave output device, and a Boolean value that indicates whether the text-to-speech system is currently speaking or silent.
TextToSpeechGetCaps()	Returns the capabilities of the text-to-speech system, which includes the version number of the system, the number of speakers, the maximum and minimum speaking rate, and the supported languages.

Special Text-To-Speech Modes

After the startup function is called by an application, the application then can call TextToSpeechSpeak to speak text. This converts text-to-speech and sends the speech sample to an audio device, depending on the setting of the dwFlags field in the startup routine.

The DECTalk Software API also provides alternatives for the speech samples by allowing the user to select one of the special text-to-speech modes. The special text-to-speech mode calls allow the speech samples to be written to a Wave file; converted to text, phonemes, or syllables and stored in a log file; or saved in memory buffers to be passed back to the calling application. Each mode-switch call has a corresponding call to return the text-to-speech system to the startup state. These calls are listed in Table 3-3.

Table 3-3 Special Text-To-Speech Modes

Open Function	Mode	Close Function
TextToSpeechOpenWaveOutFile()	wave-file	TextToSpeechCloseWaveOutFile()
TextToSpeechOpenLogFile()	log-file	TextToSpeechCloseLogFile()
TextToSpeechOpenInMemory()	speech-to-memory	TextToSpeechCloseInMemory()

The text-to-speech system must be in the startup state before calling any of the open function calls listed in Table 3-3. The corresponding close calls return the system to the startup state.

Wave-File Mode

After calling the startup function, an application can call TextToSpeechOpenWaveOutFile. This call blocks until all previously queued text is processed. After the call returns, all text subsequently queued by the TextToSpeechSpeak call is converted to speech samples and written into a wave file. The TextToSpeechCloseWaveOutFile call blocks until the speech from all previously queued text is written to the file.

Log-File Mode

After calling the startup function, an application can call the TextToSpeechOpenLogFile. This call blocks until all previously queued text is processed. After the call returns, all text subsequently queued by the startup function is written to a log file as text, phonemes, or syllables. The phonemes and

syllables are written using the arpabet phoneme alphabet. The `TextToSpeechCloseLogFile` call terminates phoneme logging and blocks until the speech from all previously queued text is processed.

Speech-To-Memory Mode

After calling the startup function, an application can call `TextToSpeechOpenInMemory`. This call blocks until all previously queued text is processed. After the call returns, all text subsequently queued by the `TextToSpeechSpeak` call is converted to speech and stored in the memory buffers supplied by the `TextToSpeechAddBuffer` call. The `TextToSpeechCloseInMemory` call blocks until the speech from all previously queued text is processed.

When a memory buffer is completed, the buffer is returned to the calling application. See *Callback Routines and Window Procedures* for more information about passing data back to the calling application.

Initialization of Memory Buffers

A memory buffer is a `TTS_BUFFER_T` structure. This structure and the elements of its `lpData`, `lpPhonemeArray`, and `lpIndexArray` members must be *allocated*. (Note that these last two pointers can be set to `NULL` optionally if they are not used by the application.)

- The `lpData` element points to a byte array. The `dwMaximumBufferLength` element must be set to the length of this array.
- If the `lpPhonemeArray` element is set to `NULL`, no phonemes are returned. Otherwise, the `lpPhonemeArray` element must point to an application-allocated array of structures of type `TTS_PHONEME_T`. The length of this array must be copied into the `dwMaximumNumberOfPhonemeChanges` element.
- If the `lpIndexArray` element is set to `NULL`, no index marks are returned. Otherwise, the `lpIndexArray` element must point to an application-allocated array of structures of type `TTS_INDEX_T`. The length of this array must be copied into the `dwMaximumNumberOfIndexChanges` element.

TTS_BUFFER_T Structure (ttsapi.h)

This structure is allocated by the calling application and passed to the text-to-speech system through the `TextToSpeechAddBuffer` call.

```

typedef struct TTS_BUFFER_TAG
{
    LPSTR lpData;
    LPTTS_PHONEME_T lpPhonemeArray;
    LPTTS_INDEX_T lpIndexArray;
    DWORD dwMaximumBufferLength;
    DWORD dwMaximumNumberOfPhonemeChanges;
    DWORD dwMaximumNumberOfIndexMarks;
    DWORD dwBufferLength;
    DWORD dwNumberOfPhonemeChanges;
    DWORD dwNumberOfIndexMarks;
    DWORD dwReserved;
} TTS_BUFFER_T;

typedef TTS_BUFFER_T * LPTTS_BUFFER_T;

```

TTS_PHONEME_T Structure (ttsapi.h)

This structure is used to store phoneme, stress, and syntactic codes of the speech sample. Refer to the *Phonemic Symbols* and the *Stress and Syntactic Symbols* section in the *DECtalk Software Reference Guide* for a detailed list of these symbols.

```

typedef struct TTS_PHONEME_TAG
{
    // Phoneme, Stress or Syntactic symbols
    DWORD dwPhoneme;

    // Indicates which sample in the memory buffer
    // corresponds to the phoneme symbol
    DWORD dwPhonemeSampleNumber;

    // Duration of phoneme symbol in milliseconds
    DWORD dwPhonemeDuration

    DWORD dwReserved;
} TTS_PHONEME_T;

typedef TTS_PHONEME_T * LPTTS_PHONEME_T;

```

TTS_INDEX_T Structure (ttsapi.h)

This structure is used to store index marks defined by the **Index Mark** in-line command. Refer to the Index Mark in-line command in the *DECtalk Software Reference Guide* for information on the syntax and uses of index marks.

```

typedef struct TTS_INDEX_TAG
{
    // Index Mark value
    DWORD dwIndexValue;
}

```

```

        // Indicates which sample in the memory buffer
        // corresponds to the index mark value
        DWORD dwIndexSampleNumber;

        DWORD dwReserved;
    } TTS_INDEX_T;

typedef TTS_INDEX_T * LPTTS_INDEX_T;

```

TTS_CAPS_T Structure (ttsapi.h)

This structure is used by the TextToSpeechGetCaps call to store language and proper name support, the sample rate, the minimum and maximum speaking rates, the number of predefined speaking voices, the character-set supported, and the version number.

```

typedef struct TTS_CAPS_TAG
{
    DWORD dwNumberOfLanguages;
    LPLANGUAGE_PARAMS_T lpLanguageParamsArray;
    DWORD dwSampleRate;
    DWORD dwMinimumSpeakingRate;
    DWORD dwMaximumSpeakingRate;
    DWORD dwNumberOfPredefinedSpeakers;
    DWORD dwCharacterSet;
    DWORD Version;
} TTS_CAPS_T;

typedef TTS_CAPS_T * LPTTS_CAPS_T;

```

The *lpLanguageParamsArray element is a pointer to an array of structures of type LANGUAGE_PARAMS_T. The "dwNumberOfLanguages" element contains the number of elements in this array. The dwLanguage element of each structure in this array equals one of the supported languages. Currently, only the following value will be returned in the dwLanguage element.

TTS_AMERICAN_ENGLISH

The dwLanguageAttributes element of each structure can contain the following constant, defined in include file ttsapi.h:

PROPER_NAME_PRONUNCIATION

Return of Memory Buffers

When the memory buffer is completed, it is returned to the calling application. A memory buffer is considered to be completed when any one of the following occurs:

- The memory buffer, which is pointed to by the lpData field, is filled.
- The phoneme array is filled. Refer to the *DECtalk Software Reference Guide* for more information on the phoneme codes.
- The index mark array is filled. Refer to *DECtalk Software Reference Guide* for more information on the index marks.
- The TTS_FORCE argument is used in the call to TextToSpeechSpeak.

The application must not modify any buffer passed to the text-to-speech system by the TextToSpeechAddBuffer call until the buffer is returned from the text-to-speech system to the calling application. The application then owns the buffer. If no buffers are available, the system blocks. If the application is processing relatively long passages of text, the application should queue several buffers and then requeue each buffer after finishing with that buffer, so that the system is not idle.

A call to TextToSpeechReset returns all buffers to the application. The TextToSpeechReturnBuffer call forces the return of the current memory buffer, whether it is filled or not. This call might not be required by most applications. It is included so an application can obtain the last buffer without forcing that buffer to be sent with the TTS_FORCE argument in the TextToSpeechSpeak call.

When the memory buffer, a TTS_BUFFER_T structure, is returned to the calling application, it contains the following return values:

Parameter	Value
dwBufferLength	Number of bytes of audio samples.
lpData	Pointer to the audio sample data.
dwNumberOfPhonemeChanges	Number of phoneme changes.
lpPhonemeArray	Pointer to the phoneme information.
dwNumberOfIndexMarks	Number of index marks.
lpIndexArray	Pointer to the index mark information.

The index and phoneme arrays each contain a time stamp in the form of a sample number. This sample number is initialized at zero at startup and after each call to TextToSpeechReset. The phoneme array also contains the current phoneme duration in frames. Each frame is approximately 6.4 milliseconds.

Dictionary Calls (UNIX only)

DECTalk Software comes with a main dictionary, which is a compiled list of words and their associated phonemic interpretation. This main dictionary is loaded during the startup function. In addition to a main dictionary, users can create their own user dictionaries and access them using the `TextToSpeechLoadUserDictionary` and `TextToSpeechUnloadUserDictionary` calls.

Creating a User Dictionary

DECTalk Software includes two dictionary applets. Both applets help users to create their own user dictionaries, which can be loaded at startup time or while the text-to-speech system is active.

Application	Location	Comments
userdict	/usr/ucb/userdict	Compiles a user dictionary from a file containing both the word and its phonemic pronunciation.
windict	/usr/ucb/windict	Application that has a graphical user interface and can: <ul style="list-style-type: none">• Pronounce words• Translate words into their phonemic symbols• Compile a user dictionary from a list of words and their phonemic symbols

Loading the Main Dictionary

The startup function loads the DECTalk Software main pronunciation dictionary.

```
/usr/lib/dtk/dtalk_language_code.dic
```

Replace *language_code* with the designation for the appropriate language, such as `US` for United States English, `GR` for German, `LA` for Latin American Spanish, or `UK` for United Kingdom English; for example, `dtalk_us.dic`.

If the dictionary file cannot be found or is loaded improperly, then the startup function returns an error.

Loading the User Dictionary

The startup function attempts to load the DECTalk Software user pronunciation dictionary from the user's home directory.

```
$HOME/user.dic
```

If the dictionary file is found but cannot be loaded, the startup function returns an error.

After the startup function has completed successfully, the user can load and unload user dictionaries by using the `TextToSpeechLoadUserDictionary` and `TextToSpeechUnloadUserDictionary` calls.

Dictionary Calls (Windows only)

DECTalk Software comes with a main dictionary, which is a compiled list of words and their associated phonemic interpretation. This main dictionary is loaded during the startup function call. In addition to a main dictionary, users can create their own user dictionaries and access them using the `TextToSpeechLoadUserDictionary` and `TextToSpeechUnloadUserDictionary` calls.

Creating a User Dictionary

DECTalk Software includes the following files, which help users to create their own user dictionaries. A user dictionary can be loaded at startup time or while the text-to-speech system is active.

File Name	Location	Comments
windic.exe	\Program Files\DECTalk	Application that has a graphical user interface and can: <ul style="list-style-type: none">• Pronounce words• Translate words into their phonemic symbols• Compile a user dictionary from a list of words and their phonemic symbols
user.tab	\Program Files\DECTalk	Source file used by windic.exe to create the user dictionary.

Loading the Main Dictionary (Dynamic or Static Engine)

The `TextToSpeechStartup` call attempts to find the entry for the DECTalk Software main pronunciation dictionary in the registry at:

```
REGISTRY KEY:  
  
HKEY_LOCAL_MACHINE\SOFTWARE\DECTalk Software\DECTalk\version\lang  
lang  
  
Value: MainDict
```

The dictionary is then set to:

```
[user selected dir]\system\dtalk_language_code.dic
```

Replace *version* using the format x.xx in the path designation with the current version number for the DECtalk Software, such as 4.60.

Replace *lang lang* with the designation for the appropriate language, such as US for United States English, GR for German, LA for Latin American Spanish, or UK for United Kingdom English; for example, dtalk_us.dic.

If the MainDict entry, as specified in the registry entry, cannot be found, the TextToSpeechStartup call returns a value of MMSYSERR_ERROR. If the registry entry is missing, then the TextToSpeechStartup call defaults to looking in the application's default directory for DTALK_*language_code*.DIC to be loaded as the main pronunciation dictionary.

If the main pronunciation dictionary fails to be loaded, the TextToSpeechStartup call returns a value of MMSYSERR_ERROR.

Loading the Main Dictionary (Static Engine)

The TextToSpeechStartup call attempts to find the dictionary in the home directory of the statically linked application. If that fails, the TextToSpeechStartup call then looks in the defined PATH of the Windows operating system. The file name in either case is DTALK_*lang_lang*.DIC. If the PATH look up fails, the value from the registry entry for the static engine is used. The registry entry for the static engine is:

REGISTRY KEY:

HKEY_LOCAL_MACHINE\SOFTWARE\DECtalk Software\DEctalk\static*lang lang*

Value: MainDict

If the main pronunciation dictionary fails to be loaded, the TextToSpeechStartup call returns a value of MMSYSERR_ERROR.

Loading the User Dictionary

The TextToSpeechStartup call attempts to find the entry for the DECtalk Software user pronunciation dictionary in the registry at:

REGISTRY KEY:

HKEY_CURRENT_USER\Software\DECtalk Software\DECtalk*version**lang lang*

Value: UserDict

The dictionary is then set to:

[user selected dir]\user.dic

Replace *version* using the format x.xx in the path designation with the current version number for the DECtalk Software, such as 4.60.

Replace *lang lang* with the designation for the appropriate language, such as US for United States English, GR for German, LA for Latin American Spanish, or UK for United Kingdom English.

If the UserDict entry as specified in the registry entry cannot be found, then the TextToSpeechStartup call returns a value of MMSYSERR_ERROR. If the registry entry is missing, then the TextToSpeechStartup call defaults to looking in the application default directory for `user.dic` to be loaded as the user pronunciation dictionary.

If the user pronunciation dictionary fails to be loaded, then the TextToSpeechStartup call returns a value of MMSYSERR_ERROR.

Registry Entry Information

OEM customers can install the 32-bit code for DECtalk Software, together with other application software, on an end-user computer system, without using the DECtalk installation software. In such cases, you need to make registry entries on the end-user system to enable DECtalk Software to work correctly with your application. When the DECtalk engine starts, it checks for licenses, descriptions, numbers of instances, and so on in the registry entries.

An installation program that you create to install your application and the necessary components of DECtalk Software on an end-user system must set up registry entry information on that system.

In addition to installation considerations, you may also need registry entry information to resolve some kinds of errors. For example, DECtalk Software may report that the user dictionary is not found in the expected location. You can look up registry entry information in the following list to see how to interpret registry entries correctly and to see what registry entries have changed in the current version of DECtalk.

Note

Earlier versions of DECtalk Software V4.6 use **DigitalEquipmentCorporation** in the registry entries, as follows:

HKEY_LOCAL_MACHINE\SOFTWARE\DigitalEquipmentCorporation\DECtalk\
version\lang lang

Registry Entry Formats and Locations

```
[HKEY_LOCAL_MACHINE\SOFTWARE\DECtalk  
Software\Classes\CLSID\{clsidno}]  
"DECtalk_{lang}{lang}"="DECtalk TTS Engine {lang}{lang}"
```

```
[HKEY_LOCAL_MACHINE\SOFTWARE\DECtalk  
Software\Classes\CLSID\{clsidno}\InprocServer32]  
@"C:\WIN95\Speech\dtlktse_{lang}{lang}.dll"
```

```
[HKEY_LOCAL_MACHINE\SOFTWARE\DECtalk  
Software\Classes\Software\DECtalk\{version}  
"Version"="DECtalk MultLang version {version}  
"Language"="MULTI LANGUAGE"
```

```
[HKEY_LOCAL_MACHINE\SOFTWARE\DECTalk
Software\Microsoft\Windows\CurrentVersion\App Paths\{appname}.exe]
"Path"="C:\Program Files\DECTalk\;C:\Program Files\DECTalk\Help"
@="C:\Program Files\DECTalk\{appname}.exe"
```

```
[HKEY_LOCAL_MACHINE\SOFTWARE\DECTalk
Software\Microsoft\Windows\CurrentVersion\Uninstall\DECTalkDeinstK
ey]
"UninstallString"="C:\WIN95\uninst.exe -f"C:\Program
Files\DECTalk\DeIsL6.isu\"
"DisplayName"="DECTalk V{version}"
```

```
[HKEY_LOCAL_MACHINE\SOFTWARE\DECTalk
Software\Voice\TextToSpeech\Engine]
"DECTalk_{lang}{lang}"="{clsidno}"
```

```
[HKEY_LOCAL_MACHINE\SOFTWARE\DECTalk Software\DECTalk\{version}]
"Company"="q"
"Installer"="q"
"LicUpdPwd"="{licpswd}"
"Lock_MGR"="2"
"Licenses"="{liccount}"
"MultiLang"="1"
```

```
[HKEY_LOCAL_MACHINE\SOFTWARE\DECTalk
Software\DECTalk\{version}\{lang}{lang}]
"Version"="DECTalk {lang}{lang} version {version}"
"Language"="{langname}"
"MainDict"="C:\Program
Files\DECTalk\{lang}{lang}\DTALK_{lang}{lang}.DIC"
```

```
[HKEY_LOCAL_MACHINE\SOFTWARE\DECTalk Software\DECTalk\Langs]
"US"="ENGLISH, US"
"DefaultLang"="UK"
"SP"="CASTILIAN SPANISH"
"LA"="LATIN AMERICAN SPANISH"
"GR"="GERMAN"
"UK"="ENGLISH, UK"
```

```
[HKEY_CURRENT_USER\Software\DECTalk
Software\DECTalk\{version}\{lang}{lang}]
"UserDict"="C:\Program
Files\DECTalk\{lang}{lang}US\USER_{lang}{lang}.DIC"
```

Registry Entry Key

Where *lang lang* is "US", "UK", "SP", "LA" or "GR".

Quotation marks are not part of the value.

Where *langname* is the language name for a specific language:

<i>lang lang</i>	<i>langname</i>
US	"ENGLISH, US"
SP	"CASTILIAN SPANISH"
LA	"LATIN AMERICAN SPANISH"
GR	"GERMAN"
UK	"ENGLISH, UK"

Quotation marks are not part of the value.

Where *version* is "4.60" or current version number.

Where *appname* is the name of an application using DECTalk(tm).

Where *licpswd* is encrypted password for licenseu.exe program.

Where *liccount* is encrypted no. of authorized engine licenses.

Where *clsidno* is the CLSID numbers for a specific *lang lang*.

<i>lang lang</i>	<i>clsidno</i>
"US"	"{ED737300-8FCB-11ce-AB5D-00AA00590F2B}"
"SP"	"{99EE9560-A4A6-11d1-BEB2-0060083E8376}"
"LA"	"{99EE9550-A4A6-11d1-BEB2-0060083E8376}"
"GR"	"{99EE9570-A4A6-11d1-BEB2-0060083E8376}"
"UK"	"{99EE9540-A4A6-11d1-BEB2-0060083E8376}"

You must include the {} around the *clsidno* specified.

Quotation marks are not part of value.

Sample Programs (UNIX only)

Some applets are included with DECTalk Software. These sample applications are included to demonstrate the use of DECTalk Software APIs. These sources can be used as templates for other applications that you might want to develop.

Some of the applets demonstrate the DECTalk Software API extension to the multimedia API specified in the Multimedia Services for Tru64 UNIX software product. These applets are those that play back speech samples to an audio device and are built using the `libttsmme.so` shared library.

Other applets demonstrate the DECTalk Software API that does not include the multimedia extensions. These applets are those that do not require any audio devices. These applets can be built using the `libtts.so` shared library.

Sources to these programs can be found in:

```
/usr/examples/dtk/dtsamples
```

The samples and a brief description are listed below.

Applet	Description
xmsay	Demonstrates the use of DECTalk Software APIs in the Motif windows environment.
say	Converts text into speech samples that are sent to an audio device.
dtmemory	Converts text into speech samples stored in memory buffers.
aclock	Announces the time at specified intervals.

Building Sample Programs

Sample programs can be created from the sources provided in `/usr/examples/dtk/dtsamples`. This section describes the procedure for building the sample programs. Before proceeding, make sure that the DECTalk Software development kit has been installed. See the *DECTalk™ Software Installation Guide* for more information on different components of DECTalk Software.

1. Create a local directory in which you want to build the sample programs.
2. Copy all the files in `/usr/examples/dtk/dtsamples` into the directory that you just created.
3. Generate a *Makefile* from the *Imakefile* by typing:

```
usr/bin/X11/xmkmf
```

4. Compile and link the sample application programs by typing the following command while still in the directory that you just created:

```
make all
```

5. After the make program completes successfully, the sample programs are ready to run.

In addition to the sample programs, you will also find some demo text files in your directory. These files demonstrate some of the DECTalk Software capabilities.

Header Files

DECTalk Software provides header files that contain all the public data-structure definitions to which the DECTalk Software API refers. They are `ttssapi.h`, `dtmmedefs.h`, and `LL_xx_PH.H`, where *xx* is the language abbreviation for each of the supported languages. When DECTalk Software is installed, these files are in `/usr/include/dtk`.

- **ttssapi.h** contains definitions of constants used in the DECTalk Software API calls, data structures that define the buffers that DECTalk Software returns, and the API function prototype definitions.
- **dtmmedefs.h** contains the basic data structure definitions used by DECTalk Software. It also contains definitions of error codes and audio formats. This file enables you to compile, link, and run certain DECTalk Software programs

even if Multimedia Services for Tru64 UNIX is not installed. Specifically, if you are writing an application program that does not use the audio drivers, but you want to use DECtalk Software to produce synthesized speech buffers using the `TextToSpeechOpenInMemory` call, you can use `dtmmedefs.h` to circumvent the requirement for Multimedia Services for Tru64 UNIX.

- Header files for the phoneme codes are, as follows:

<code>L_US_PH.H</code>	English (United States)
<code>L_GR_PH.H</code>	German
<code>L_SP_PH.H</code>	Castilian Spanish
<code>L_LA_PH.H</code>	Latin American Spanish
<code>L_UK_PH.H</code>	English (United Kingdom)

Shareable Libraries

DECtalk Software APIs are available to programmers in two shareable libraries.

- **`libtts.so`** contains device independent DECtalk Software routines.
- **`libttsmme.so`** contains the DECtalk Software library that requires Multimedia Services for Tru64 UNIX.

As in the case of the header files, if you want to use DECtalk Software to write an application that produces buffers of synthesized speech, then the program is linked with the `libtts` shared library. If, on the other hand, you want to use Multimedia Services for Tru64 UNIX to communicate with the audio subsystem, the application has to be linked with the `libttsmme` shared library.

Sample Programs (Windows only)

Sample programs include:

<code>dtssample</code>	This is an example of a basic Windows editor with integrated text-to-speech.
<code>Say</code>	This is an example of a command-line program using DECtalk Software.
<code>dtmemory</code>	This is an example of synthesis into memory buffers.
<code>ttstst</code>	This is a sample program to demonstrate the Microsoft speech API interfaces supported by the DECtalk Software speech engine.

The sample programs are furnished as examples of simple Windows applications you can build, using the DECtalk Software API. The source code for the sample programs is placed in the root directory, `\DECTALK\SAMPLE\`, during the installation. These programs include the API definition file `ttsapi.h` and are linked with `dectalk.lib`.

Using the DECtalk Software Development Kit (the Win32 SDK must be installed):

1. Bring up a Windows console window.
2. Set your default directory to the `\DECTALK\SAMPLE\DTSSAMPLE` directory.
3. Enter **nmake**

This procedure produces the `dtssample.exe` executable file. This file can be executed at the Windows console window or the File Manager.

The `dtssample` program demonstrates most of the DECtalk Software API calls. Any application can call any of the API functions by including the `ttsapi` header file (`ttsapi.h`) and linking with the DECtalk Software library (`dectalk.lib`), as long as the associated dll file (`dectalk.dll`) is present. The `dectalk.dll` file must be installed and the dictionary file `dectalk.dic` must be in the dictionary path in the registry or in the local directory.

Chapter 4 — How to do Multi-Language Programming

Multi-language programming using DECtalk Software requires loading a DECtalk language, selecting a loaded language for a program thread, starting a TTS instance, closing the program thread, and closing that language. Swapping a language requires shutting down and closing the thread and the language selector. You can load as many languages as you want during the execution of your program as well as select two or more languages concurrently. The following steps summarize the methodology to start, select, and close a single language.

Note

You must start and select a language before using DECtalk Software to speak.

Multi-language programming is supported by the dynamic engine only. The static engine does not support multi-language programming.

The basic elements of multi-language programming are presented as follows:

- Starting a language
- Selecting a language
- Closing a language
- Multi-language programming example

Starting a Language

To start a DECtalk language , use the `TextToSpeechStartLang` call to pass the call the two-letter name of the language you want to load. After the language is loaded, you receive a handle to that language. If the language is already loaded, you get the previously loaded handle to that language as the return value. The same handle is used for all instances of a language per run. On failure, you receive a handle with the `TTS_LANG_ERROR` bit set as defined in `ttsfeat.h`

Example:

```
TextToSpeechStartLang ( "uk" )
```

Selecting a Language

Before a call can be made to any of the standard DAPI functions, and after you have the handle to a language, you must select the language. This is accomplished through the `TextToSpeechSelectLang` call. You must select the language before each call to any DAPI function that does not take in a valid `LPTTS_HANDLE_T` handle. The first parameter to `TextToSpeechSelectLang` must be `NULL`. The second parameter is the handle retrieved from `TextToSpeechStartLang`. The return value from `TextToSpeechSelectLang` is a Boolean value: `TRUE` signifies success and `FALSE` signifies failure.

Example:

```
TextToSpeechSelectLang ( NULL, UKhandle )
```

Closing a Language

After you close your program threads, use the `TextToSpeechCloseLang` call to close the language. This call accepts the two-character language name of the language to release and then attempts to release the language and its associated files. If other threads are still using the language, the `TextToSpeechCloseLang` call reduces the instance counter by one for that language. The file is free when all language hooks are freed.

Example:

```
TextToSpeechCloseLang ( "uk" )
```

Example

This example shows DECTalk ML allocating English (us), creating a thread, destroying the thread, and finally closing the language.

```
void sample(void) {
    unsigned long int UShandle;
    MMRESULT result;
    LPTTS_HANDLE_T phTTS;

    UShandle = TextToSpeechStartLang("us");
    if (UShandle & TTS_LANG_ERROR) {
        printf("Error loading US English\n");
        exit(1);
    }
    if (TextToSpeechSelectLang(NULL, UShandle) == FALSE) {
        printf("Error selecting language\n");
        TextToSpeechCloseLang("us");
        exit(1);
    }
    result = TextToSpeechStartup(hWnd, &phTTS, WAVE_MAPPER,
REPORT_OPEN_ERROR);
    if (result != MMSYSERR_NOERROR) {
        printf("Unable to start DECTalk Speech Engine\n");
        TextToSpeechCloseLang("us");
        exit(1);
    }
    TextToSpeechShutdown(phTTS);
    TextToSpeechCloseLang("us");
    printf("Example completed successfully!\n");
    return;
}
```


Glossary

allophone

A positional or free variant of a phoneme.

applet

A small application that normally performs a very specific function and can be used with other larger applications.

arpabet

A special phonetic alphabet used to write phonemes and syllables.

clause boundary

The natural boundary between two or more clauses in a sentence that helps the listener easily separate the sentence into its component parts. Commas, periods, exclamation points, question marks, semi-colons, and colons are symbols used to indicate clause boundaries.

clause mode

The normal mode in which DECTalk Software speaks text a phrase, clause, or sentence at a time. In clause mode, speaking starts when DECTalk Software is sent a clause terminator (period, comma, exclamation point, question mark, semi-colon, or colon) followed by a space.

clause terminator

A symbol used to begin and terminate a clause boundary. Symbols can be periods, commas, exclamation points, question marks, semi-colon, or colon. Each of these symbols must be followed by a space.

comma pause

The pause DECTalk Software takes in speaking that is equivalent to inserting a comma in a sentence. Comma pause can be increased and decreased with the Comma Pause in-line command.

.DIC file

The loadable dictionary file created by the User Dictionary Build Tool from a .tab source file.

dynamic engine

A text-to-speech engine that is accessed by applications as .lib files, using a dynamic link library (DLL). DLLs are software modules in Microsoft Windows operating environments that contain executable code and data that can be called and used by Windows applications or other DLLs. Functions and data in a DLL are loaded and linked at run time when they are referenced by a Windows application or other DLLs. DLLs can be unloaded when the code is no longer needed. The dynamic engine object code is not part of the application's executable code, except for runtime link references to the dynamic engine.

emphatic stress

The emphasis placed on a syllable of a word to give it more meaning.

falling intonation

A decrease in voice pitch.

flush

Process by which the Text-To-Speech system discards data in the system.

heuristic

A method or rule used to decide among several courses of action. Often called a "rule of thumb." In the case of DECtalk Software, pronunciation heuristics govern the manner in which DECtalk Software pronounces words.

homograph

A pair of words that have the same spelling but which are pronounced differently, depending on which syllable is accented. For example, the pronunciation of *permit* as a noun and the pronunciation of *permit* as a verb.

index marker (flag)

A marker placed in the text stream to synchronize an external event. An index marker is inserted with the **Index Mark** command.

intonation

The manner in which a voice imparts extra meaning to speech by adjusting sound durations and voice pitch. For example, the emphasis and meaning of the sentence, *Bill, put in the edits.* can be changed by putting stronger emphasis on the name, Bill. *Bill! Put in the edits!*

letter mode

The state in which DECTalk Software speaks each letter as it is queued. In word and letter mode, DECTalk Software does not need to wait for a clause terminator to begin speaking. This command interacts with the rate selection command so that you can set both rate selection and letter mode for optimal output.

log file

A file that can contain text, phonemes, or syllables. The phonemes and syllables are written using the arpabet phoneme alphabet.

log-file mode

Log-file mode indicates that the speech samples are to be written as text, phonemes, or syllables into a log file rather than sent to an audio device. The TextToSpeechOpenLogFile() call enters the text-to-speech system into a log-file mode. The TextToSpeechCloseLogFile() call returns the text-to-speech system to the startup state.

morpheme

The minimum syntactic unit of a language that has an important role in determining pronunciations. For example, *spell* has only one morpheme, while *misspelling* is made up of three: *mis*, *spell*, and *ing*.

period pause

The pause DECTalk Software inserts when it finds a period that marks the end of the sentence. This pause imitates humans taking a breath. This pause is approximately half a second.

phoneme

The smallest unit of speech that distinguishes one word from another. Phonemes are divided into vowel and consonant phonemes. DECTalk Software interprets text brackets as phonemes only after the phoneme arpabet command is used.

phoneme arpabet command

A command that causes all text within brackets to be treated as phonemic text.

phoneme string

Two or more phonemes together used to pronounce a special word or group of words.

phonemicize

To encode words as strings of phonemes.

phonemic mode

A mode DECtalk Software uses for speaking phoneme strings.

phonemic transcription

A word written the way it is pronounced is said to be in phonemic transcription or simply in phonemics. When DECtalk Software says a word or phrase not as you intended, you might need to use phonemic transcription to get the desired pronunciation. For example, *[r 'ehd]* is the phonemic transcription of the past tense verb *read*.

phrase boundary

A clause boundary formed by terminating punctuation (comma, period, exclamation point, question mark, semi-colon, colon) followed by a space.

pitch control symbols

Symbols used to override built-in DECtalk Software pitch control. Symbols include pitch rise [/], pitch fall [\], and pitch rise and fall [^].

primary stress

Most content words of English (nouns, verbs, adjectives, and adverbs) contain one primary stressed syllable. The primary stress symbol in DECtalk Software is the apostrophe ['].

proper name

First names, last names, street names, company names, and place names are all examples of proper names.

secondary stress

A symbol used to indicate a degree of stress that is between primary and unstressed (no stress). The secondary stress symbol is the grave accent [`].

silence phonemes

Silences of specified durations inserted into text files in the same manner as you would insert a phoneme.

speech-to-memory mode

Speech-to-memory mode indicates that the speech samples are to be written into memory buffers rather than sent to an audio device. The `TextToSpeechAddBuffer` call supplies the text-to-speech system with the memory buffers that it needs. The `TextToSpeechOpenInMemory` call enters the text-to-speech system into a speech-to-memory mode. The `TextToSpeechCloseInMemory` call returns the text-to-speech system to the startup state.

startup function

Startup function refers to either the `TextToSpeechStartup` call or the `TextToSpeechStartupEx` call.

startup state

Startup state indicates that `TextToSpeechStartup` or `TextToSpeechStartupEx` has been successfully called and the text-to-speech system is *not* in one of the three special modes; wave-file, log-file, or speech-to-memory mode. While in startup state, speech samples are sent to an audio device or ignored, depending on whether the `DO_NOT_USE_AUDIO_DEVICE` flag is set in the `dwDeviceOptions` parameter of the startup function. If the text-to-speech system is in one of its special modes, the speech samples are handled accordingly.

static engine

A text-to-speech engine that is accessed by applications as .lib files without using dynamic link libraries (DLLs). The static engine object code is part of the application's executable code. See also **dynamic engine**.

syntactic function words

A set of words that are either unstressed or have secondary stress. They include prepositions, conjunctions, determiners, auxiliary verbs, pronouns, question mark, and clause introducers. DECtalk Software uses stress and syntactic symbols to control aspects of rhythm, stress, and intonation patterns. These symbols include punctuation marks such as commas, periods, question marks, and exclamation points.

.TAB file

The source file used to build a user dictionary.

user dictionary

The dictionary that you define for DECtalk Software to load and use with an application to control the pronunciation of specific words processed by the application.

user dictionary builder

A program applet included with DECtalk Software to build and compile user dictionaries.

voice-control command

A DECtalk Software command inserted into text strings and used to control basic and special Text-To-Speech calls, such as speaking voice and speaking rate.

Wave file

A Microsoft standard file format for storing waveform audio data. Wave files have a .WAV file extension.

wave form output

The digitized reproduction of a sound wave form. DECtalk Software produces waveform output from the Speak program applet and the API, both of which allow you to save an ASCII text file to .WAV file format.

wave-file mode

Wave-file mode indicates that the speech samples are to be written to a wave file rather than sent to an audio device. The TextToSpeechOpenWaveOutFile call enters the text-to-speech system into a wave-file mode. The TextToSpeechCloseWaveOutFile call returns the text-to-speech system to the startup state.

word boundary

A white space character (space or tab) in the text that indicates a boundary between words. DECtalk Software uses word boundary symbols to select the word-beginning or word-ending allophone of a phoneme.

word mode

A text-processing mode where DECtalk Software speaks one word at a time. A blank space or equivalent after a character or string of characters causes that string to be spoken in word mode.

.

.dic file, 2-10, 2-15

.dot (template) file, 2-21

.tab source file, 2-13, 2-15

A

API

- function set, 1-6
- introduction, 1-6

application program, 2-1

application programming interface, 1-6

arpabet phoneme alphabet, 3-17

ASCII text, 1-2

audio output control functions, 3-2

B

blocking synchronization function, 3-2, 3-14

buffer, 3-10

buffered speech, 3-10

built-in voices, 2-17

button on a toolbar, 2-24

C

callback parameters, 3-6

callback routines, 3-6

change a speaking voice, 2-6

change the output rate, 2-9

change the speaking rate, 2-18

clause, 3-5

clause buffering, 1-2

clause terminator, 3-5

close a DECTalk language, 4-2

command strings, 1-2

command-line applet, 2-30

compiling an existing dictionary, 2-16

configure the TTS server, 2-26

configuring

- Text-to-Speech (TTS) server, 2-26

control and status functions, 3-2

core API functions, 3-2

create a macro, 2-24

creating Dictionary Entries, 2-14

D

DAPI, 1-6

DAPI function, 4-2

data buffers, 1-6

data-structure definitions, 3-30

DDE. . See Dynamic Data Exchange

DECTalk

- features and functions, 1-2
- how are the components used?, 1-9
- how it works, 1-11
- overview, 1-2

DECTalk language. *See* language

DECTalk Software API (DAPI), 1-6, 3-1

DECTalk Software components, 1-3

DECTalk Software voice set, 2-17

DECTalk TTS Server, 2-20

DECTalk_Visual_Message, 3-6

definitions, data-structure, 3-30

dictionaries, 1-7, 1-8

dictionary applets, 3-21

dictionary file (.dic), 2-10

dictionary file string, 2-26

Dictionary options, 2-31

DECTalk Speech API. *See* DECTalk Software API (DAPI)

drag and drop, 2-3

dwFlags field, 3-16

dwLanguageAttributes element, 3-19

Dynamic Data Exchange

and DECTalk, 2-20

Dynamic Data Exchange (DDE), 2-20

dynamic engine, 3-23, 4-1

E

edit a text file, 2-18

edit text, 2-8

edit the text, 2-9

error and status messages, 3-9

error codes, 3-9

F

functions

audio output control, 3-2

blocking synchronization, 3-2, 3-14

control and status, 3-2

core API, 3-2

loading and unloading a User Dictionary, 3-3

special Text-to-Speech mode, 3-3

H

header files, 3-30

Help options, 2-30

highlighting spoken text, 2-19

how to link the macro, 2-24

I

index and phoneme arrays, 3-20

Index Mark in-line command, 3-14

index marks, 3-10

in-line command

examples of, 2-4

Index Mark, 3-14

syntax rules, 2-4

in-line commands, 1-6

Input options, 2-30

internal (built-in) dictionary, 1-7

intonation, 1-7

L

language

close, 4-2

load, 4-2

name, 4-2

select, 4-2

start, 4-2

languages, 3-30

launching

Text-to-Speech (TTS) server, 2-26

link the macro, 2-24

load a user dictionary, 2-18

loadable dictionary file (.dic), 2-10

loading a User Dictionary function, 3-3

log file, 3-16

LPARAM parameter, 3-9, 3-10

lpData element, 3-17

lpIndexArray element, 3-17

lpLanguageParamsArray element, 3-19

lpPhonemeArray element, 3-17

M

macro, 2-28

macro to run DECTalk with MS Word

associating with toolbar, 2-24

main dictionary, 3-21, 3-23

memory buffer, 3-10

menu selection, 2-24

messages, 3-9

Microsoft Speech API (SAPI), 1-6

Microsoft Word document, 2-20, 2-21

modifying Dictionary Entries, 2-14

multi-language programming, 4-1

N

name, language, 4-2

O

options

Dictionary, 2-31

Help, 2-30

Input, 2-30

Output, 2-30

Output options, 2-30

P

parameters

callback, 3-6

message, 3-6

phoneme alphabet, 3-17

Phoneme command

proper use of brackets with, 2-5

phoneme logging, 3-17

phoneme notifications, 3-6

PHONEME_TAG, 3-6

phonemic interpretation, 3-21

play selected segments, 2-18

play selected text, 2-9

power-key combination, 2-24

program applet

Sample, 1-3, 2-1

Speak, 1-5, 2-1, 2-17

User Dictionary Build Tool, 2-1

program control, 2-1

programming aids, 1-6

programming, multi-language, 4-1

pronunciation, 2-13

pronunciation dictionaries, 1-7, 1-8

pull-down menu, 2-6

punctuation, 3-5

R

returned memory buffer, 3-10

rhythmic naturalness, 1-2

S

Sample program applet, 1-3, 2-1

starting from program group, 2-2

sample user-dictionary file, 1-8

SAPI, 1-6

save as a WAVE file, 2-18

saving an existing dictionary, 2-16

Say command-line applet, 2-30

select a DECTalk language, 4-2

service name, TTSServer, 2-26

service topic names, 2-26

singing, 1-7

single characters, 1-2

Speak program applet, 1-5, 2-1, 2-17

speaker selection, 2-26

speaking a file, 2-3

speaking rate, 1-6, 2-18, 2-26

speaking voice, 1-6, 2-26

special effects, 1-7

special Text-to-Speech mode functions, 3-3

special words, 2-13

speech synthesis, 1-2

start a DECTalk language, 4-2

start the program applet, 2-2

start the TTS server, 2-26

startup routine, 3-16

static engine, 3-24, 4-1

status functions, 3-2

status messages, 3-9

stress, 1-7

structure

TTS_BUFFER_T, 3-17

TTS_CAPS_T, 3-19

TTS_INDEX_T, 3-18

TTS_PHONEME_T, 3-18

supported languages, 3-30

Sync in-line command, 3-5

syntax

for in-line commands, 2-4

syntax rules, 1-7

T

template, 2-21

text file, 2-18

- inserting commands into, 2-4

Text-to-Speech server

- configuring, 2-26

- for use with applications supporting DDE, 2-20

TextToSpeechSpeak, 3-6

toolbar, 2-24

- associating Word macro with, 2-24

TTS server, 2-26, 2-28. See Text to Speech server

- how to configure, 2-26

- how to start, 2-26

TTS Server, 2-20

TTS server macro, 2-28

TTS service name, 2-26

TTS_BUFFER_T structure, 3-17

TTS_CAPS_T structure, 3-19

TTS_INDEX_T structure, 3-18

TTS_PHONEME_T structure, 3-18

ttsapi.h file, 3-9

U

unloading a User Dictionary function, 3-3

user dictionary, 2-13, 2-18

user dictionary build tool, 1-6, 1-7

User Dictionary Build Tool, 2-10, 2-13

User Dictionary Build Tool program applet, 2-1

User dictionary selection, 2-26

user-defined dictionary, 1-7

using DECTalk Software in-line commands, 2-7

using the Voice menu, 2-7

V

voice control, 2-1

Voice pull-down menu, 2-6

voice set, 2-17

voice-control commands, 1-6, 1-7

voices, 1-2, 2-17

W

WAVE file, 2-18

window messages, 3-6

Word document, 2-20, 2-21

Word macro, 2-21, 2-26

Word macro to run DECTalk

- associating with toolbar, 2-24

- creating, 2-21

WPARAM parameter, 3-9

