



---

# **ATI Multimedia Center™**

## **User's Guide**

P/N 137-71022-10

Copyright © 2005, ATI Technologies Inc. All rights reserved.

ATI, the ATI logo, and ATI product and product-feature names are trademarks and/or registered trademarks of ATI Technologies Inc. All other company and/or product names are trademarks and/or registered trademarks of their respective owners. Features, performance and specifications are subject to change without notice. Product may not be exactly as shown in diagrams.

Reproduction of this manual, or parts thereof, in any form, without the express written permission of ATI Technologies Inc. is strictly prohibited.

## **Disclaimer**

While every precaution has been taken in the preparation of this document, ATI Technologies Inc. assumes no liability with respect to the operation or use of ATI hardware, software or other products and documentation described herein, for any act or omission of ATI concerning such products or this documentation, for any interruption of service, loss or interruption of business, loss of anticipatory profits, or for punitive, incidental or consequential damages in connection with the furnishing, performance, or use of the ATI hardware, software, or other products and documentation provided herein.

ATI Technologies Inc. reserves the right to make changes without further notice to a product or system described herein to improve reliability, function or design. With respect to ATI products which this document relates, ATI disclaims all express or implied warranties regarding such products, including but not limited to, the implied warranties of merchantability, fitness for a particular purpose, and non-infringement.

## **Product Notices**

Dolby® Laboratories, Inc.

Manufactured under license from Dolby® Laboratories. Dolby and the double-D symbol are trademarks of Dolby Laboratories. Confidential Unpublished Works.  
© 1992-1997 Dolby Laboratories, Inc. All rights reserved.

## **Macrovision**

Apparatus Claims of U.S. Patent Nos. 4,631,603, 4,577,216, 4,819,098, and 4,907,093 licensed for limited viewing uses only.

This product incorporates copyright protection technology that is protected by method claims of certain U.S. patents and other intellectual property rights owned by Macrovision Corporation and other rights owners. Use of this copyright protection technology must be authorized by Macrovision Corporation, and is intended for home and other limited viewing uses only unless otherwise authorized by Macrovision Corporation. Reverse engineering or disassembly is prohibited.

## **Documentation Updates**

ATI is constantly improving its product and associated documentation. To maximize the value of your ATI product, you should ensure that you have the latest documentation. ATI's documentation contains helpful installation/configuration tips and other valuable feature information.

# Contents

<b>Using the ATI Multimedia Center™</b> .....	<b>7</b>
Starting ATI Multimedia Center™	7
<i>Using the ATI Multimedia Center™ LaunchPad</i>	7
Using ATI Multimedia Center™ Configuration	9
<i>Changing ATI Multimedia Center™ Skins</i>	13
<b>EazyLaunch™</b> .....	<b>17</b>
Using EazyLaunch™ with Remote Wonder™	18
<b>FM Radio</b> .....	<b>21</b>
FM Radio Settings	22
Radio Tab	22
FM-on-Demand™ Tab	26
<i>Schedule FM Radio</i>	28
Recording Using FM-on-Demand™	30
FM Radio Playback	31
Setting Preset Stations	32
Alarm Settings	32
Mute Functionality	33
FM Radio Feature Menu	33
FM Radio Keyboard Shortcuts	34
<b>CD Audio</b> .....	<b>37</b>
<i>Settings Tab</i>	39
Creating a Play List	40
<i>Preferences Tab</i>	41
<i>Schedule Tab</i>	42
CD Audio Keyboard Shortcuts	45
<b>File Player</b> .....	<b>47</b>
Setting up the File Player	49
<i>Display Tab</i>	49
<i>Preferences Tab</i>	51
<i>Slide Show Tab</i>	52
<i>Closed Caption Tab</i>	54
<i>Stills Gallery Tab</i>	56

<i>Schedule Tab</i>	58
Using File Player	61
<i>Playing Files</i>	62
<i>File Player Keyboard Shortcuts</i>	63
<b>Video CD.....</b>	<b>65</b>
<i>Display Tab</i>	66
<i>Preferences Tab</i>	68
<i>Closed Caption Tab</i>	69
<i>Stills Gallery Tab</i>	71
<i>Schedule Tab</i>	73
Video CD Feature Menu	77
Video CD 2.0 Menu	79
Video CD Keyboard Shortcuts	80
<b>TV.....</b>	<b>83</b>
Setting up TV	86
Display Tab	87
Using the Initialization Wizard	89
Picture Tab	91
Channel List Tab	92
Closed Caption Tab	96
Setting up HotWords™	97
Using TV Magazine™	101
Digital Video Recorder Tab	105
Stills Gallery Tab	109
Schedule Tab	111
Audio Tab	113
Using the TV Dashboard	115
TV-on-Demand™	117
TV Out	119
Multi-Monitor Support	120
Using MultiView™	120
TV Keyboard Shortcuts	122
MultiView™ Keyboard Shortcuts	123

<b>DVD.....</b>	<b>125</b>
DVD Setup	126
Display Tab	127
Preferences Tab	128
Audio Tab	131
Closed Caption Tab	133
Advanced Aspect Ratio Tab	135
Stills Gallery Tab	136
Schedule Tab	138
Playing DVD	139
<i>Accessing DVD Menus</i>	140
<i>Selecting Audio Channels</i>	140
<i>Accessing Multiple Viewing Angles</i>	140
<i>Mute Functionality</i>	141
<i>Using Subtitles, Closed Captions, and External Captions</i>	141
<i>The “Jump To” Function</i>	142
<i>Using the Restart Function</i>	143
<i>Menu Up</i>	143
<i>Zooming and Panning</i>	143
<i>Parental Control</i>	144
<i>A/B Repeat</i>	145
<i>Capturing Still Frames</i>	145
<i>Ejecting the DVD</i>	145
<i>Sizing the Video Display Panel</i>	146
<i>Using THRUVIEW™</i>	146
<i>Chapter Preview</i>	147
<i>DVD Initialization Wizard</i>	147
<i>Bookmarks and Chapter Preview</i>	147
<i>DVD Feature Menu</i>	148
<i>Full-Screen Controls</i>	149
<i>Region Codes</i>	150
<i>S/PDIF</i>	150
DVD Keyboard Shortcuts	151
 <b>EazyConnect™ .....</b>	 <b>153</b>
Setting up an EazyConnect™ Server	153
Setting up an EazyConnect™ Client	156
 <b>Using the ATI Multimedia Center™ Library ...</b>	 <b>159</b>
Creating DVDs and CDs	165



# Using the ATI Multimedia Center™

The ATI Multimedia Center™ is a suite of software applications. You can watch TV broadcasts or view video from video CDs, DVDs, or files on your computer. You can also listen to FM radio or music on CD or your hard drive. There are dozens of special features, such as EazyConnect™ software which enables TV on your home network, and the ATI Multimedia Center™ Library which helps you manage your multimedia files and burn sound and video onto CDs and DVDs.

## Starting ATI Multimedia Center™

There are several ways to start ATI Multimedia Center™ on your system. This section outlines the various ways it can be launched.

### Using the ATI Multimedia Center™ LaunchPad

The LaunchPad provides a convenient way to start all your ATI Multimedia Center™ features. When you install the ATI Multimedia Center™ software, LaunchPad opens automatically when you start your computer.



If you do not want LaunchPad to open automatically, you can right-click anywhere on LaunchPad and, in the shortcut menu, clear the Load on Startup option.

Use LaunchPad to:

- Start an ATI Multimedia Center™ feature.
- Access the ATI Multimedia Center™ Configuration dialog.
- Get help on using ATI Multimedia Center™.
- Close the ATI Multimedia Center™ LaunchPad.

The combination of ATI Multimedia Center™ features available in the LaunchPad depends on the number and type of video cards installed on your system. For example, if your system does not have a TV tuner, Video In appears in place of TV in the LaunchPad.

Some of the ATI Multimedia Center™ features use the same system resources. If you try to start one of these features while another is running, a resource conflict message appears.

When a conflict message appears, you can choose to:

- Run both features with reduced performance (where possible).
- Suspend the first feature while the other is active.
- Close the first feature.
- Press Cancel to continue without starting the second feature.

### ***Dock LaunchPad***

- 1 Right-click **LaunchPad**.
- 2 In the shortcut menu, click **Dock**. The LaunchPad docks to your Windows® Taskbar.
- 3 To change the docking position, right-click LaunchPad while it is docked.
- 4 In the shortcut menu, click **Side**.
- 5 In the submenu choose from the following desktop locations:
  - **Top**
  - **Left**
  - **Right**
  - **Bottom**

### ***Change the LaunchPad size***

When LaunchPad is not docked do one of the following:

- Double-click LaunchPad. Launchpad changes size.

Or

- 1 Right-click LaunchPad.
- 2 In the shortcut menu, choose **Size**.
- 3 In the submenu choose one of the following:
  - **Large**
  - **Small Row**
  - **Small Column**

### ***Start Multimedia applications from the Windows® Taskbar***

- 1 In the Windows taskbar, click **Start**.
- 2 In the Windows **Start menu**, open the **All Programs** list and choose **ATI Multimedia Center**.



**3** In the **ATI Multimedia Center** submenu, choose one of the following:

- **ATI Remote Wonder**
- **CD Audio**
- **Configuration**
- **DVD**
- **File Player**
- **FM**
- **LaunchPad**
- **Media Player**
- **TV**
- **Video CD**
- **Library**

## Using ATI Multimedia Center™ Configuration

You configure the ATI Multimedia Center™ through the ATI Multimedia Center™ Configuration dialog. The Configuration dialog provides settings for:

- **Audio/Video**
- **TV**
- **FM Radio**
- **EazyLook™**
- **EazyConnect™**
- **Skins**
- **File Types**

You can use the ATI Multimedia Center™ Configuration dialog to:

- Modify settings that do not change regularly.
- Change settings and run diagnostics when the Multimedia Center is not running.
- Modify advanced settings that should only be changed if absolutely necessary.

### ***Open ATI Multimedia Center™ Configuration dialog from LaunchPad***

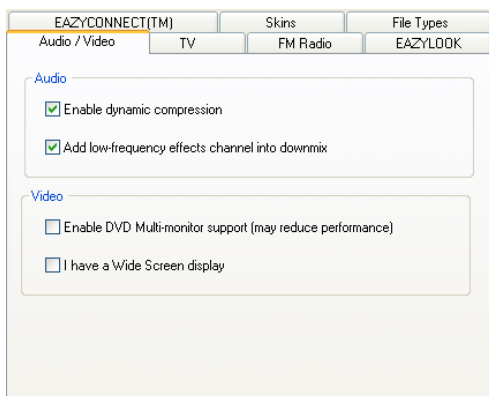
- On the **ATI Multimedia Center™ Launchpad**, click the **Multimedia Center Configuration** button.

### ***Open ATI Multimedia Center™ Configuration from the Windows® Taskbar***

- 1 In the Windows® taskbar, click **Start**, and select **All Programs**.
- 2 In the All Programs menu, choose **ATI Multimedia Center**, and select **Configuration**.

### ***Access Audio/Video settings***

- On the ATI Multimedia Center™ Configuration dialog, click the **Audio/Video** tab.



---

**ATI Multimedia Center™ Configuration: Audio Video settings**

---

The following audio and video settings are available:

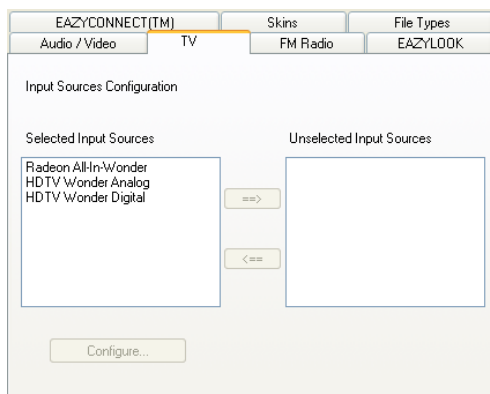
Option	Function
<b>Audio</b>	
Enable Dynamic Compression	Applies dynamic compression to the overall dynamic range of the audio (useful for low-volume listening and for smaller speakers).
Add low-frequency effects channel into downmix	Encodes the 2-channel stereo output with Dolby® Pro Logic information (used for external Dolby® Pro Logic decoder/amplifier).
<b>Video</b>	
Enable DVD Multi-monitor support (may reduce performance)	Enables support for multiple monitors.
I have a Wide Screen display	Enables wide screen capability.



The Multimedia Center supports standard DVD-Video, which provides stereo and compressed, multi-channel surround sound using Dolby® Digital or DTS® encoding. DVD-Audio (DV-A) is a separate standard, which requires a DVD-Audio player.

## Access TV settings

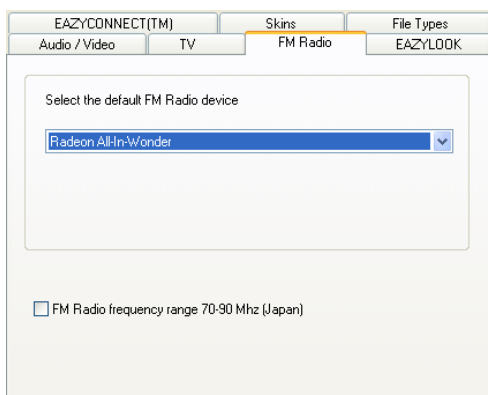
- On the ATI Multimedia Center™ Configuration dialog, click the **TV** tab.



### ATI Multimedia Center™ Configuration: TV settings

## Access FM Radio settings

On the ATI Multimedia Center™ Configuration dialog, click the **FM Radio** tab.



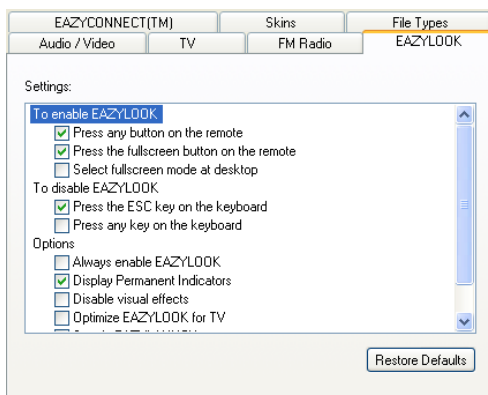
---

**ATI Multimedia Center™ Configuration: FM Radio settings**

---

## Access EasyLook™ settings

On the ATI Multimedia Center™ Configuration dialog, click the **EasyLook™** tab.



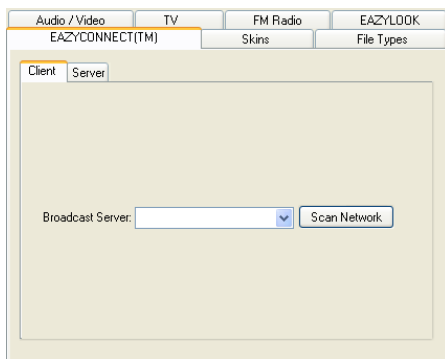
---

**ATI Multimedia Center™ Configuration: EasyLook™ settings**

---

## Access EazyConnect™ settings

On the ATI Multimedia Center™ Configuration dialog, click the **EazyConnect™** tab.



---

**ATI Multimedia Center™ Configuration: EazyConnect™ settings**

---

## Changing ATI Multimedia Center™ Skins

The Skins tab provides different ATI Multimedia Center™ user interfaces. Skins provide the same controls arranged in different ways to suit your taste and style.

### Access Skins settings

On the ATI Multimedia Center™ Configuration dialog, click the **Skins** tab.



---

**ATI Multimedia Center™ Configuration: Skins settings**

---

### ***Change your Skins settings***

- 1 On the ATI Multimedia Center™ Configuration dialog, click the **Skins** tab.
- 2 In the **Features** pane, choose the ATI Multimedia Center™ application for which you want to change skins.
- 3 In the **Available Skins** pane, select a skin.

The following



---

Multimedia Center: Modern Skin

---



---

Multimedia Center: Classic Skin

---



---

Multimedia Center: Tranquility Skin

---



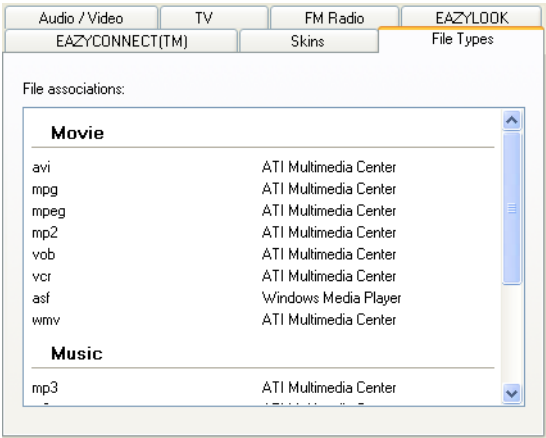
---

Multimedia Center: Zero-G Skin

---

**Access File Types**

- On the ATI Multimedia Center™ Configuration dialog, click the **File Types** tab. The File Types page displays the file types associated with your ATI Multimedia Center™ applications.



**ATI Multimedia Center™ Configuration: File Types settings**





# EazyLaunch™

EazyLaunch™ lets you start Windows in EazyLook™ mode so you can quickly launch Multimedia Center features. In EazyLook™ mode you can use your Remote Wonder™ or your Remote Wonder™ II with full-screen video.

When you start Windows in EazyLook™ mode, the EazyLaunch™ menu screen appears when you start your computer. In the EazyLaunch™ menu screen, the icon for the last feature you launched is indicated in the center of the EazyLook™ screen. You can use your keyboard or your Remote Wonder™ and Remote Wonder™ II to open ATI Multimedia Center™ features.



Some programs in your Startup Group (for example, virus scanners and fire walls) may not run when you start in EazyLaunch™ mode.



---

**EazyLaunch™ menu screen**

---

## Start Windows in EazyLook™ mode



To be sure all available ATI Multimedia Center™ features appear in the EazyLaunch™ menu screen, you should configure all ATI Multimedia Center™ features before enabling EazyLaunch™.

- 1 On the ATI Multimedia Center™ LaunchPad, click the **Multimedia Center** command button. The ATI Multimedia Center™ Configuration dialog box opens.
- 2 Click the **EazyLook™** tab.
- 3 In the Options Settings, check the **Start in EazyLaunch™** option.
- 4 Click **OK**. The next time you start Windows the EazyLaunch™ screen will open automatically after you log on.

## Select a Feature from the EazyLaunch™ menu screen

- 1 With your system in EazyLook™ mode, log on to Windows. The EazyLook™ menu screen opens.
- 2 On your keyboard, scroll through the EazyLaunch™ menu screen using your Left or Right arrow keys.
- 3 When the command button for the feature you want appears in the center of your screen, press **Enter**. The feature opens on your desktop.

## Return to desktop mode

- While in EazyLook™, press **Esc**.

# Using EazyLaunch™ with Remote Wonder™

EazyLaunch™ starts from your desktop using a Remote Wonder™ or a Remote Wonder™ II. Once the system is configured to start in EazyLook™ mode, the EazyLaunch™ screen appears when you log on to Windows. The EazyLaunch™ screen also appears when you press the ATI button on the Remote Wonder™ II, or click a programmed EazyLaunch™ button on the Remote Wonder™.

### ***Start EazyLaunch™ with Remote Wonder™***

- On the Remote Wonder™, assign one of the programmable buttons to start EazyLaunch™ from your Windows desktop.



We suggest the A button because it is close to the other feature buttons. For more information, see your Remote Wonder™ Guide.

### ***Start EazyLaunch™ with Remote Wonder™ II***

- On the Remote Wonder™ II, press the ATI button to start EazyLaunch™ from your Windows desktop. For more information, see your Remote Wonder™ II Guide.

### ***Launch a feature using your keyboard***

- 1 In the EazyLaunch™ menu screen use the Left and Right arrow keys to choose the feature you want to open.
- 2 Press **Enter**. The ATI Multimedia Center™ feature starts.

### ***Launch a feature using a Remote Wonder™***

- 1 Use the Remote Wonder™, buttons to select the feature you want to launch.
- 2 On the Remote Wonder™, press a programmed EazyLaunch™ command button. For more information, see your Remote Wonder™ users guide.

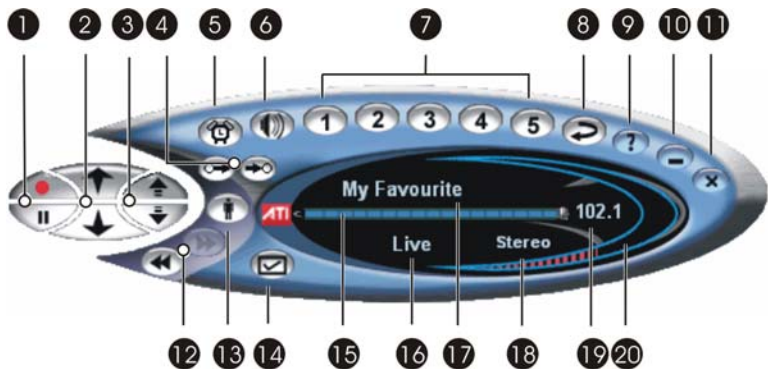
### ***Launch a feature using a Remote Wonder™ II***

- 1 Use the Remote Wonder™ II, buttons to select the feature you want to launch.
- 2 On the Remote Wonder™ II, press the **ATI** button. For more information, see your Remote Wonder™ II users guide.



# FM Radio

FM Radio is a full-function FM tuner providing programmable preset stations and station seeking, plus advanced features such as recording to MP3 format, FM-on-Demand™ (time-shifted audio), and scheduled recording.



FM Radio Dashboard	
1	Record + Pause/Play
2	Tune Up / Tune Down
3	Scan Up / Scan Down
4	Set Start Marker / Set End Marker
5	Alarm Settings
6	Mute
7	Preset Stations (1 - 5 and 6 - 10)
8	Show Preset Stations
9	Help
10	Minimize
11	Exit
12	Skip Back / Skip Forwards
13	Playback Speed

<b>FM Radio Dashboard</b>	
<b>14</b>	Setup
<b>15</b>	Playback Position
<b>16</b>	Time Mode Display
<b>17</b>	Station Name (User Defined)
<b>18</b>	Stereo / Mono Indicator
<b>19</b>	Currently Tuned Frequency
<b>20</b>	Volume

### ***Start FM Radio from LaunchPad***

- Click the **FM Radio** button in the LaunchPad.

### ***Start FM Radio from the Windows® taskbar***

- 1** In the Windows taskbar, click **Start**, and then point at **Programs**.
- 2** Point at **ATI Multimedia Center**, and then select **FM**.

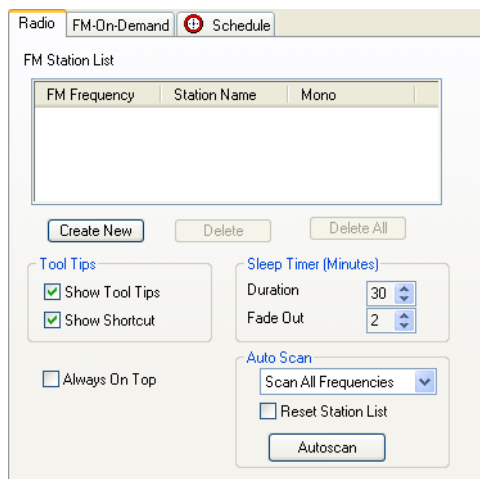
You can also start FM Radio from other Multimedia Center features installed on your system. Click the ATI logo in the feature's control panel or display panel, and then click **FM**.

## **FM Radio Settings**

Many settings are available that allow you to easily scan and edit settings for available radio stations, configure FM-on-Demand™, and schedule the automatic recording of your favourite radio shows.

## **Radio Tab**

The Radio tab allows you to scan for FM radio stations available in your broadcast area, as well as directly adding, modifying, or deleting station listings. In addition, from this dialog you can also set the sleep timer, plus the visibility of Tool Tips and whether FM Radio should always remain on top of other Windows® applications.



---

### FM Radio: Radio Tab

---

#### ***Add a radio station to the FM Station List***

- 1 In the FM Radio dashboard, click the **Setup** button, or press **Ctrl + S**.
- 2 Select the **Radio** tab.
- 3 Click **Create New**. The currently selected radio station is added to the list.

Alternately you can right-click in the FM Station List and choose **Add a new station to the list**.

#### ***Delete a radio station from the FM Station List***

- 1 In the FM Radio dashboard, click the **Setup** button, or press **Ctrl + S**.
- 2 Select the **Radio** tab. Select the radio station to delete.
- 3 Click **Delete**, or press **Del**. The currently selected radio station is deleted from the list.

Additionally, you can right-click in the FM Station List and choose **Delete the selected station from the list**.

#### ***Delete all radio stations from the FM Station list***

- 1 In the FM Radio dashboard, click the **Setup** button, or press **Ctrl + S**.
- 2 Select the **Radio** tab.

- 3 Click **Delete All**. All radio stations are deleted from the list.

### ***Name a radio station in the FM Station list***

- 1 In the FM Radio dashboard, click the **Setup** button, or press **Ctrl + S**.
- 2 Select the **Radio** tab.
- 3 Click under the **Station Name** column for the selected FM Frequency, or press **F3**.  
Additionally, you can right-click in the FM Station List and choose **Edit the name of the current station**.
- 4 Enter the name or callsign for the selected radio station.

### ***Force a radio station to mono/stereo in your FM Station list***

- 1 In the FM Radio dashboard, click the **Setup** button, or press **Ctrl + S**.
- 2 Select the **Radio** tab.
- 3 Click under the **Mono** column for the selected FM Frequency. Or press **F4**. It will toggle to Mono if Stereo was set, or Stereo if it was set to Mono.  
Alternately, you can right-click in the FM Station List and choose **Toggle Forced Mono**.

### ***Turn off tool tips***

By default, tool tips are available when you hover over a function with your mouse in FM Radio. To turn them off, do the following:

- 1 In the FM Radio dashboard, click the **Setup** button, or press **Ctrl + S**.
- 2 Select the **Radio** tab.
- 3 Uncheck **Show Tool Tips**. Tool tips are now disabled.

### ***Turn off keyboard shortcut visibility***

By default, keyboard shortcuts are displayed alongside the description of an individual tool tip. To turn them off, do the following:

- 1 In the FM Radio dashboard, click the **Setup** button, or press **Ctrl + S**.
- 2 Select the **Radio** tab.
- 3 Uncheck **Show Shortcut**. The keyboard shortcuts will no longer appear alongside the tool tips.



### ***Use the Sleep Timer***

The Sleep Timer sets the fade out duration.

- 1 In the FM Radio dashboard, click the **Setup** button, or press **Ctrl + S**.
- 2 Select the **Radio** tab.
- 3 Set the length to record in the **Duration** spin box.
- 4 Set the length that the recording should fade out in the **Fade Out** spin box.

### ***Have FM Radio appear above all other Windows® programs***

By default FM Radio can be overlaid with other running Windows® programs. To change this behavior, do the following:

- 1 In the FM Radio dashboard, click the **Setup** button, or press **Ctrl + S**.
- 2 Select the **Radio** tab.
- 3 Check **Always on Top**.

### ***Use Auto Scan***

Auto Scan can be used to automatically seek and list all available radio stations. To use Auto Scan, do the following:

- 1 In the FM Radio dashboard, click the **Setup** button, or press **Ctrl + S**.
- 2 Select the **Radio** tab.
- 3 To scan odd-numbered frequencies, select **Scan Odd Frequencies** (default) from the drop-down menu.

To scan even-numbered frequencies, select **Scan Even Frequencies** from the drop-down menu.

To scan both odd- and even-numbered frequencies, select **Scan All Frequencies**.

- 4 To reset and replace any existing stations currently listed in the FM Station List, check **Reset Station List**. Otherwise, any new radio station will be added to the existing list.
- 5 Click **Autoscan** to start scanning. New radio stations are added to the FM Station List when found.

## FM-on-Demand™ Tab

The FM-on-Demand™ tab enables users to configure One Touch Recording settings and the total amount of disk space to allocate towards FM-on-Demand™ recordings. It also displays the type of recording format being used.

Pause a live broadcast, return later, and resume listening where you left off. You can listen to a program from the beginning, even after it has already started, without waiting until the whole program is recorded.

You can quickly back up a program, listen to the selected portion again, and fast-forward or skip ahead to the live broadcast. You can also export the recorded audio to the Library as an MP3 file for later playback.

The One Touch Recording Settings allow you to preset the configuration, the length of recordings, the folder in which recordings are stored, and the the style of file name used to identify each file when the record button is clicked. The FM-on-Demand™ settings provide the means to set the total amount of hard-drive space to allocate to such recordings, and the location where the temporary files are stored while a recording is taking place.



You cannot change the type of recording format or its quality.

### ***Set the customized recording duration for One Touch Record***

- 1 In the FM Radio dashboard, click the **Setup** button, or press **Ctrl + S**.
- 2 Select the **FM-on-Demand™** tab.
- 3 Click the **One Touch Record Setting** button.
- 4 Use the **Record for** spin box to change the selected number to the recording duration desired. Or input the number values directly.

### ***Set the length of a One Touch Recording***

- 1 In the FM Radio dashboard, right-click the **Record** button.
- 2 From the drop-down menu, select **Record For**.
- 3 From the sub-menu, select any one of the following options: **5 Minutes**, **15 Minutes**, **30 Minutes** or **60 Minutes**.

Default settings for One Touch Recording duration can be set using from the **Setup** dialog.

### ***Record a block of time using One Touch Recording***

- 1 In the FM Radio dashboard, right-click the **Record** button.
- 2 From the drop-down menu, select **Record Until**.
- 3 From the sub-menu, select a block of time for the next half-hour increment, the next hour increment, or the next two-hour increment.

### ***Set the folder for One Touch Record files***

- 1 In the FM Radio dashboard, click the **Setup** button, or press **Ctrl + S**.
- 2 Select the **FM-on-Demand™** tab.
- 3 Click the **One Touch Record Setting** button.
- 4 The folder for the recorded file is displayed. Click the **Browse** button to change this setting.

### ***Set the recorded file name for One Touch Record files***

- 1 In the FM Radio dashboard, click the **Setup** button, or press **Ctrl + S**.
- 2 Select the **FM-on-Demand™** tab.
- 3 Click the **One Touch Record Settings** button.
- 4 Use the **Style** drop-down menu to select the default type of file name for any One Touch Record files that are created.

If **User Defined** is chosen from the drop-down menu, a field appears allowing the user to enter a name of their choosing.

### ***Change the drive for storing temporary recording files***

- 1 In the FM Radio dashboard, click the **Setup** button, or press **Ctrl + S**.
- 2 Select the **FM-on-Demand™** tab.
- 3 Click the **Drive to use for Temporary File** drop-down menu to select the drive letter. Currently available space is displayed alongside the drive letter.

### ***Set the maximum hard-drive space to allocate for recording***

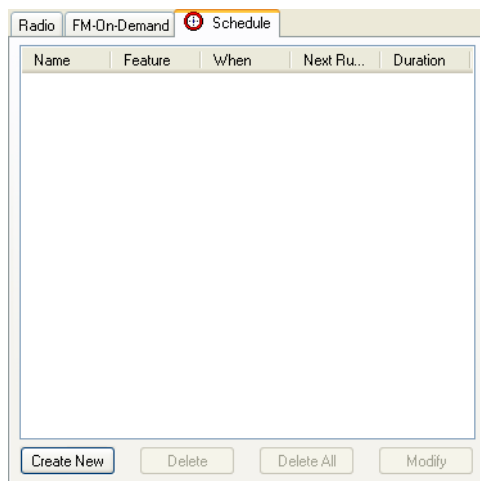
- 1 In the FM Radio dashboard, click the **Setup** button, or press **Ctrl + S**.
- 2 Select the **FM-on-Demand™** tab.
- 3 Use the **Maximum Space to Allocate on Drive** slider to set the maximum value. The amount of drive space is displayed in megabytes or gigabytes, along with the number of minutes available to record.



When this setting is changed, any current FM-on-Demand™ content is deleted.

## **Schedule FM Radio**

You can schedule listening and recording sessions for FM Radio. The files that have been recorded are saved in MP3 format in the Library.



---

**FM Radio: Schedule Tab**

---

***Set an FM Radio schedule***

You can schedule FM Radio to record a program or playing back a pre-selected radio station as a wake-up alarm on the dates and times you specify. If you have other ATI Multimedia Center™ features installed, you can also schedule events for them.

- 1** In the FM Radio dashboard, click the **Setup** button, or press **Ctrl + S**.
- 2** Select the **Schedule** tab.
- 3** Click the **Create New** command button. The Schedule Wizard guides you step-by-step through the new schedule creation procedure, prompting as to how often the FM Radio event should occur (Daily, Each Weekday, Once a Week, or One Time Only), the start time, the duration, and whether or not to record a show or switch on as a wake-up alarm.

## Manage scheduled events

The following table lists the Schedule dialog buttons for managing Scheduled events.

Schedule Tab Button	Function
Create New	Opens the Schedule Wizard so you can create a new scheduled event.
Delete	Deletes a selected event from the Schedule window.
Delete All	Deletes all scheduled events in the Schedule window.
Modify	Opens the Schedule Wizard for a selected event.

## Recording Using FM-on-Demand™

You can immediately record to your hard disk any radio program as it is being aired, or quickly schedule the recording of a show that will be airing shortly.

When FM Radio is launched, it immediately begins recording, up until the maximum amount of drive space/recording time allotted in the FM-on-Demand™ Disk Settings. This feature enables users to record and save to a separate file a program that has already been running for a while, or pause a live broadcast.



- During recording, **Tuning**, the **Preset** selection, the **Set** button, **Seek**, and **Setup** are disabled.
- If you click **Tune** or **Seek** during playback, FM Radio returns to live mode.

### Immediately record in FM Radio

- 1 From the FM Radio dashboard, click the **Record** button.
- 2 When finished, click the **Stop** button.

### Record for a specific time period using FM-ON-DEMAND™

- 1 In the FM Radio dashboard, click **Set Start Marker**, then drag the position marker to set the beginning of a recording session.
- 2 In the FM Radio dashboard, click **Set End Marker**, then drag the position marker to set the end of the recording session.

- 3 In the FM Radio dashboard, click the **Record** button. An MP3 file is saved containing the radio content just selected.



- You can also right-click the **Record** button, and then select **Record For**, **Record Until**, **Record Using Markers**, or **Record Using History**.

## FM Radio Playback

To listen to previous portions of a program that is still running or actively being recorded by FM Radio, use the playback functions. In addition to pausing and playing live radio, you can also change the playback speed or skip forward/backward in order to find a portion of the radio program of interest.

### *Play back a radio program*

- In the FM Radio dashboard, click the **Play** button. Clicking it again will pause playback.

### *Change playback speed*

- In the FM Radio dashboard, click the **Playback speed** button, or press **Alt + F10**.

The following settings are available for the Playback speed button:

- Normal (default)
- Slow
- Fast

### *Skip forward or backward in playback*

- To skip forward in playback click the **Skip Forwards** button in the FM Radio dashboard, or press **End**.
- To skip backwards in playback click the **Skip Backwards** button in the FM Radio dashboard, or press **Home**.

### *Change the skip forward or backward time intervals*

- To change the time duration for skipping forward or backward, from the FM Radio dashboard right-click on either the **Skip Forwards/Skip Backwards** button and select the time interval.

The following options are available:

- 10 seconds

- 30 seconds
- 1 minute
- 2 minutes

## Setting Preset Stations

FM Radio allows you to set radio station settings that you can return to automatically with the click of a button – much like a set of car radio buttons.

Ten preset station settings are available, although only five are visible at any one time.

### *Switch between a range of preset buttons*

- In the FM Radio dashboard, click the **Show Preset Buttons** button. The range will switch from **1 - 5** to **6 - 10**, or vice versa, depending on the range of preset stations that were previously displayed.

### *Set a preset station*

- 1 In the FM Radio dashboard, select an FM station (for example, 102.1 MHz).
- 2 Click a preset button (**1 - 5** or **6 - 10**) to associate with that station.

If the preset button is already associated with an FM station, you can right-click the preset button, and then click **Set** in the popup menu to assign the new frequency to the preset button.

## Alarm Settings

The alarm settings in FM Radio enable users to use the program as a radio alarm clock, providing a sleep timer which “turns on” FM Radio at a pre-determined time, as well as snooze and alarm reset functionality.



Settings for the sleep timer (Duration and Fade Out) can be found in FM Radio setup.

### *Activate the sleep timer*

- In the FM Radio dashboard, click the **Alarm Settings** button. From the menu, select **Sleep Timer**, or press **F11**.



**Activate the snooze function**

- In the FM Radio dashboard, click the **Alarm Settings** button. From the menu, select **Snooze**, or press **F12**.

**Reset the alarm**

- In the FM Radio dashboard, click the **Alarm Settings** button. From the menu, select **Reset Alarm**, or press **F10**.

**Mute Functionality**

The mute button quickly turns off the sound of FM Radio. The mute button also provides quick access to the Stereo/Mono toggle.

**Toggle stereo or mono**

- Right-click the **Mute** button. Select **Mono** or **Stereo** as desired.

**Activate mute**

- Click the **Mute** button, Or press **\***.

**FM Radio Feature Menu**

You can access FM Radio functions by right-clicking on the control panel or the viewing area of the display panel. This provides direct access to settings that are also available via the Setup dialogs.

Additional settings can be accessed by right-clicking over specific buttons in FM Radio.

Command	Key(s)
Setup	Opens the FM setup page.
Always On Top	Displays FM Radio on top of other applications.
Audio Mode	Mono – Selects monaural audio. Stereo – Selects stereo audio.
History	Displays the FM History page.
Schedule FM Radio	Schedules an FM Radio event.
About	Displays the About dialog.

Command	Key(s)
Exit	Closes FM Radio.

## FM Radio Keyboard Shortcuts

To change stations from your keyboard, type the station's frequency (for example "99.1", or "991") or type the station's preset number when the FM Radio application is selected.

The following keyboard shortcuts are available to easily access various FM Radio features directly.

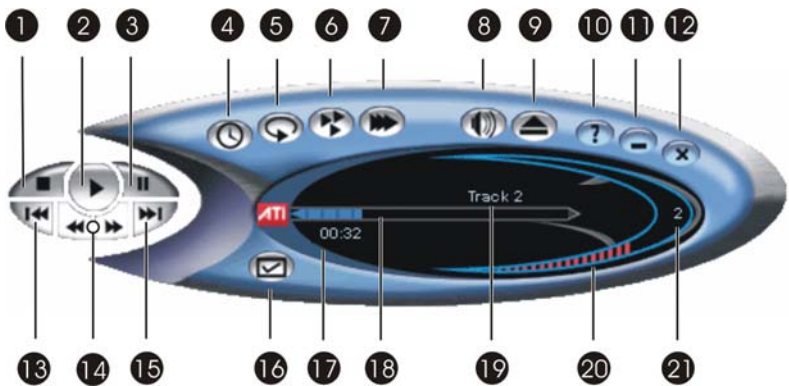
Command	Key(s)
<b>In favourite station list:</b> Create new Delete Edit station name Toggle Force to Mono mode Edit frequency	Ins Del F2 F3 F4
<b>Tune Up / Down</b>	Up arrow / Down arrow
<b>Volume Up / Down</b>	+ / -
<b>Scan Up / Down</b>	Left arrow / Right arrow
<b>Toggle Mute</b>	Num Lock
<b>Select Preset Stations</b>	1 – 0
<b>Overwrite the preset station with the currently-selected frequency</b>	Alt+1 – Alt+0
<b>Open Setup</b>	Ctrl+S
<b>Close FM Radio</b>	Alt+F4
<b>Minimize FM Radio</b>	F8
<b>Display "About" Information</b>	Alt+A
<b>Toggle Mono/Stereo</b>	Ctrl+M
<b>Toggle Mute</b>	*
<b>Reset Alarm</b>	F10
<b>Toggle Sleep Timer</b>	F11

Command	Key(s)
<b>Toggle Snooze</b>	F12
<b>Start/End Recording</b>	Ctrl+R
<b>Toggle Playback / Pause</b>	Spacebar
<b>Change Playback Speed: Slow (x0.5) / Normal (x1) / Fast (x1.5)</b>	Alt+F10
<b>Fast Reverse</b>	Home
<b>Fast Forward</b>	End



# CD Audio

Use the ATI Multimedia Center™ CD Audio feature to play standard audio CDs on your system CD drive. Advanced features such as time mode, looping, shuffle playback, and intro playback are available from the CD Audio dashboard. Change several CD player settings, choose power management settings, and schedule CD playback with the CD Audio Setup dialog.



CD Audio Dashboard	
1	Stop
2	Play
3	Pause
4	Time Mode
5	Looping
6	Shuffle Playback
7	Intro Playback
8	Mute
9	Eject
10	Help
11	Minimize

---

**CD Audio Dashboard**


---

<b>12</b>	Exit
<b>13</b>	Previous Track
<b>14</b>	Skip Back / Skip Forward
<b>15</b>	Next Track
<b>16</b>	Setup
<b>17</b>	Running Time Indicator
<b>18</b>	Track Position
<b>19</b>	Track Name
<b>20</b>	Volume
<b>21</b>	Track Number

---

***Start CD Audio from LaunchPad***

- On the ATI Multimedia Center™ Launchpad, click the **CD** button. The CD Audio dashboard opens.

***Start CD Audio from Windows® taskbar***

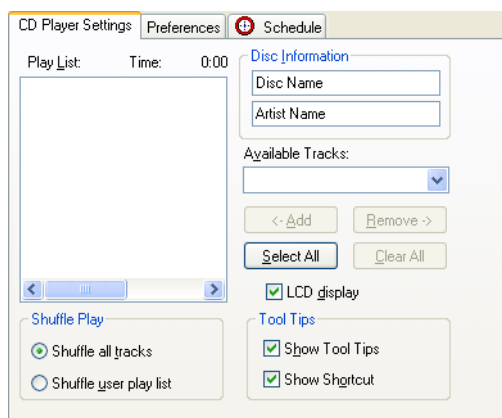
- 1** In the Windows® taskbar, click **Start**.
- 2** Point to **Programs**.
- 3** In the Programs list, point to ATI Multimedia Center™, and click **CD Audio**.

***Start CD Audio from another ATI Multimedia Center™ application***

- 1** With another ATI Multimedia Center™ application open, look for the ATI logo on either the application dashboard or the application video window.
- 2** Click the ATI logo and, from the ATI Multimedia Center™ application menu, choose **CD Audio**. The CD Audio control dialog opens.

## Settings Tab

Use the CD Player Settings tab to view the track information on a CD. You can also add disc information, such as disc and artist names, shuffle track order, and create a play list.



---

### DVD Player Setup: Settings Tab

---

#### Open the CD Player Settings tab

- 1 On the CD Player dashboard, click the **Setup** button or press **Ctrl+S**.
- 2 On the Setup dialog, click the **CD Player Settings** tab.

#### Add disc information

- 1 In the Disc Information Section, click inside the **Disc Name** box.
- 2 At the insertion point type the name of the current CD.
- 3 Click inside the **Artist Name** box.
- 4 At the insertion point type the name of the artist.
- 5 Click **OK**. The disc and artist names are displayed in the CD dashboard whenever you play that CD.

#### Set shuffle play options

In the Shuffle Play section, you have the following options:

- **Shuffle all tracks:** Play all tracks in random order.

- **Shuffle user play list:** Play the tracks in your play list in random order.

### **Select options for the CD Audio tooltips**

In the Tool Tips section, you have the following options:

- **Show Tool Tips:** Show the full name of control in the tool tip when you have your mouse pointer over a button.
- **Show Shortcut:** Display the keyboard shortcut for control in the tool tip.

### **Show LCD time and track numbers**

The LCD display option shows the current playback time and track numbers in an LCD-type display on the CD Player GUI. When you right-click the LCD time and track number display, you can select new options from the shortcut menus.

- 1 In the CD Player Settings pane, check the **LCD display** option.
- 2 Click **OK**.

## **Creating a Play List**

In the CD Audio Setup dialog, the Play List box provides a way to build a list of favorites by adding or removing the tracks listed in the Available Tracks box.

### **Add tracks to the play list**

- 1 Under the CD Player Settings tab, select a track from the **Available Tracks** box.
- 2 Click the **Add** button. The selected track is shown in the Play List Box.



To add all available tracks, click the Select All button.

### **Remove tracks from the play list**

- 1 In the **Play List** box, select a track.



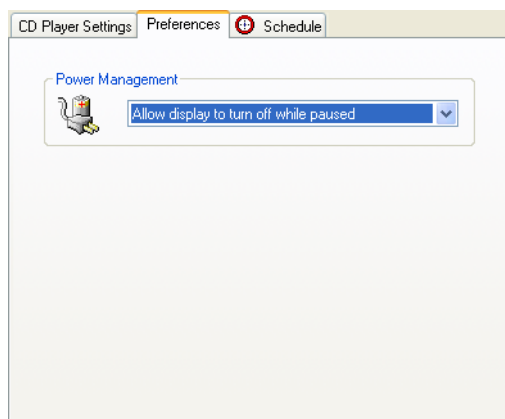
- 2 Click the **Remove** button. The track is removed from the play list.



To remove all the tracks listed in the Play list pane, click the Clear All command button.

## Preferences Tab

You can change the Power Management settings for your system, under the Preferences tab in the CD Player Setup dialog.



---

**CD Player: Preferences Tab**

---

### *Change Power Management Settings*

- 1 On the CD Player dashboard, click the **Setup** button. The CD Player Setup dialog opens.
- 2 Click the **Preferences** tab.
- 3 In the Power Management section, open the drop-down menu and choose one of the following power management levels:
  - **Always:** Power management always on.
  - **Disabled while playing:** Power management is disabled while playing files.
  - **Allow display to turn off while paused:** The display turns off while paused.
  - **Disabled:** Power management not enabled.

## Schedule Tab

Use the Schedule tab to activate events on the dates and times you specify. You can schedule events for Television, CD Audio, File Player, TV Magazine™, Video Capture, and Video CD.

You can run a scheduled event immediately, at some time in the future, or every time Windows® is started. To run a scheduled event when Windows® starts, install the scheduler in your Windows® startup file. For more information, see Windows® online help.

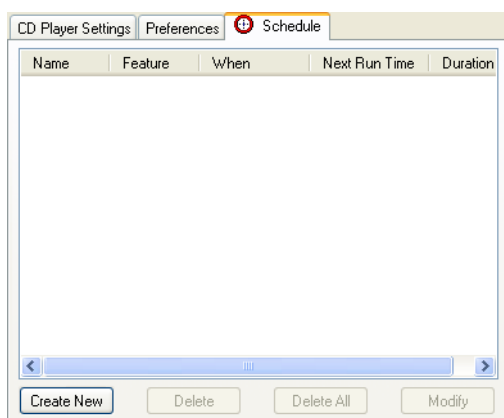
To create scheduled events, use the Schedule Wizard, which guides you step by step through the event creation procedure.

The Schedule tab dialog lists the following information for all of the events you have created:

- Event name.
- Related ATI Multimedia Center™ feature.
- When the event is scheduled to run.
- The next time the event will run.
- Duration of the event.



Events whose dates have passed are not automatically removed. They can be deleted or reactivated by setting a new run time.



**Create a CD Player Schedule**

- 1 On the CD Player dashboard, click the **Setup** button or press **Ctrl+S**. The Setup dialog opens.
- 2 On the Setup dialog, click the **Schedule** tab.
- 3 In the lower-left of the Schedule page, click the **Create New** button. The Schedule Wizard opens.
- 4 The Schedule Wizard guides you step by step through the new schedule creation procedure. After you have set the information in each Schedule Wizard screen, click the **Next** button to advance to the next step.
- 5 In the final screen, click **Finish**. The Schedule Wizard closes and your new scheduled event is listed in the Schedule window.

**Manage scheduled events**

You can delete and modify scheduled events with the Delete, Delete All, and Modify buttons. The following table lists the Schedule page buttons for managing your scheduled events.

Schedule Page Command Button	Function
Create New	Opens the Schedule Wizard so you can create a new scheduled event.
Delete	Deletes a selected event from the Schedule window.
Delete All	Deletes all scheduled events in the Schedule window.
Modify	Opens the Schedule Wizard for a selected event.

**Using CD Audio**

The ATI Multimedia Center™ CD Audio player works the same way as most PC based CD players, but the CD Audio dashboard provides plenty of added ATI Multimedia Center™ features to make your CD audio experience more enjoyable. You can stop and pause playback, skip forward or back by individual tracks, change the CD time mode, loop, shuffle, and sample the first few seconds of a track to decide if you want to continue listening.

**Choose CD time mode**

- 1 On the CD Audio dashboard, right-click the **Time Mode** button.

2 In the shortcut menu, choose one of the following time modes:

- **Elapsed Time:** Displays how much track time has played.
- **Remaining Time:** Displays remaining time for the current track.
- **Track Time:** Displays the total time for the current track.
- **Total Elapsed Time:** Displays the elapsed time for the entire CD.
- **Total Remaining Time:** Displays remaining time for the entire CD.
- **Total Play Time:** Displays the total time for the entire CD.

### ***Loop CD playback***

- On the CD Audio dashboard, click the **Looping** button. The current CD repeats play until you click the Looping button again.

### ***Shuffle CD playback***

- On the CD Audio dashboard, click the **Shuffle Playback** button.

### ***Play track intro***

- On the CD Audio dashboard click the **Intro Playback** button. CD Audio samples the first few seconds of each track.

### ***Mute CD Audio***

- On the CD Audio dashboard click the **Mute** button. The CD continues playing without audio.

### ***Eject a CD***

- On the CD Audio dashboard, click the **Eject** button. Your CD player drawer opens.

### ***Change tracks and search a CD***

- To change tracks, on the CD Audio dashboard, click the **Next Track** or the **Previous Track** button.
- To search a track for a particular passage, on the CD Audio dashboard, click the **Skip Forward** or the **Skip Back** button.



You can also change tracks by typing a track number on your keyboard.

# CD Audio Keyboard Shortcuts

You can use the following keys to control CD Audio from your keyboard.

Command	Shortcut Keys
Play	Ctrl + X
Pause	Ctrl + B
Stop	Ctrl + Z
Previous Track	Page Up
Next Track	Page Down
Skip Back	Home
Skip Forward	End
Toggle Play/Pause	Spacebar
Volume up/down	<b>Keyboard:</b> right arrow key, left arrow key, +/- <b>Numeric keypad:</b> +/-
Time Mode	Ctrl + T
Setup	Ctrl + S
Looping	Ctrl + A
Shuffle Playback	Ctrl + R
Intro Playback	Ctrl + I
Mute	* (asterisc)
Eject	Ctrl + E
Help	F1
Exit	Alt + F4

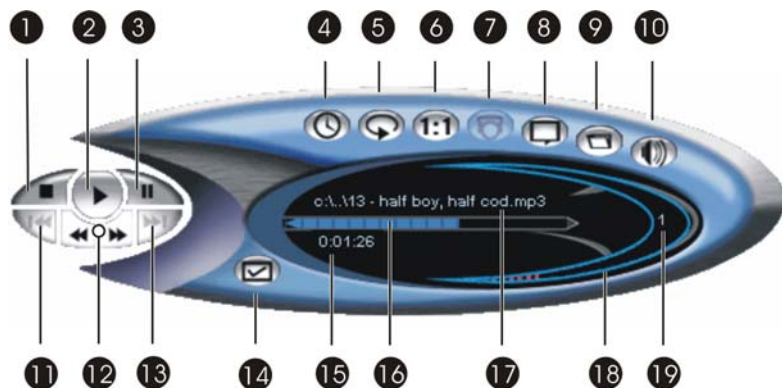


## File Player

Use the ATI Multimedia Center™ File Player to play multimedia files from a local directory. You can play several multimedia file formats, including TV-ON-DEMAND™ VCR files. The types of files you can play depend on the system software. For example, MPEG-2 file playback is available if ATI's DVD Player or some other MPEG-2 decoder is installed.

The ATI Multimedia Center™ can play these multimedia files:

- High-definition video files recorded from DTV using the ATI Multimedia Center™ Library.
- ASF
- AVI
- MPEG (.mpg, .mpeg)
- MP (.mp3, .mp2)
- MIDI (.mid)
- WAV (.wav)
- WMA
- ATI VCR (.vcr files is a proprietary ATI video format – Personal Video Recorder files recorded from the Multimedia Center TV feature).



<b>File Player Dashboard</b>	
<b>1</b>	Stop
<b>2</b>	Play
<b>3</b>	Pause
<b>4</b>	Time Mode
<b>5</b>	Looping
<b>6</b>	Zoom / Unzoom
<b>7</b>	Still Capture
<b>8</b>	Closed Captions
<b>9</b>	Open File
<b>10</b>	Mute
<b>11</b>	Previous File
<b>12</b>	Skip Back / Skip Forward
<b>13</b>	Next File
<b>14</b>	Setup
<b>15</b>	Time
<b>16</b>	Position
<b>17</b>	File Name
<b>18</b>	Volume
<b>19</b>	File Number

### ***Start File Player from LaunchPad***

- On the ATI Multimedia Center™ Launchpad, click the **Player** button. The File Player dashboard and display window opens.

### ***Start File Player from the Windows® taskbar***

- 1** In the Windows taskbar, click **Start**, and then point to **Programs**.
- 2** Point at **ATI Multimedia Center**, and then select **File Player**. The File Player dashboard and display window opens.



### ***Start File Player from another Multimedia Center feature***

- 1 On either the feature's dashboard or display panel, click the **ATI logo**. The application list opens.
- 2 From the application list, choose **Player**. The File Player dashboard and display window opens.

## **Setting up the File Player**

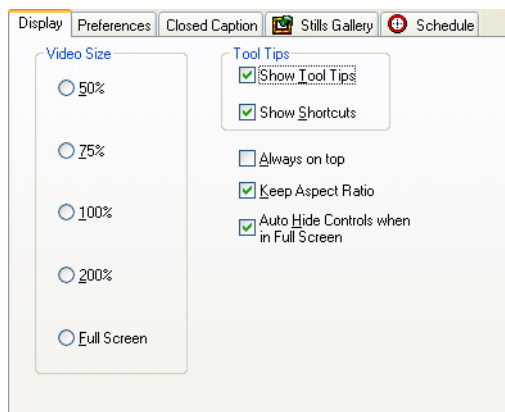
The ATI Multimedia Center™ File Player Setup dialog provides several pages to let you set up the video display, preferences, slide shows, closed captions, stills gallery, and scheduled events. There are dozens of settings and features to get the most out of your File Player.

### ***Open the File Player Setup dialog***

- On the File Player dashboard, click the **Setup** button. The File Player Setup dialog opens.

## **Display Tab**

There are several options available for controlling the File Player display. Under the Display tab, you can set the video size, select a time mode, use file player options, file player tool tips, and control other file player features.



---

**File Player: Display Tab**

---

### ***Change the File Player display size***

- 1 On the File Player Setup dialog click the **Display** tab.
- 2 In the Video Size area, choose one of the following playback sizes:
  - **50%**
  - **75%**
  - **100%**
  - **200%**
  - **Full Screen**

### ***Choose a File Player time mode***

- 1 On the File Player Setup dialog click the **Display** tab.
- 2 In the Time Mode area, choose one of the following time modes:
  - **Elapsed Time:** Displays the time passed since the file started playing.
  - **Remaining Time:** Displays the time remaining in the file.
  - **Total Time:** Displays the total time for the entire file.

### ***Choose File Player options***

- 1 On the File Player Setup dialog click the **Display** tab.
- 2 In the Options area, choose any of the following options:
  - **LCD Display:** Displays track number and current playback time on an LCD-type display.
  - **Always on top:** Always displays Video CD on top of other windows.
  - **Keep Aspect Ratio:** Preserves the aspect ratio when you resize or zoom the display. The Aspect Ratio is the relationship of width (x-axis) to height (y-axis).
  - **Auto Hide Controls when in Full Screen:** Automatically hides Video CD controls when playing in full-screen mode.

### ***Choose tool tip options***

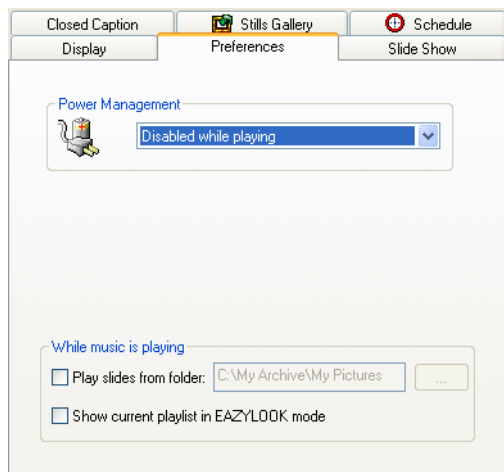
- 1 On the File Player Setup dialog click the **Display** tab.
- 2 In the Tool Tips area, choose any of the following options:
  - **Show Tool Tips:** Display Tool Tips when you point at a control on the File Player dashboard.
  - **Show Shortcut:** Display keyboard Shortcut keys when you point at a control.

### **Choose a File Player minimize option**

- 1 On the File Player Setup dialog click the **Display** tab.
- 2 In the When Minimized area, choose any of the following options:
  - **Minimize File Player:** Minimizes the File Player dashboard and Display window.
  - **ThruView Desktop:** Blends the File Player display with your desktop
  - **ThruView Window:** Blends the File Player display with the current window.

## **Preferences Tab**

The File Player Preferences tab lets you change the system Power Management settings and choose slides for showing when music is playing.



---

**File Player: Preferences Tab**

---

### **Change power management settings**

- 1 On the File Player dashboard, click the **Setup** button. The File Player Setup panel opens.
- 2 Click the **Preferences** tab.
- 3 In the Power Management section, open the drop-down menu and choose one of the following power management levels:
  - **Always:** Power management always on.

- **Disabled while playing:** Power management is disabled while playing files.
- **Allow display to turn off while paused:** Only the display turns off while paused.
- **Disabled:** Power management not enabled.

### ***Play slides while music is playing***

You can automatically show slides on your computer when ever you play music with the File Player.

- 1 On the File Player dashboard, click the **Setup** button. The File Player Setup panel opens.
- 2 Click the **Preferences** tab.
- 3 In the While music is playing section, check the **Play slides** from folder option.
- 4 On the right-hand side of the Play slides from folder box, click the button. The Browse for Folder window opens.
- 5 Browse through your system to locate and select the folder containing your slide files.
- 6 Click **OK**. The path to your files is shown in the Play slides from folder box.
- 7 On the File Player Setup dialog, click **OK**. Your slides are displayed when you play music with the File Player.

### ***Show your playlist in EAZYLOOK mode***

You can automatically show your File Player play list in EAZYLOOK™ mode.

- 1 On the File Player dashboard, click the **Setup** button. The File Player Setup dialog opens.
- 2 Click the **Preferences** tab.
- 3 In the While music is playing section, check the **Show current playlist in EAZYLOOK™ mode** box.

### **Slide Show Tab**

Under the Slide Show tab, set up several features for file player slide shows. You can choose music, slides, and special effects that play whenever you play music with the ATI Multimedia Center™ File Player.



---

### File Player: Slide Show Tab

---

#### ***Play background music during a slide show***

- 1 On the File Player dashboard, click the **Setup** button. The File Player Setup dialog opens.
- 2 Click the **Slide Show** tab.
- 3 In the Play background music section, check the box. The From folder and From FM Radio recordings options are available.
- 4 Check the **From folder** option.
- 5 On the right-hand side of the From folder option, click the button. The Browse for Folder window opens.
- 6 Browse through your system to locate and select the folder containing your slide files.
- 7 Click **OK**. The path to your files is shown in the From folder box.
- 8 On the File Player Setup dialog, click **OK**.

#### ***Set slide show options***

You can set the length of time a slide is displayed before changing to the next slide and you can choose a play order option.

- 1 On the File Player dashboard, click the **Setup** button. The File Player Setup dialog opens.

- 2 Click the **Slide Show** tab.
- 3 In the Options section click inside the **Show slide for** box.
- 4 At the insertion point enter the number of seconds to show a slide. Alternatively, you can click the up and down arrows.
- 5 In the Play order box open the drop-down list and choose either **Random** or **Sequential**.

### **Choose slide show effects**

The Slide Show page lets you choose from several slide show effects.

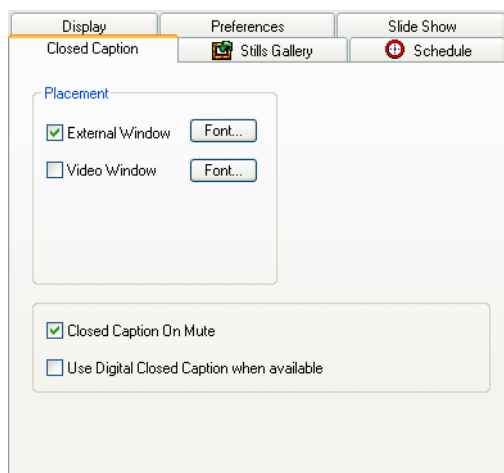
- 1 On the File Player dashboard, click the **Setup** button. The File Player Setup dialog opens.
- 2 Click the **Slide Show** tab.
- 3 In the Effects section you can set the following slide show effects:

Slide Show Effects		
Transition In	Transition Out	Transition time
Random	Random	Slow
Fade	Fade	Medium
Slide Left	Slide Left	Fast
Slide Right	Slide Right	
Slide Up	Slide Up	
Slide Down	Slide Down	

- 4 When you have chosen the effects you want, on the File Player Setup dialog, click **OK**.

### **Closed Caption Tab**

Under the Closed Caption tab, you can control the way closed captions are displayed when viewing video files. You can also choose the closed caption placement, change the closed caption fonts, and select activation and digital closed caption options.



---

### File Player: Closed Caption Tab

---

#### ***Set closed caption placement***

You can set File Player closed captions to play inside the Video Window or in an External Window or both.

- 1 On the File Player dashboard, click the **Setup** button. The File Player Setup dialog opens.
- 2 Click the **Closed Caption** tab.
- 3 In the Placement section, to show closed captions in an external window, check the **External Window** box. To show closed captions inside the video window, check the **Video Window** box.
- 4 On the File Player Setup dialog click **OK**.

#### ***Change closed caption fonts***

- 1 On the File Player dashboard, click the **Setup** button. The File Player Setup dialog opens.
- 2 Click the **Closed Caption** tab.
- 3 In the Placement section, to change the closed caption font for either video window or external window, click the **Font** button. A font window opens.
- 4 Select the font, size and style you want and click **OK**. The font window closes.

- 5 On the File Player Setup dialog click **OK**.

### ***Change closed caption options***

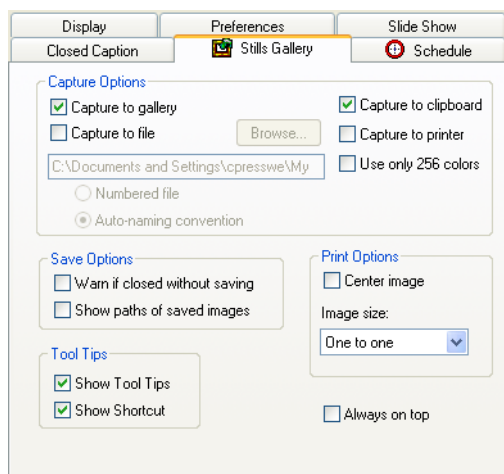
- 1 On the File Player dashboard, click the **Setup** button. The File Player Setup dialog opens.
- 2 Click the **Closed Caption** tab.
- 3 In the lower part of the Closed Caption page, choose from the following options:
  - **Closed Caption On Mute:** Shows closed captions when the File Player is muted.
  - **Use Digital Closed Caption when available:** Shows closed captions when they are available in digital files.
- 4 On the File Player Setup panel, click **OK**.

## **Stills Gallery Tab**

Capture full-color, 24-bit still images from television and save them on your computer's hard drive. You can place images on the system clipboard, or show them as thumbnail images in the stills gallery. You can change the way the stills gallery saves and prints your captured images. You can also choose capture, save, and print options and change the information shown in the stills gallery tool tips.

The stills gallery supports Windows-standard bitmaps (.bmp) and other graphics file formats. You can insert saved images into reports, presentations, emails, and other documents.





---

### File Player: Stills Gallery Tab

---

#### **Select capture options**

- 1 On the dashboard, click **Setup**.
- 2 Click the **Stills Gallery** tab.
- 3 In the Capture Options section, choose from the following options:
  - **Capture to gallery:** Captures still images to the stills gallery.
  - **Capture to file:** Captures still images to a file folder of your choosing.
  - **Numbered file:** Stores captured images in numbered files (pic001.bmp, pic002.bmp, and so on) on your hard drive.
  - **Auto-naming convention:** Stores captured images as auto-named files on your hard disk.
  - **Capture to clipboard:** Places captured images on the Windows Clipboard.
  - **Capture to printer:** Send the captured image to a printer.
  - **Use only 256 colors:** Saves captured images as 256-color files in order to save space.

#### **Set up save options**

- 1 On the dashboard, click **Setup**.
- 2 Click the **Stills Gallery** tab.

- 3 In the Capture Options section, choose from the following options:
  - **Warn if closed without saving:** Alerts you if you close the stills gallery without saving captured images.
  - **Show paths of saved images:** Display the drive, folders, and subfolders that contain your saved images.
- 4 When you have selected the options you want, click **OK**.

### **Select print options**

- 1 On the dashboard, click **Setup**.
- 2 Click the **Stills Gallery** tab.
- 3 In the Print Options section, choose from the following print options:

**Center image:** Centers stills gallery images.

**Image size:** Chooses an image print size from the following:

- **Maximize:** Prints in full-page format.
- **One to One:** Prints in the same size as original image.
- **Double:** Prints at twice the original size.

### **Set up tool tip options**

- 1 On the dashboard, click the **Setup** button.
- 2 Click the **Stills Gallery** tab.
- 3 In the Tool Tips section, check or clear the following options:
  - **Show Tool Tips:** Displays tool tips while in the stills gallery.
  - **Show Shortcut:** Displays shortcut keys while in the stills gallery.
- 4 When you have selected the tool tip options you want, click **OK**.

## **Schedule Tab**

Use the Schedule tab to activate events on the dates and times you specify. You can schedule events for Television, CD Audio, File Player, TV Magazine™, Video Capture, and Video CD.

You can run a scheduled event immediately, at some time in the future, or every time Windows® is started. To run a scheduled event when Windows® starts, install the scheduler in your Windows® startup file. For more information, see Windows® online help.

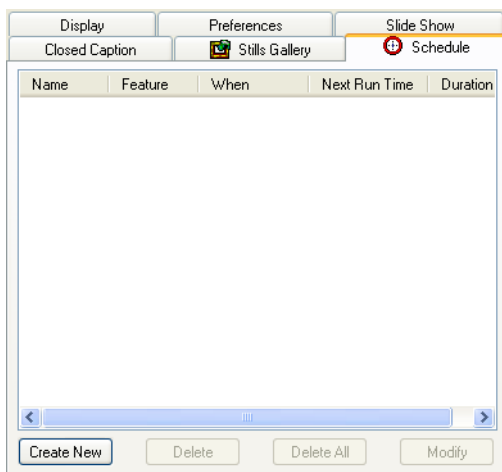
To create scheduled events, use the Schedule Wizard, which guides you step by step through the event creation procedure.

The Schedule tab dialog lists the following information for all of the events you have created:

- Event name.
- Related ATI Multimedia Center™ feature.
- When the event is scheduled to run.
- The next time the event will run.
- Duration of the event.



Events whose dates have passed are not automatically removed. They can be deleted or reactivated by setting a new run time.



---

#### File Player: Schedule Tab

---

#### ***Open the schedule setup***

- 1 On the TV, CD Audio, File Player, DVD, Video CD, or EasyConnect™ dashboard, click the **Setup** button. The Setup dialog opens.
- 2 In the Setup dialog, click the **Schedule** tab.

### **Create a File Player scheduled event**

- 1 On the File Player dashboard, click the **Setup** button or, on your keyboard, press **Ctrl + S**. The Setup dialog opens.
- 2 On the File Player Setup dialog, click the **Schedule** tab.
- 3 In the lower-left of the Schedule page, click the **Create New** button. The Schedule Wizard opens.
- 4 The Schedule Wizard, guides you step by step through the new schedule creation procedure. After you have set the information in each Schedule Wizard screen, click the **Next** button to advance to the next step.
- 5 In the final screen click **Finish**. The wizard closes and your new event is listed in the Schedule tab window.

### **Manage scheduled events**

The following table lists the Schedule dialog buttons for managing Scheduled events.

Schedule Tab Button	Function
Create New	Opens the Schedule Wizard so you can create a new scheduled event.
Delete	Deletes a selected event from the Schedule window.
Delete All	Deletes all scheduled events in the Schedule window.
Modify	Opens the Schedule Wizard for a selected event.

### **Delete events**

- 1 In the File Player Setup dialog, click the **Schedule** tab.
- 2 In the Schedule list, select an event.
- 3 Click the **Delete** button. The selected event is deleted.
- 4 To delete all of the events in the Schedule list, repeat step 1 and click the **Delete All** button.

### **Modify a scheduled event**

- 1 In the File Player Setup dialog, click the **Schedule** tab.
- 2 In the Schedule list, select an event.

- 3 Click the **Modify** button. The Schedule Wizard opens.
- 4 The Schedule Wizard, guides you step by step through the schedule creation procedure. You can make any changes to the event along the way. After you have set the information in each Schedule Wizard screen, click the **Next** button to advance to the next step.
- 5 In the final screen click **Finish**. The wizard closes and your modified event is listed in the Schedule tab window.

### ***Suspend a scheduled event***

- 1 In the File Player Setup dialog, click the **Schedule** tab.
- 2 In the Schedule list, under the Name column, clear the check box on the left side of the schedule event name.
- 3 To activate the event again, click check the box the left side of the schedule event name.

## **Using File Player**

To control the File Player you use the command buttons on the File Player control panel. The Video CD control panel has stop, play, pause, previous, next and skip command buttons. It also provides Still Capture, Mute, Unzoom, Audio, and Eject buttons and lets you access the Video CD Setup dialog.

### ***Select a time mode display***

- 1 On the File Player dashboard, right-click the **Time Mode** button.
- 2 From the shortcut menu, select one of the following:
  - **Elapsed Time:** Displays time passed since the file began to play.
  - **Remaining Time:** Displays time remaining in the file.
  - **Total Time:** Displays the total time of the file.

### ***Loop file playback***

- On the File Player dashboard, click the **Looping** button. Files will repeat until you click Stop or click the Looping button again.

### ***Zoom and Unzoom the display***

- 1 On the File Player dashboard, right-click the **Unzoom** button.

- 2 From the shortcut menu, select one of the following zoom levels:
  - **Zoom 2x**
  - **Zoom 4x**
  - **Zoom 8x**
- 3 To unzoom the display, on the File Player dashboard, click the **Unzoom** button. The display image returns to the normal 1:1 display.

### ***Capture a still image from File Player***

- On the File Player dashboard, click the **Still Capture** button. The Stills Gallery window opens with a thumbnail image of your captured file. For more information on the Stills Gallery, see the Stills Gallery section.

### ***Show closed captions for File Player***

- On the File Player dashboard, click the **Closed Captions** button.

## **Playing Files**

The File Player can play several files at one time. The Select Files To Play window lets you create a list of files from any location on your system and then play them with the File Player.

### ***Open the Select Files To Play window***

- On the File Player dashboard, click the **Open File** button. The Select Files To Play window opens.

### ***Select Files To Play***

- 1 In the Select Files To Play window, open the **Look in** drop-down list and locate the file folder where your files are located. The files and folders are shown in the Select Files To Play window.
- 2 In the **Select Files To Play** window, click on the files you want to play.
- 3 Click **Add**. The selected files are shown in the Selected Files pane.
- 4 Click **Play**. The Select Files To Play window closes and your files start playing automatically.



The first time you open the Select Files To Play window the default file type is ATI Digital VCR Files. To look for other file types, open the Files of type drop-down list and select an alternative file type or choose All Files.

## File Player Keyboard Shortcuts

You can use the following keys to control File Player from your keyboard.

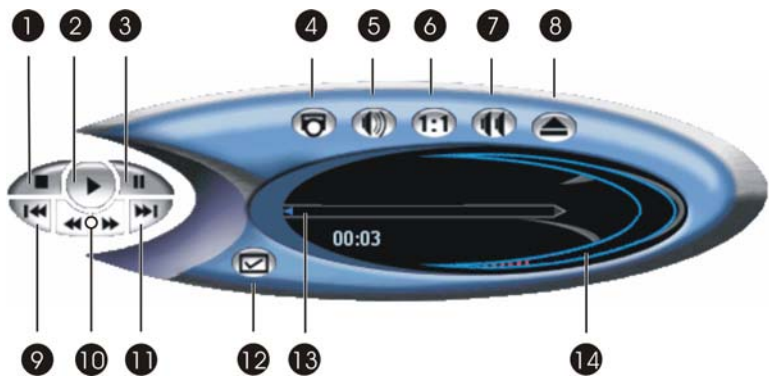
Command	Shortcut Keys
Play	Ctrl+X
Pause	Ctrl+B
Stop	Ctrl+Z
Skip Backwards	Home key
Skip Backwards	End key
Previous File	Page Up key
Next File	Page Down key
Setup	Ctrl+S
Time Mode	Ctrl+T
Looping	Ctrl+A
Zoom/Unzoom	Ctrl+Z
Still Capture	Ctrl+Insert
Closed Captions	Ctrl+C
Open File	Ctrl+O
Mute	*
Help	F1





# Video CD

The ATI Multimedia Center™ Video CD player lets you play Video 1.0 CDs, Video 2.0 Interactive CDs, and Karaoke CDs. The Setup panel lets you make changes to the Video CD display, choose from several Preference options, adjust Closed Captions, add images from a Video CD to the Stills Gallery, and create a play Schedule. If you have more than one ATI Multimedia Center™ feature installed, you can start them from the task list on the Video CD display window.



Video CD Dashboard	
1	Stop
2	Play
3	Pause
4	Still Capture
5	Mute
6	Zoom / Unzoom
7	Audio
8	Eject
9	Previous Segment
10	Skip Back / Skip Forward

---

**Video CD Dashboard**

---

11	Next Segment
12	Setup
13	Position
14	Volume

---

***Start Video CD from LaunchPad***

- On the ATI Multimedia Center™ Launchpad, click the **Video CD** button. The Video CD dashboard and video window opens.

***Start Video CD from the Windows® taskbar***

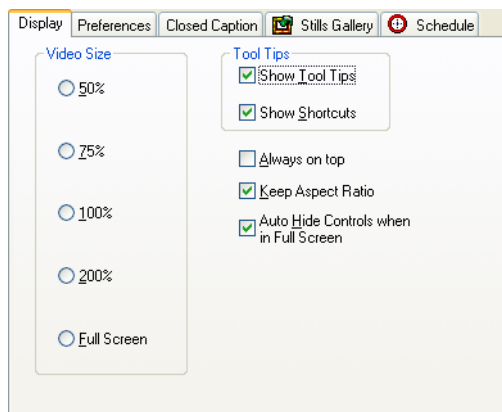
- 1 In the Windows taskbar, click **Start**, and then point at **Programs**.
- 2 Point at **ATI Multimedia Center**, and then select **Video CD**. The Video CD dashboard and video window opens.

***Start Video CD from another Multimedia Center feature***

- 1 On either the feature's dashboard or video window, click the **ATI logo**. An application list opens.
- 2 From the application list choose **Video CD**. The Video CD dashboard and video window opens.

**Display Tab**

The Video CD Display tab let you set the size of the video display, change the information displayed in the dashboard tool tips, and choose general preferences for how the Video CD player behaves when you use it.



---

### Video CD: Display Tab

---

#### ***Open the Video CD Display settings page***

- 1 On the Video CD dashboard, click the **Setup** button. The Video CD Setup dialog opens.
- 2 Click the **Display** tab.

#### ***Change the Video CD Display size***

- On the Setup dialog Display page, in the Video Size area, choose one of the following playback sizes:
  - **50%**
  - **75%**
  - **100%**
  - **200%**
  - **Full Screen.**



If the current panel does not support resizing, the values are unavailable.

#### ***Change the Video CD dashboard tooltip information***

- On the Setup dialog Display page, in the Tool Tips area, choose from the following options:
  - **Show Tool Tips:** Show tool tips when you point at controls with your mouse.

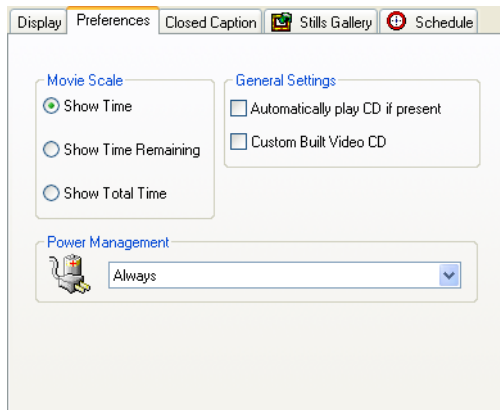
- **Show Shortcuts:** Show keyboard shortcuts when you point at controls with your mouse.

### ***Choose Video CD display option***

- On the Setup dialog Display page, below the Tool Tips area, choose from the following options:
- **Always on top:** Always displays Video CD on top of other windows.
- **Keep Aspect Ratio:** Preserves the aspect ratio when you resize or zoom the display. The Aspect Ratio is the relationship of width (x-axis) to height (y-axis).
- **Auto Hide Controls when in Full Screen:** Automatically hide Video CD controls when playing in full-screen.

## **Preferences Tab**

The Video CD Preferences settings tab lets you set up the general characteristics for your player. You can choose a movie time scale, make general settings, and control power management features.



---

**Video CD: Preferences Tab**

---

### ***Choose a movie time scale***

- 1 In the Video CD Setup dialog, click the **Preferences** tab.
- 2 In the Movie Scale area, choose one of the following options:
  - **Show Time:** Display scale in time.

- **Show Total Time:** Display the total time of the playing video CD or file.
- **Show Time Remaining:** Display the remaining time in the playing video CD or file.

### ***Choose general settings***

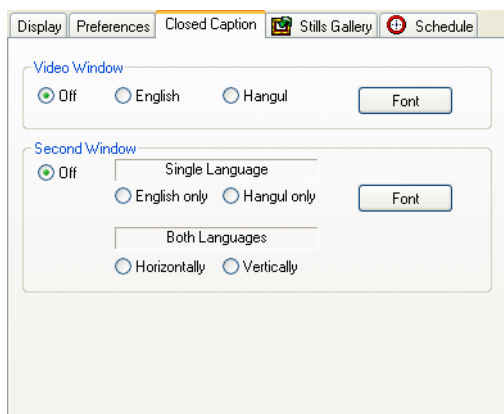
- 1 In the Video CD Setup dialog, click the **Preferences** tab.
- 2 In the General Settings area choose from the following options:
  - **Automatically play CD if present:** Automatically plays a CD when you insert it into your CD/DVD ROM drive.
  - **Custom Built Video CD:** For custom video CDs, when the VCD switches from one content to another, the video size is reset automatically.

### ***Change the power management settings***

- 1 In the Video CD Setup dialog, click the **Preferences** tab.
- 2 In the Power Management section, Select one of the following levels:
  - **Always:** Power management always enabled.
  - **Disabled while playing:** Power management is disabled while a CD is playing.
  - **Allow display to turn off while paused:** Only the display turns off when playback is paused.
  - **Disabled:** Power management is never enabled.

## **Closed Caption Tab**

The Closed Caption settings tab lets you specify how closed captioned text is displayed, and the preferred language, font, and font color.




---

### Video CD: Closed Caption Tab

---

#### ***Set options for closed captions appearing in the video window***

- 1 On the Video CD Setup dialog, click the **Closed Caption** tab.
- 2 In the Video Window section choose one of the following options:
  - **Off:** Do not display closed captioned text.
  - **English:** Display closed captioned text.
  - **Hangul:** Display Hangul text.

#### ***Set options for closed captions appearing in a closed caption window***

- 1 In the Video CD Setup dialog, click the **Closed Caption** tab.
- 2 In the Video Window section choose one of the following options:
  - **Off:** Do not open a second window.
  - **Single Language:** Displays a single language.
  - **English Only:** Displays English text.
  - **Hangul Only:** Displays Hangul text.
  - **Both Languages:** Displays two languages
  - **Horizontally:** Displays English and Hangul, side-by-side, divided by the slider.
  - **Vertically:** Displays layered view, English - Hangul - English.

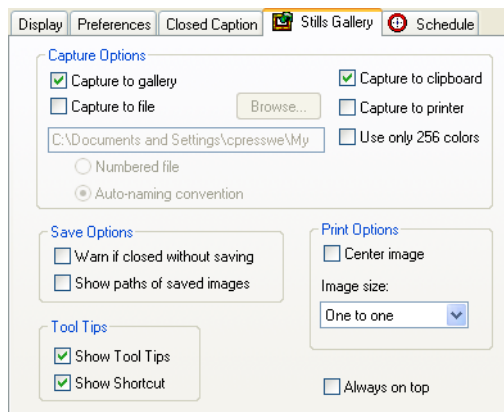
### Select the closed caption font

- 1 In the Video CD Setup dialog, on the Closed Caption page, click the **Font** button. The Select Video Font dialog opens.
- 2 Click in the **Font** box and, at the insertion point type the Font style you want, or scroll through the Font list and select a Font.
- 3 In the background section, choose either **Solid** or **Semi-Transparent**.
- 4 When you have chosen the settings you want, click **OK**. The Select Video Font dialog closes.

### Stills Gallery Tab

Capture full-color, 24-bit still images from television and save them on your computer's hard drive. You can place images on the system clipboard, or show them as thumbnail images in the stills gallery. You can change the way the stills gallery saves and prints your captured images. You can also choose capture, save, and print options and change the information shown in the stills gallery tool tips.

The stills gallery supports Windows-standard bitmaps (.bmp) and other graphics file formats. You can insert saved images into reports, presentations, emails, and other documents.



---

#### Video CD: Stills Gallery Tab

---

### Select capture options

- 1 On the dashboard, click **Setup**.

- 2 Click the **Stills Gallery** tab.
- 3 In the Capture Options section, choose from the following options:
  - **Capture to gallery:** Captures still images to the stills gallery.
  - **Capture to file:** Captures still images to a file folder of your choosing.
  - **Numbered file:** Stores captured images in numbered files (`pic001.bmp`, `pic002.bmp`, and so on) on your hard drive.
  - **Auto-naming convention:** Stores captured images as auto-named files on your hard disk.
  - **Capture to clipboard:** Places captured images on the Windows Clipboard.
  - **Capture to printer:** Send the captured image to a printer.
  - **Use only 256 colors:** Saves captured images as 256-color files in order to save space.

### ***Set up save options***

- 1 On the dashboard, click **Setup**.
- 2 Click the **Stills Gallery** tab.
- 3 In the Capture Options section, choose from the following options:
  - **Warn if closed without saving:** Alerts you if you close the stills gallery without saving captured images.
  - **Show paths of saved images:** Display the drive, folders, and subfolders that contain your saved images.
- 4 When you have selected the options you want, click **OK**.

### ***Set up tool tip options***

- 1 On the dashboard, click the **Setup** button.
- 2 Click the **Stills Gallery** tab.
- 3 In the Tool Tips section, check or clear the following options:
  - **Show Tool Tips:** Displays tool tips while in the stills gallery.
  - **Show Shortcut:** Displays shortcut keys while in the stills gallery.
- 4 When you have selected the tool tip options you want, click **OK**.

### ***Select print options***

- 1 On the dashboard, click **Setup**.
- 2 Click the **Stills Gallery** tab.



**3** In the Print Options section, choose from the following print options:

**Center image:** Centers stills gallery images.

**Image size:** Chooses an image print size from the following:

- **Maximize:** Prints in full-page format.
- **One to One:** Prints in the same size as original image.
- **Double:** Prints at twice the original size.

## Schedule Tab

Use the Schedule tab to activate events on the dates and times you specify. You can schedule events for Television, CD Audio, File Player, TV Magazine™, Video Capture, and Video CD.

You can run a scheduled event immediately, at some time in the future, or every time Windows® is started. To run a scheduled event when Windows® starts, install the scheduler in your Windows® startup file. For more information, see Windows® online help.

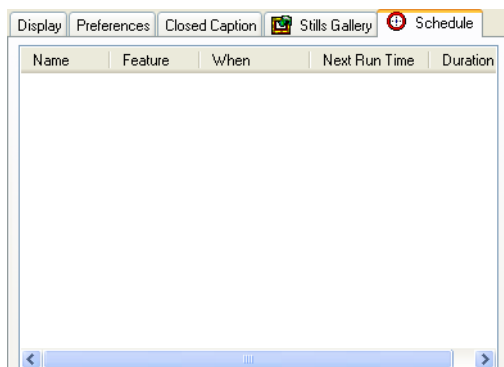
To create scheduled events, use the Schedule Wizard, which guides you step by step through the event creation procedure.

The Schedule tab dialog lists the following information for all of the events you have created:

- Event name.
- Related ATI Multimedia Center™ feature.
- When the event is scheduled to run.
- The next time the event will run.
- Duration of the event.



Events whose dates have passed are not automatically removed. They can be deleted or reactivated by setting a new run time.



---

### Video CD: Schedule Tab

---

#### ***Open the schedule setup***

- 1 On the TV, CD Audio, File Player, DVD, Video CD, or EazyConnect™ dashboard, click the **Setup** button. The Setup dialog opens.
- 2 In the Setup dialog, click the **Schedule** tab.

#### ***Create a Video CD scheduled event***

- 1 On the Video CD dashboard, click the **Setup** command button or, on your keyboard, press **Ctrl + S**. The Setup dialog opens.
- 2 On the Video CD Setup dialog, click the **Schedule** tab.
- 3 In the lower-left of the Schedule page, click the **Create New** command button. The Schedule Wizard opens.
- 4 The Schedule Wizard, guides you step by step through the new schedule creation procedure. After you have set the information in each Schedule Wizard screen, click the **Next** command button to advance to the next step.
- 5 In the final screen click **Finish**. The wizard closes and your new event is listed in the Schedule tab window.

## ***Manage scheduled events***

The following table lists the Schedule dialog buttons for managing Scheduled events.

<b>Schedule Tab Button</b>	<b>Function</b>
<b>Create New</b>	Opens the Schedule Wizard so you can create a new scheduled event.
<b>Delete</b>	Deletes a selected event from the Schedule window.
<b>Delete All</b>	Deletes all scheduled events in the Schedule window.
<b>Modify</b>	Opens the Schedule Wizard for a selected event.

### ***Delete events***

- 1 In the Video CD Setup dialog, click the **Schedule** tab.
- 2 In the Schedule list, select an event.
- 3 Click the **Delete** command button. The selected event is deleted.
- 4 To delete all of the events in the Schedule list, repeat step 1 and click the **Delete All** command button.

### ***Modify a scheduled event***

- 1 In the Video CD Setup dialog, click the **Schedule** tab.
- 2 In the Schedule list, select an event.
- 3 Click the **Modify** button. The Schedule Wizard opens.
- 4 The Schedule Wizard, guides you step by step through the schedule creation procedure. You can make any changes to the event along the way. After you have set the information in each Schedule Wizard screen, click the **Next** button to advance to the next step.
- 5 In the final screen click **Finish**. The wizard closes and your modified event is listed in the Schedule tab window.

### ***Suspend a scheduled event***

- 1 In the Video CD Setup dialog, click the **Schedule** tab.
- 2 In the Schedule list, under the Name column, clear the check box on the left side of the schedule event name.

- 3 To activate the event again, click check the box the left side of the schedule event name.

### ***Using Video CD Player***

To control Video CD player you use the command buttons on the Video CD control panel. The Video CD control panel provides stop, play, pause, previous, next and skip command buttons. It also provides Still Capture, Mute, Unzoom, Audio, and Eject buttons and lets you access the Video CD Setup dialog.

### ***Capture a still frame from a CD Video***

You can capture still images from a Video CD, and save them in the Stills Gallery.

- On the Video CD control panel, click the **Still Capture** button. The current frame is placed in the Stills Gallery. For more information refer to the Video CD Setup topics.

### ***Mute the Video CD sound***

- On the Video CD control panel, click the **Mute** button. The Video CD sound is turned off.

### ***Zoom and unzoom the Video CD video image***

There are several ways to zoom and unzoom the Video CD video image.

- On your Keyboard, press **Alt + Z**. The video image zooms within the video window.
- On the Video CD dashboard, click the **Unzoom** button. The Video CD video image zooms to 1:1.
- Right-click the Unzoom button and select from the following zoom levels:
  - **Unzoom**
  - **Zoom 2x**
  - **Zoom 4x**
  - **Zoom 8x**
- Click inside the video window and dragging your mouse. The area you select zooms, once you release the mouse button.

### ***Choose an audio mode***

You can switch audio channels when you are playing a dual-mode MPEG CD.

- 1 On the Video CD dashboard, right-click the **Audio** button.
- 2 From the shortcut menu, choose **Audio Mode**.
- 3 From the Audio Mode sub-menu, choose one of the following:
  - **Stereo**
  - **Both Channels**
  - **Left Channel**
  - **Right Channel**

## Video CD Feature Menu

The CD Feature menu lets you choose from a list of options and actions for the Video CD player and open the Video CD Setup dialog. The items in the Video CD Feature menu are also accessible when you are in full-screen mode. You can access the Video CD Feature menu by right-clicking the video view area or the Video CD dashboard.

### *Open the Video CD setup dialog*

- 1 Right-click, either the Video CD view area or the Video CD dashboard.
- 2 From the shortcut menu click **Setup**. The Setup dialog opens.

### *Eject a CD*

- On the Video CD dashboard, click the **Eject** button. Your system CD or DVD ROM drive opens. Alternatively, on your keyboard press **Ctrl + E**.

### *Play, pause, and stop your video CD*

- 1 Right-click, either the Video CD view area or the Video CD dashboard.
- 2 From the shortcut menu, choose **Play**, **Pause**, or **Stop**. The Video CD performs the action you choose.

### *Change the Video CD display size*

- 1 Right-click, either the Video CD view area or the Video CD dashboard.
- 2 From the shortcut menu, choose **Display Size**. From the Display Size sub-menu, choose one of the following:
  - **50%**

- **75%**
- **100%**
- **200%**
- **Full Screen**

### ***Close video CD panels during play***

The Video CD player sometimes has more than one panel. It can have the Menu Control, dashboard, and the Closed Caption Panel open at the same time. The Controls menu item lists all visible panels and lets you hide or show open panels.

- 1 Right-click, either the Video CD view area or the Video CD dashboard.
- 2 From the shortcut menu, choose **Controls**.
- 3 In the Controls sub-menu, click one of the panels in the list.
- 4 To open a panel, repeat steps 1 through 3. A check mark indicates that the panel is open.

### ***Choose an audio mode***

You can switch audio channels when you are playing a dual-mode MPEG CD.

- 1 Right-click, either the Video CD view area or the Video CD dashboard.
- 2 From the shortcut menu, choose **Audio Mode**.
- 3 From the Audio Mode sub-menu choose one of the following:
  - **Stereo**
  - **Both Channels**
  - **Left Channel**
  - **Right Channel**

### ***Change the Video CD movie scale***

- 1 Right-click, either the Video CD view area or the Video CD dashboard.
- 2 From the shortcut menu, choose **Movie Scale**. From the Movie Scale sub-menu, choose one of the following:
  - **Show Time** - Displays scale in time.
  - **Show Frames** - Displays scale in frames.
  - **Time Remaining** - Displays time remaining in the CD.
  - **Total Time** - Displays the total time of the CD.

## Video CD 2.0 Menu

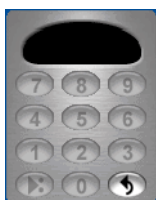
The ATI Multimedia Center™ Video CD player provides a small menu panel that you can use when playing a video CD 2.0 format CD

The menu panel lets you navigate through the various VCD 2.0 menus and sometimes VCD movies. VCD 2.0 menu items use numbers. You can type menu numbers on your keyboard or click on a number button for the number of the menu you want to select. Menus work very much like DVD menus, but without direction keys.

You use the button on the lower-left corner to select the default menu options. You use the button on the lower-right corner to return to the previous menu.



The CD 2.0 menu panel buttons are active when the appropriate options are available in the current CD. For example, if there are only 4 menu items currently showing, then buttons 1-4 will be enabled. Like-wise when there is a default selection, or a previous screen the lower-left and lower-right buttons will be active.



---

**Video CD: Video CD 2.0 Menu**

---

### ***Choose a CD 2.0 video track***

- 1** With a video CD 2.0 format disc in your CD drive, open the ATI Multimedia Center™ **VCD** feature.
- 2** On the VCD dashboard, click **Play** or on your keyboard, press **Ctrl + X**. The video CD 2.0 menu opens.
- 3** On the video CD 2.0 menu click on the numeric keys to choose a video track from the CD. The upper window displays your entries.

### **Use CD 2.0 menu in full screen mode**

- 1 With a video CD 2.0 format disc in your CD drive, open the ATI Multimedia Center™ VCD feature.
- 2 On the VCD dashboard, click **Play** or on your keyboard, press **Ctrl + X**. The video CD 2.0 menu opens.
- 3 On the **VCD video window**, double-click the title bar, or on your keyboard, press **Ctrl + F**. Alternatively, right-click either the CD Video dashboard or the video window and, from the shortcut menu point to **Display Size** and choose **Full Screen**.
- 4 In full screen, the control panel keys appear at the top of the screen. To hide them, check Auto Hide Controls in Full screen in the Display Settings page.

## **Video CD Keyboard Shortcuts**

The following are the keyboard shortcuts you can use to control the Video CD player.

<b>Command</b>	<b>Key(s)</b>
<b>Play</b>	Ctrl + X
<b>Toggle Play/Pause</b>	Spacebar
<b>Pause</b>	Ctrl + B
<b>Stop</b>	Ctrl + B
<b>Previous Segment</b>	Page Up
<b>Next Segment</b>	Page Down
<b>Skip Back</b>	Home
<b>Skip Forward</b>	End
<b>Eject</b>	Ctrl + E
<b>Setup</b>	Ctrl + S
<b>Volume up</b>	(Numeric keypad) +
<b>Volume down</b>	(Numeric keypad) -
<b>Still capture</b>	Ctrl + Insert
<b>Toggle closed captions</b>	Ctrl + C



Command	Key(s)
Mute	Shift + *
Unzoom	Alt + Z
Eject	Ctrl + E
Size presets	Ctrl + 1 through Ctrl + 4
Toggle full screen	Ctrl + F
Exit full screen	Esc
Cycle through Size up / down	Ctrl + up key / Ctrl + down key
Help	F1
Hide dashboard	F2
Always on top	F4



# TV

Watch television on your computer with the ATI Multimedia Center™ TV feature. You can receive hundreds of analog and digital television channels from both cable and antenna connections. Use the TV feature to view TV broadcasts in either full screen mode or in a resizable window on your system desktop.



All channels may not be available in all countries. In Europe, ATI Multimedia Center™ is DVB -T compatible.

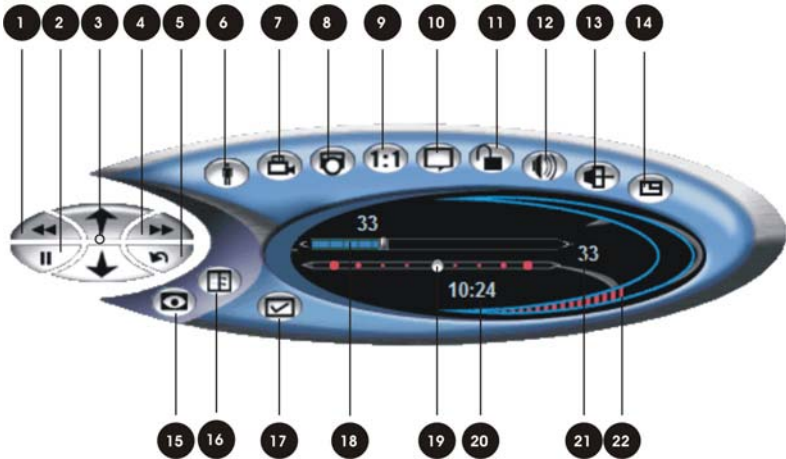
ATI Multimedia Center™ TV has several features with dozens of functions that let you get the most out of your TV Wonder™ or All-in-Wonder® card. MulTVView™ is available when you have installed multiple All-in-Wonder® or TV Wonder™ cards. The TV Listings feature allows you to schedule program recording and viewing.

ATI Multimedia Center™ TV delivers these advanced features:

- **TV-on-Demand™:** Lets you pause a live program, return later, and resume watching where you left off.
- **Digital Video Recorder:** Records TV broadcasts to your local hard drive.
- **MulTVView™:** Is available when you have installed multiple All-in-Wonder® or TV Wonder™ cards. MulTVView™ gives you Picture in Picture (PIP) viewing in full screen mode, window mode, and in EazyLook™ mode.
- **Parental Controls:** Lets you lock selected stations from viewing.
- **Channel Surfing:** Allows you to sample and select programs from station thumbnails.
- **Closed Captioning:** Shows program content text on-screen or in a separate window.
- **Still Capture:** Captures still images of your favorite program.
- **Scheduled Events:** Schedules TV program viewing at times and dates of your choice.

ATI Multimedia Center™ TV accepts a wide range of video inputs from just about any device that has video out. For more information see your TV Wonder™ or All-in-Wonder® installation guide. Depending on your system hardware, you can connect to a video camera, VCR, DVD Player, laserdisc player, and video games.

To operate the ATI Multimedia Center™ TV feature, you use the TV dashboard that opens from the ATI Multimedia Center™ LaunchPad. Various controls on the TV dashboard display functions and keyboard shortcuts when you point at them with your mouse. Some controls also display a menu of options when you right-click them.



### ATI Multimedia Center™ TV Dashboard

1	TV-on-Demand™ Skip Back
2	Play/Pause
3	Channel Up/Channel Down
4	TV-on-Demand™ Skip Forward
5	Channel Recall
6	Play Speed
7	Start/Stop Recording
8	Still Capture
9	Zoom/Unzoom
10	Closed Captions
11	Parental Control
12	Audio
13	Input Connector

ATI Multimedia Center™ TV Dashboard	
14	Show MultView™
15	Channel Surf
16	TV Listings
17	TV Setup
18	Position
19	Jog/Shuttle
20	Time Mode
21	Channel Number
22	TV Volume Control

### ***Start TV from LaunchPad***

- On the ATI Multimedia Center™ Launchpad, click the **TV** button. The [ProductName] dashboard and display window opens.

### ***Start TV from the Windows® taskbar***

- 1 In the Windows taskbar, click **Start**, and then point to **Programs**.
- 2 Point at **ATI Multimedia Center™**, and then select **TV**. The TV dashboard and display window opens.

### ***Start TV from another ATI Multimedia Center™ feature***

- 1 On either the feature's dashboard or display panel, click the **ATI logo**. The application list opens.
- 2 From the application list, choose **[ProductName]**. The [ProductName] dashboard and display window opens.

### ***Configure TV***

The first time you start TV, the Initialization Wizard starts automatically. You must run the Initialization Wizard before you can use the ATI Multimedia Center™ TV feature.

The Initialization Wizard guides you through:

- Scanning the TV sources on your system for available channels.
- Setting up TV-on-Demand™.

- Activating Parental Controls.
  - Configuring your sound card.
- 1 On the ATI Multimedia Center™ LaunchPad, click the **TV** button.
  - 2 The **Initialization Wizard** starts automatically.
  - 3 Follow the instructions in each screen.
  - 4 To advance to the next screen, click **Next**.
  - 5 In the final screen of the Initialization Wizard, click **Finish**.



If you do not hear TV audio, ensure that the TV is tuned to a broadcasting channel, and that you have made the correct audio connections. For connection information, refer to the Installation and User's Guide for your All-in-Wonder® or TV Wonder™ card.

## Setting up TV

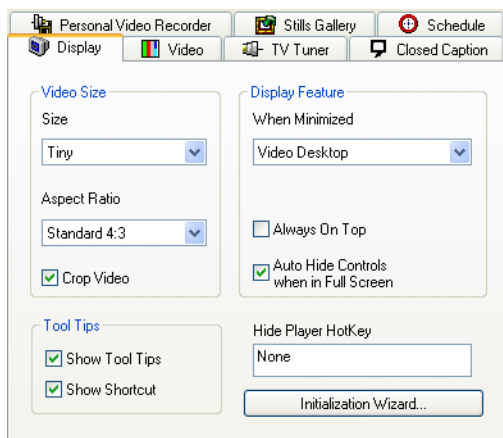
Once you have successfully run the TV Channels Initialization Wizard, you can watch cable or broadcast television in full screen mode or in a resizable window on your system desktop. Several ATI Multimedia Center™ TV features and settings are available through the TV Setup dialog.

You can access different settings in the TV Setup dialog by clicking the following tabs:

- **Display:** To set up the general appearance and functions of your display, choose the TV display size and picture aspect ratio, and open the Initialization Wizard.
- **Picture:** To adjust picture brightness, contrast, saturation, and gamma.
- **Channel List:** To manage your list of channels, display the channels for a specific card when multiple cards are installed on your system, autoscans for channels.
- **Closed Caption:** To specify how closed-captioned text is displayed, and to set up HotWords™ and TV Magazine™.
- **Digital Video Recorder:** To set up the recording quality, system settings, and duration for the Digital Video Recorder.
- **Stills Gallery:** To save TV images in a variety of graphics formats and sizes.
- **Schedule:** To play recorded files and watch or record selected TV channels. You can also set schedules through TV Listings.
- **Audio:** Set up audio features and options.

## Display Tab

Use the Display tab to control the way TV video is displayed. You can change the size and aspect ratio of the TV display, select display options, make the TV dashboard tooltips active, and reinitialize the TV feature with the TV Initialization Wizard.



---

### TV Setup: Display Tab

---

#### *Change the video display window size*

The video size settings include controls for the size of the display window and the aspect ratio (ratio of width to height) of the video image.

- 1 On the TV Setup dialog, click the **Display** tab.
- 2 In the Video Size section, open the **Panel Size** list and choose one of the following size settings:
  - **Tiny** (20% of desktop)
  - **Small** (40% of desktop)
  - **Medium** (60% of desktop)
  - **Large** (80% of desktop)
  - **Native** (Native resolution of video)
  - **User Defined**: Set when you drag the display window open manually.
  - **Full Screen**

- 3 Open the **Picture Aspect Ratio** list and choose one of the following settings:
  - **Non-Fixed**
  - **Auto**
  - **Standard 4:3**
  - **Letter Box 16:9**
  - **Letter Box 1.85:1**
  - **Letter Box 2.35:1**
  - **Wide Screen 16:9**
  - **Wide Screen 1.85:1**
  - **Wide Screen 2.35:1**
- 4 For either Non-Fixed or Auto Aspect Ratio settings, to crop the video, check the **Crop Picture** option.



Use the Crop Picture option for pictures where the video image is black or distorted at the edges.

### ***Choose display options***

The Display Options section lets you select how ATI Multimedia Center™ TV behaves during regular operation.

- 1 On the TV Setup dialog, click the **Display** tab.
- 2 In the Options section, choose from the following options:
  - **Always On Top:** Displays TV on top of all other applications.
  - **Auto Hide Controls when in full screen:** Hides TV controls when displaying TV in full screen.
- 3 Open the **When Minimized** drop-down menu and choose one of the following features:
  - **Minimize TV:** TV feature minimizes like any other Windows® application.
  - **Video Desktop:** Replaces your current Windows® desktop with the ATI Multimedia Center™ TV video display.
  - **ThruView Desktop:** Blends the TV display with your desktop.
  - **ThruView Window:** Blends the TV display with the current window.

### ***Change the TV dashboard tool tip information***

- 1 On the TV Setup dialog, click the **Display** tab.
- 2 In the Tool Tips section, choose from the following options:



- **Show Tool Tips:** Show tool tips when you point at controls with your mouse.
- **Show Shortcuts:** Show keyboard shortcuts when you point at controls with your mouse.

## Using the Initialization Wizard

The first time you start TV, the Initialization Wizard starts automatically and guides you through setting up TV channels, parental controls, and TV-on-Demand™.

You should rerun the TV Initialization Wizard whenever you:

- Add a second All-in-Wonder® or TV Wonder™ card to your system.
- Upgrade your TV signal source from analog to digital.
- Customize your TV-on-Demand™ settings.
- Change parental controls.
- Setup analog audio.

### ***Start the Initialization Wizard***

- 1** On the TV Setup dialog, click the **Display** tab.
- 2** In the lower-left of the Display dialog, click the **Initialization Wizard** button. The TV Connection Wizard opens.
- 3** Follow the instructions for each of the screens in the TV Connection Wizard.
- 4** To advance to the next screen, click **Next**.

### ***Run Autoscan***

Autoscan searches through the range of available channels and adds them to the list of channels in the TV Setup dialog under the Channel List tab. You should run Autoscan whenever you add new TV hardware or upgrade your TV connections.

- On the Initialization Wizard, click the **Autoscan** button. Autoscan sweeps through the channel signals and identifies the available channels.



You can also run autoscan from the TV Setup dialog under the Channel List tab.

### ***Set up TV-on-Demand™***

TV-on-Demand™ lets you pause a live program, return later, and resume watching where you left off by storing a portion of the program on your local hard disc. You can use the Initialization Wizard to change the drive and to adjust the amount of disk space reserved for TV-on-Demand™.

- 1 On the TV Setup dialog, click the **Display** tab.
- 2 Click the **Initialization Wizard** button. The Initialization Wizard opens showing the Scan for Channels screen.
- 3 Click **Next**.
- 4 The Initialization Wizard shows the TV-on-Demand page.
- 5 Use the **Maximum duration to allocate** slider to choose the allocation time.
- 6 To preserve TV-on-Demand™ programs between sessions, check the option box.
- 7 Click **Next** until you reach the End of Initialization Wizard.
- 8 Click **Finish**.

### ***Setup parental controls***

- 1 On the TV Setup dialog, click the **Display** tab.
- 2 Click the **Initialization Wizard** button. The TV Initialization Wizard opens.
- 3 Click **Next**.
- 4 In the Parental Control Initialization screen, check the **Enable Parental Control** option. The Set Password dialog opens.
- 5 In the **Password** box, enter a numerical password.
- 6 In the **Confirm Password** box, retype your numerical password exactly as you did in the Password box. Be sure to note your Parental Controls password.
- 7 Click **OK**.
- 8 Click **Finish**. You can now use your parental control password to control access to the TV channels you choose.

**Configure parental controls**

- 1 On the TV Setup dialog, click the **Display** tab.
- 2 Click the **Initialization Wizard** button. The TV Initialization Wizard opens.
- 3 Click **Next** twice.
- 4 In the Parental Control Initialization screen, click the **Settings** button. The **Password** box opens.
- 5 Enter your password and click **OK**. The Parental Control Configuration dialog opens.
- 6 Follow the instructions in the Parental Control Configuration dialog.
- 7 Move the slider from left to right to choose from 6 control levels:

Control Level	Audience Level
0	No parental control
1: TV-Y	All children
2: TV Y-7	Directed to older children
3: TV-G	General Audience
4: TV-PG	Parental Guidance Suggested
5: TV-14	Parents Strongly Cautioned
6: TV-MA	Mature Audience Only

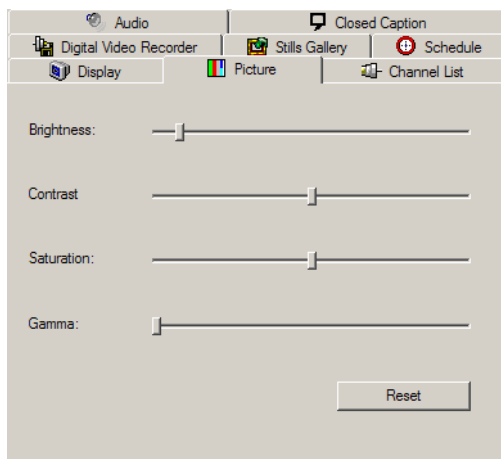
- 8 When you have selected the control level you want, click **OK**.
- 9 Click **Next**.
- 10 Click **Finish**.



For more information about the content allowed by each control level, see the Description section on the Parental Control Configuration dialog.

**Picture Tab**

The picture tab allows you to adjust several of the video settings for the TV display. You can use the picture settings tab to adjust brightness, contrast, saturation, and gamma settings.



---

### TV Setup: Picture Tab

---

#### *Setup video properties*

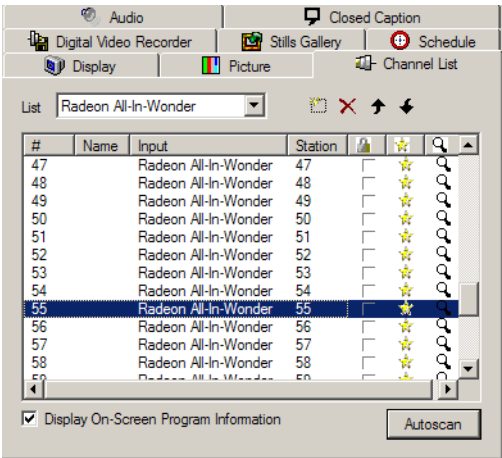
- 1 On the TV Setup dialog, click the **Picture** tab.
- 2 Use the slide controls to adjust the following video properties:
  - **Brightness:** Adjusts the amount of white in the image.
  - **Contrast:** Adjusts the gradation of tones between light and dark areas.
  - **Saturation:** Adjusts the amount of color in the image.
  - **Gamma:** Corrects the overall brightness of the image.
- 3 When you have finished adjusting your video properties, click **OK**.
- 4 To return the video properties to their original settings, click **Reset**.

## Channel List Tab

The Channel List tab provides several features for managing your TV channels and connections. The autoscanner feature is used to scan for TV channels and create a list of available channels. When you have more than one All-in-Wonder® or TV Wonder™ card that use different connections (digital and analog), you can include channels from both sources and select the way channels are listed. Other features allow you to use parental controls to lock a channel and change a station number.

In the Channel list, you can either apply or edit these items:

- Parental controls
- Favorite channels
- Channel surfing
- Channel numbers
- Channel names



TV Setup: Channel List Tab

**Choose a channel list**

When you have more than one TV Wonder™ or All-in-Wonder® card on your system you can use the List menu to organize your system’s TV channels in different ways.

- 1 On the TV dashboard, click the **Setup** button.
- 2 On the TV Setup dialog, click the **Channel List** tab.
- 3 Open the **List** drop-down menu and choose one of the following channel lists:

<b>Offset Channel List</b> <b>(Two or more TV cards)</b>	The offset option lists all channels from independent sources. Analog channels are assigned single part numbers. Digital channels are numbered in a 10,000 and higher range.
<b>Combined Channel List</b> <b>(Two or more TV cards)</b>	The combined option lists all channels from independent sources. Channels are assigned two-part numbers.

<b>Connectors</b>	Lists the available connections on your system (i.e. S-Video and Composite for each source).
<b>Digital</b>	Lists the available channels from a digital source.
<b>Analog</b>	Lists the available channels from an analog source.

### ***Autoscan for active channels***

Autoscanning searches for all available channels and shows them in the channel list.

- 1 On the TV dashboard, click the **Setup** button or on your keyboard press **Ctrl + S**.
- 2 On the TV Setup dialog, click the **Channel List** tab.
- 3 In the lower-right of the Channel List tab, click the **Autoscan** button. Autoscan scans your system for the available channels and displays them in the channel list.

### ***Change a channel name***

- 1 On the TV dashboard, click the **Setup** button.
- 2 On the TV Setup dialog, click the **Channel List** tab.
- 3 In the Channel list, click in the **Name** column for the channel you want to name.
- 4 At the insertion point, type a name for the selected channel.
- 5 Press **Enter**. The channel name is shown in the Channel List.

### ***Change a channel number***

- 1 On the TV dashboard, click the **Setup** button.
- 2 On the TV Setup dialog, click the **Channel List** tab.
- 3 In the Channel list, click in the **#** column for the channel number you want to change.
- 4 At the insertion point, type the number you want to assign to the channel.
- 5 Press **Enter**. The channel number is shown in the Channel list.

### ***Assign a station to a channel number***

- 1 On the TV dashboard, click the **Setup** button.
- 2 On the TV Setup dialog, click the **Channel List** tab.

- 3 In the Channel list, click in the **Station** column for the station number you want to assign.
- 4 From the Station shortcut list, select the station you want to assign. The station is assigned the channel number you selected.

### ***Lock a channel***

- 1 On the TV dashboard, click the **Setup** button.
- 2 On the TV Setup dialog, click the **Channel List** tab.
- 3 In the Channel list, check the **Lock box** for the station you want to lock. The station is locked by parental controls.

### ***Edit your favorite channels list***

- 1 On the TV dashboard, click the **Setup** button.
- 2 On the TV Setup dialog, click the **Channel List** tab.
- 3 In the Channel list, click on the **star icon** for the station you want to remove from your favorite channel list.



In the ATI Multimedia Center™ dashboard, the channel up/down command skips channels without a star next to them.

### ***Edit your channel surfing list***

- 1 On the TV dashboard, click the **Setup** button.
- 2 On the TV Setup dialog, click the **Channel List** tab.
- 3 In the Channel list, click on the **magnifying glass icon** for the station you want to remove from your channel surfing list.



In the ATI Multimedia Center™ Channel Surf window, channels without magnifying glass icons next to them are not shown.

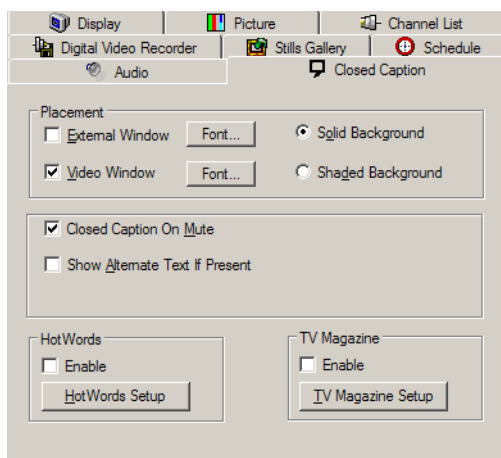
### ***Display on-screen program information***

- 1 On the TV dashboard, click the **Setup** button.
- 2 On the TV Setup dialog, click the **Channel List** tab.
- 3 In the lower-left of the Channel List tab, check the **Display On-Screen Program Information** box.
- 4 Click **OK**. The channel information is shown on-screen when you change channels.

## Closed Caption Tab

Use the Closed Caption tab to configure how closed captions are displayed when you view a TV broadcast. Under the Closed Caption tab, you can set closed caption placement and behavior, and setup the HotWords™ and TV Magazine™ special features.

The HotWords™ feature detects words or phrases that appear in closed caption text. TV Magazine™ transcribes closed captions, including pictures and text, and saves on your hard drive in Rich Text Format (RTF), plain text (TXT), or HTML file formats.



---

**TV Setup: Closed Caption Tab**

---

### ***Choose closed caption placement.***

You can set TV closed captions to play inside the video window or in an external window or both.

- 1 On the TV dashboard, click the **Setup** button. The TV Setup dialog opens.
- 2 Click the **Closed Caption** tab.
- 3 In the Placement section, choose from the following placement options:
  - **External Window:** Displays closed captions in an external window
  - **Video Window:** Displays closed captions inside the video window.



- 4 On the TV Setup dialog click **OK**.

### ***Change closed caption fonts.***

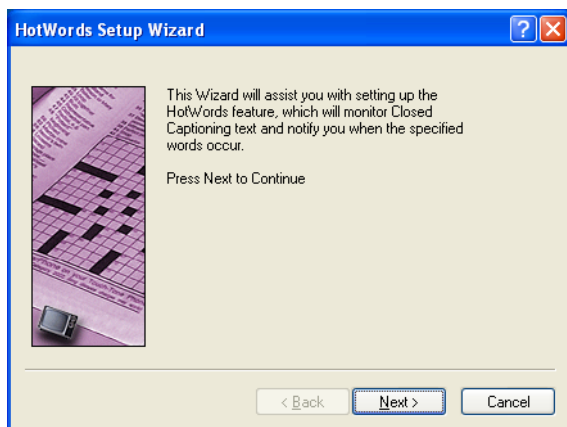
- 1 On the TV dashboard, click the **Setup** button. The TV Setup dialog opens.
- 2 Click the **Closed Caption** tab.
- 3 In the Placement section, change the closed caption font for either video window or external window, click the **Font** button. A font window opens.
- 4 In the font window, select the font, size and style you want and then click **OK**. The font window closes.
- 5 On the TV Setup dialog click **OK**.

### ***Choose closed caption options.***

- 1 On the TV dashboard, click the **Setup** button. The TV Setup dialog opens.
- 2 Click the **Closed Caption** tab.
- 3 In the lower part of the Closed Caption tab, choose from the following options:
  - **Solid Background:** Displays closed-captioned text over a solid background (for closed caption window only).
  - **Shaded Background:** Displays closed-captioned text over a shaded background (for closed caption window only).
  - **Closed Caption On Mute:** Displays closed-captioned text automatically whenever the TV audio is muted.
  - **Show Alternate Text If Present:** If the caption stream has T1 mode closed-captioned data, check this box to display a full page of text. When Closed Captioning is off, or you change channels, this page is hidden.
- 4 On the TV Setup panel, click **OK**.

## **Setting up HotWords™**

HotWords™ detects words or phrases that appear in closed caption text and notifies you when a specified word occurs. You use the HotWords™ setup Wizard to specify the words and phrases that TV will detect in the closed caption text.



---

### TV Setup: HOTWORDS Wizard

---

#### **Set up HotWords™**

- 1 On the TV Setup dialog, click the **Closed Caption** tab.
- 2 In the HotWords section, click the **Enable HotWords** check box. The HotWords™ Setup Wizard opens.
- 3 The HotWords™ Wizard assists you with the HotWords™ features. Follow the instructions in each Wizard screen.
- 4 To advance to the next screen, click the **Next** button.

#### **Create HotWords™**

The HotWords™ Setup Wizard lets you specify the words and phrases that TV will detect in closed-captioned text and add them to a list of hot words. You can also assign attributes to your hot words.

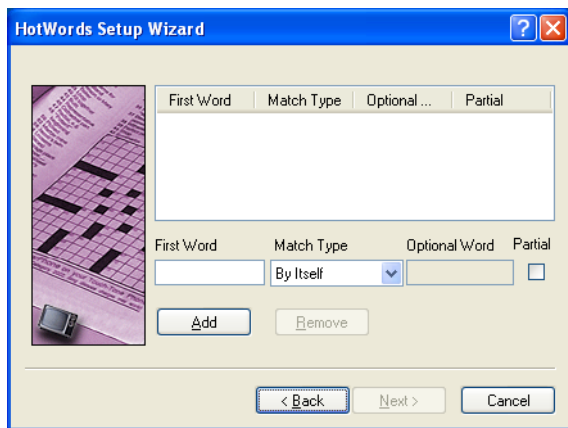
- 1 On the TV dashboard, click the **Setup** button. The TV Setup dialog opens.
- 2 Click the **Closed Caption** tab.
- 3 In the HotWords™ section, click the **HotWords™ Setup** button. The HotWords™ Setup Wizard opens.
- 4 Click **Next**. The two-step HotWords™ Setup Wizard guides you through HotWords™ setup.
  - **First Word:** Type the word you want to add to your HotWords™ list.

- **Match Type:** From the Match Type drop-down list, choose one of the following match options:
    - **By itself:** Reports a single instance of the word.
    - **Followed By:** Reports a hot word when ever it occurs and is followed immediately by the specified optional word.
    - **Not Followed By:** Reports a hot word only if it is not immediately followed by an optional word.
    - **In Sentence With:** Reports a hot word, if it occurs anywhere in a sentence with the optional word.
  - **Optional Word:** Type the word you want to match with the Hot Word. When you specify an optional word, the system looks for the hot word and the optional word combination as you have specified with the Match Type drop-down list.
  - **Partial:** Check this box to report when a part of the hot word occurs.
- 5** When you have finished setting the attributes for your new HotWords™, click the **Add** button. Your new word is added to the HotWords™ list. The attributes you specified for the word are shown in the Match Type, Optional, and Partial columns in the HotWords™ list window.

### ***Change your HotWords™ with the setup wizard***

Whenever you want to change your HotWords you can run the HotWords™ Setup Wizard again.

- 1** On the TV dashboard, click the **Setup** button. The TV Setup dialog opens.
- 2** Click the **Closed Caption** tab.
- 3** In the HotWords™ section, click the **HotWords™ Setup** button. The HotWords™ Setup Wizard opens. Follow the instructions in each Wizard screen to change your HotWords™ settings.
- 4** To advance to the next screen, click the **Next** button.




---

**HotWords™ Wizard: Second Screen**

---

### ***Remove words from the HotWords™ list***

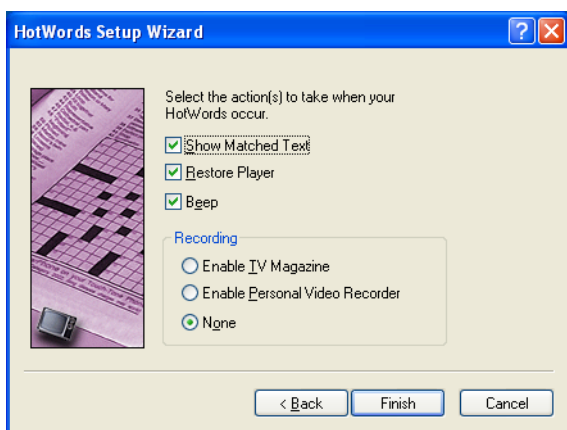
- 1 On the TV dashboard, click the **Setup** button. The TV Setup dialog opens.
- 2 Click the **Closed Caption** tab.
- 3 In the HotWords section, click the **HotWords™ Setup** button. The HotWords™ Setup Wizard opens.
- 4 Click **Next**. The HotWords™ Setup Wizard lists all of the words in the system.
- 5 In the the HotWords™ list, click on the hot word you want to remove.
- 6 Click the **Remove** button. The word and its attributes are removed from the list.
- 7 Click **Next**.
- 8 Click **Finish**.

### ***Choose HotWords™ actions***

You can specify the action that takes place whenever one of your hot words occurs in the closed captions text. The HotWords™ Setup Wizard provides both system and recording options.

- 1 On the TV dashboard, click the **Setup** button. The TV Setup dialog opens.
- 2 Click the **Closed Caption** tab.

- 3 In the HotWords section, click the **HotWords Setup** button. The HotWords™ Setup Wizard opens.
- 4 Click **Next**.
- 5 In the HotWords™ Setup Wizard, choose from the following action options:
  - **Show Matched Text:** Displays the text that matches hot words.
  - **Restore Player:** Opens TV in its current state.
  - **Beep:** The system beeps when a HotWord occurs.
- 6 In the Recording section, choose one of the following recording options:
  - **Enable TV Magazine™:** Activates TV Magazine™.
  - **Enable Personal Video Recorder:** Activates the Digital Video Recorder.
  - **None:** Hot words are not recorded.
- 7 Click **Finish**.



---

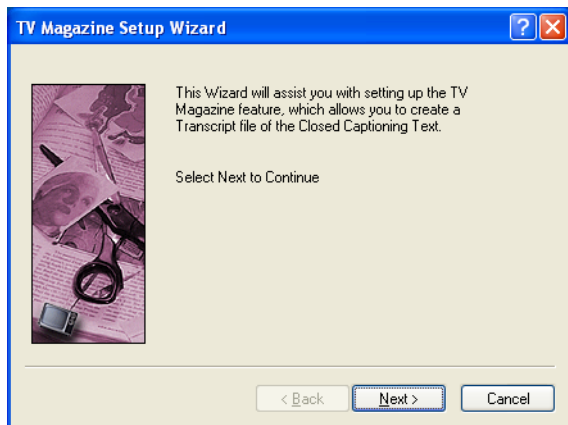
**HotWords™ Wizard: Final Screen**

---

## Using TV Magazine™

TV Magazine™ lets you transcribe closed-captioned broadcasting including pictures and text. You can save files as Rich Text Format (RTF), plain text (TXT), or HTML. When TV Magazine™ is enabled, it transcribes closed-captioned text even if the Closed Captioning button is

off. The first time you use TV Magazine™, the two-step TV Magazine™ Setup Wizard guides you through the setup process.



---

#### TV Setup: TV Magazine™ Wizard

---

### Set up TV Magazine™

- 1 On the TV Setup dialog, click the **Closed Caption** tab.
- 2 In the TV Magazine™ section, click the **TV Magazine™ Setup** box. The TV Magazine™ Setup Wizard opens.
- 3 The TV Magazine™ Setup Wizard assists you with the TV Magazine™ feature. Follow the instructions in each Wizard screen.
- 4 To advance to the next screen, click the **Next** button.



When TV Magazine™ is enabled, it transcribes closed-captioned text even if the Closed Captioning button is off.

### Start the TV Magazine™ setup wizard

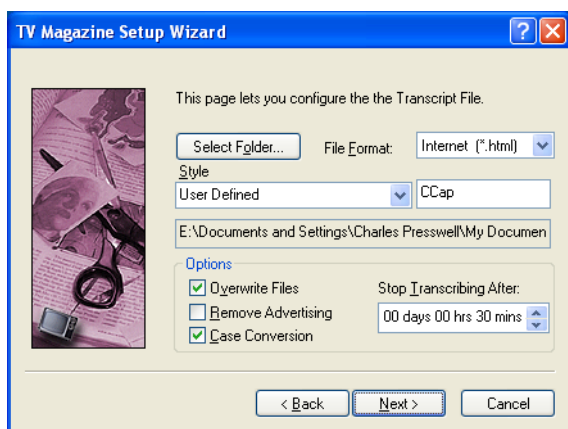
- 1 On the TV dashboard, click the **Setup** button. The TV Setup dialog opens.
- 2 Click the **Closed Caption** tab.
- 3 In the TV Magazine™ section, click the **TV Magazine™ Setup** button. The TV Magazine™ Setup Wizard opens.

**Configure TV Magazine™ transcript file**

- 1 On the TV dashboard, click the **Setup** button. The TV Setup dialog opens.
- 2 Click the **Closed Caption** tab.
- 3 In the TV Magazine™ section, click the **Enable** box. The TV Magazine™ Setup Wizard opens.
- 4 On the TV Magazine™ Wizard click **Next**. The Wizard advances to the next screen.
- 5 Click the **Select Folder** button. The Browse for Folder window opens.
- 6 In the Browse for Folder window, choose a location to save your TV Magazine transcript files.
- 7 In the File Format drop-down list, choose one of the following formats:
  - Plain Text (.txt)
  - Rich Text (.rtf)
  - Internet (.html)
- 8 Open the Style drop-down list and select a style for your TV Magazine transcript file names.
- 9 In the Options section, choose from the following transcript file options:
  - **Overwrite Files:** To overwrite files, check the Overwrite Files box. To keep files, clear the Overwrite Files box.
  - **Remove Advertising:** Skips commercial advertising when displaying or transcribing closed-captioned text. This option works best with programs that use scrolling transcripts rather than text bubbles to record closed-captioned text; for example, talk shows, news broadcasts, sports, and soap operas.
  - **Case Conversion:** Converts all characters to either upper or lower case.
- 10 In the **Stop Transcribing After** box, set the length of time you want to record text.
- 11 When you have finished choosing options TV Magazine™ transcript options, click **Next**.
- 12 Click **Finish**.



Commercials may occasionally be recorded depending on the closed-captioning format - a little experimentation can show you how to get the best results.




---

#### TV Magazine™ Wizard: Second Screen

---

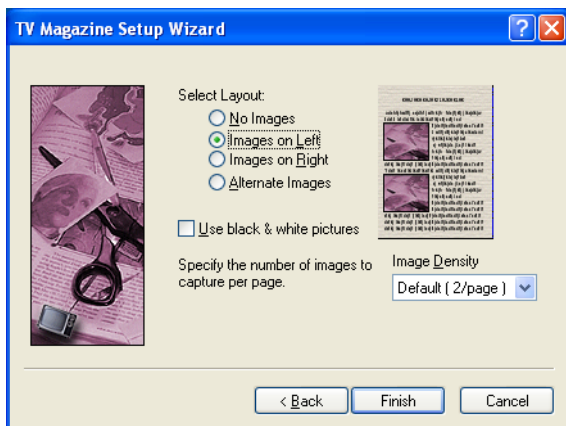
### Set transcript file page layout

- 1 On the TV dashboard, click the **Setup** button. The TV Setup dialog opens.
- 2 Click the **Closed Caption** tab.
- 3 In the TV Magazine™ section, click the **TV Magazine™ Setup** button. The TV Magazine™ Setup Wizard opens.
- 4 On the TV Magazine™ Wizard click **Next**. The Wizard advances to the second screen.
- 5 Click **Next** again. The Wizard advances to the final screen.
- 6 In the Select Layout section, choose one of the following options:
  - **No Images:** Saves no images.
  - **Images on Left:** Places images on the left and text on the right.
  - **Images on Right:** Places images on the right and text on the left.
  - **Alternate Images:** Places images and text in alternating left and right sides of the page.



- **Use black & white pictures:** Saves images in black & white.
- **Image Density:** Specifies the number of images per page.

7 Click **Finish**.



---

**TV Magazine™ Wizard: Page Layout Screen**

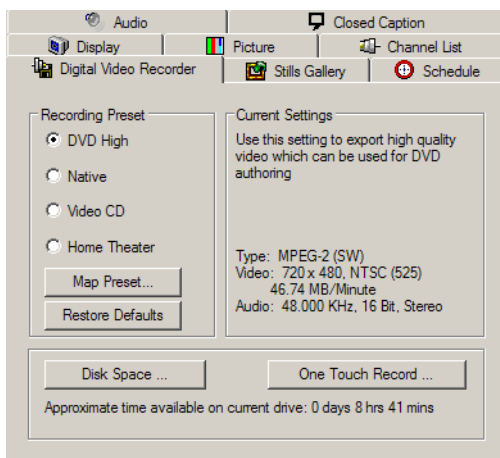
---

## Digital Video Recorder Tab

You can record full-motion video with audio from multiple sources to your computer's hard disk. Use the controls and options under the Digital Video Recorder Tab to set up TV video and audio recording. You can change disk space settings, set up one touch recording, and save video in the following file formats:

- Moving Pictures Experts Group (MPEG)
- Audio-Video Interleaved (AVI)
- Windows Media Video (WMV)

The Digital Video Recorder tab also provides recording presets that you can customize and save for future recording sessions.




---

### TV Setup: Digital Video Recorder Tab

---

#### ***Choose a recording preset***

Choose a recording preset to optimize recording for different recording purposes.

- 1 On the TV dashboard, click the **Setup** button. The TV Setup dialog opens.
- 2 Click the **Digital Video Recorder** tab.
- 3 In the Recording Preset section, choose one of the following preset options:
  - **DVD High:** To record high quality video for DVD authoring.
  - **Native:** To record video in its native format.
  - **Video CD:** To record video for Video CD authoring.
  - **Home Theater:** To export to MPEG-4 format for Home Theater quality.



The Current Setting section reports the features and specifications for the selected Recording Preset.

### ***Map recording presets***

You can change presets in the Recording Preset section to handle different recording settings.

- 1 On the TV dashboard, click the **Setup** button. The TV Setup dialog opens.
- 2 Click the **Digital Video Recorder** tab.
- 3 In the Recording Preset section, choose the preset you want to change.
- 4 Click the **Map Preset** button. The Edit Preset Settings dialog opens with the preset you selected highlighted in the list.
- 5 Scroll through the list, and select a different preset.
- 6 Click **OK**. The Recording Presets dialog closes and the preset you selected is shown as a preset option in the Recording Preset list.

### ***Create a new recording preset***

Advanced users can create new presets to handle different recording settings with the Recording Wizard.

- 1 On the TV dashboard, click the **Setup** button. The TV Setup dialog opens.
- 2 Click the **Digital Video Recorder** tab.
- 3 In the Recording Preset section, click the **Map Preset** button. The Edit Presets Settings dialog opens.
- 4 In the Recording Wizard preset list, double-click the preset you want to base your new preset on. The Recording Wizard opens.
- 5 Follow the instructions in the Recording Wizard.
- 6 To advance to the next screen in the Recording Wizard, click **Next**.
- 7 In the final screen of the Recording Wizard, click **Finish**. The Recording Wizard closes and your new preset is shown in the Edit Preset Settings list.
- 8 On the Edit Preset Settings dialog, click **OK**. Your new preset is listed as a preset in the TV setup dialog under the Digital Video Recorder tab.

### ***Restore default recording presets***

- 1 On the TV Setup dialog, click the **Digital Video Recorder** tab.
- 2 In the Recording Preset section, click the **Restore Defaults** button.

### ***Change disk space settings***

You can change the amount of system disk space available for the personal video recorder.

- 1** On the TV dashboard, click the **Setup** button. The TV Setup dialog opens.
- 2** Click the **Digital Video Recorder** tab.
- 3** In the lower-left of the Digital Video Recorder tab, click the **Disk Space** button. The Disk Space Settings dialog opens.
- 4** Follow the instructions on the Disk Space Settings dialog.
- 5** To increase the amount of disk space, move the slider to the right.
- 6** Click **OK**. Your digital video will be stored to the drive you have chosen.

### ***Setup one-touch recording***

Use the one-touch record feature to record video with a single click on the TV dashboard. Through One Touch Record Settings dialog you can set custom duration times, save recorded video to a folder of your choice, and name your one-touch files.

- 1** On the TV dashboard, click the **Setup** button. The TV Setup dialog opens.
- 2** Click the **Digital Video Recorder** tab.
- 3** In the lower-left of the Digital Video Recorder tab, click the **One Touch Record** button. The One Touch Record Settings dialog opens. You can change any of the following record settings:
  - **Record for:** The record duration time.
  - **Folder for Recorded File:** The folder in which to save recorded video.
  - **Recorded File Name:** The name for your recorded video.
- 4** When you have completed your setup, click **OK**. The One Touch Record Settings dialog closes.
- 5** On the TV Settings dialog, click **OK**.
- 6** To start one-touch recording, on the TV dashboard, click the **Start recording** button.

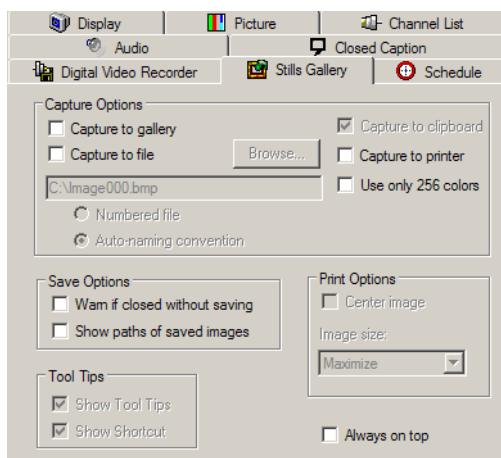


You can also setup one touch recording by right-clicking the Start recording button to select record duration and to access the One Touch Record Settings dialog.

## Stills Gallery Tab

Capture full-color, 24-bit still images from television and save them on your computer's hard drive. You can place images on the system clipboard, or show them as thumbnail images in the stills gallery. You can change the way the stills gallery saves and prints your captured images. You can also choose capture, save, and print options and change the information shown in the stills gallery tool tips.

The stills gallery supports Windows-standard bitmaps (.bmp) and other graphics file formats. You can insert saved images into reports, presentations, emails, and other documents.



---

### TV Setup: Stills Gallery Tab

---

#### *Select capture options*

- 1 On the dashboard, click **Setup**.
- 2 Click the **Stills Gallery** tab.
- 3 In the Capture Options section, choose from the following options:

- **Capture to gallery:** Captures still images to the stills gallery.
- **Capture to file:** Captures still images to a file folder of your choosing.
- **Numbered file:** Stores captured images in numbered files (pic001.bmp, pic002.bmp, and so on) on your hard drive.
- **Auto-naming convention:** Stores captured images as auto-named files on your hard disk.
- **Capture to clipboard:** Places captured images on the Windows Clipboard.
- **Capture to printer:** Send the captured image to a printer.
- **Use only 256 colors:** Saves captured images as 256-color files in order to save space.

### ***Set up save options***

- 1 On the dashboard, click **Setup**.
- 2 Click the **Stills Gallery** tab.
- 3 In the Capture Options section, choose from the following options:
  - **Warn if closed without saving:** Alerts you if you close the stills gallery without saving captured images.
  - **Show paths of saved images:** Display the drive, folders, and subfolders that contain your saved images.
- 4 When you have selected the options you want, click **OK**.

### ***Set up tool tip options***

- 1 On the dashboard, click the **Setup** button.
- 2 Click the **Stills Gallery** tab.
- 3 In the Tool Tips section, check or clear the following options:
  - **Show Tool Tips:** Displays tool tips while in the stills gallery.
  - **Show Shortcut:** Displays shortcut keys while in the stills gallery.
- 4 When you have selected the tool tip options you want, click **OK**.

### ***Select print options***

- 1 On the dashboard, click **Setup**.
- 2 Click the **Stills Gallery** tab.
- 3 In the Print Options section, choose from the following print options:  
**Center image:** Centers stills gallery images.

**Image size:** Chooses an image print size from the following:

- **Maximize:** Prints in full-page format.
- **One to One:** Prints in the same size as original image.
- **Double:** Prints at twice the original size.

## Schedule Tab

Use the Schedule tab to activate events on the dates and times you specify. You can schedule events for Television, CD Audio, File Player, TV Magazine™, Video Capture, and Video CD.

You can run a scheduled event immediately, at some time in the future, or every time Windows® is started. To run a scheduled event when Windows® starts, install the scheduler in your Windows® startup file. For more information, see Windows® online help.

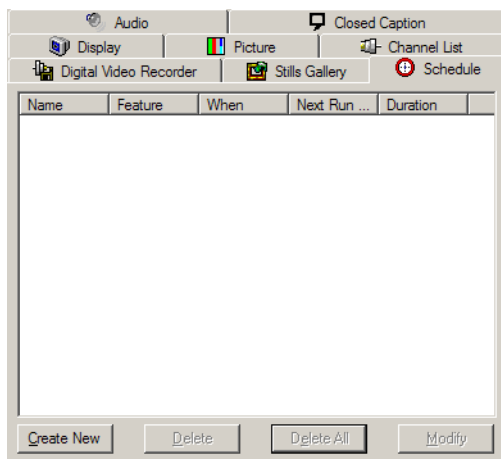
To create scheduled events, use the Schedule Wizard, which guides you step by step through the event creation procedure.

The Schedule tab dialog lists the following information for all of the events you have created:

- Event name.
- Related ATI Multimedia Center™ feature.
- When the event is scheduled to run.
- The next time the event will run.
- Duration of the event.



Events whose dates have passed are not automatically removed. They can be deleted or reactivated by setting a new run time.



---

### TV Setup: Stills Gallery Tab

---

#### ***Open the schedule setup***

- 1 On the TV, CD Audio, File Player, DVD, Video CD, or EazyConnect™ dashboard, click the **Setup** button. The Setup dialog opens.
- 2 In the Setup dialog, click the **Schedule** tab.

#### ***Create a scheduled event***

- 1 On the dashboard, click the **Setup** button or type **Ctrl + S**. The Setup dialog opens.
- 2 On the setup dialog, click the **Schedule** tab.
- 3 In the lower-left of the Schedule page, click the **Create New** button. The Schedule Wizard opens.
- 4 The Schedule Wizard guides you step-by-step through the new schedule creation procedure. After you have set the information in each Schedule Wizard screen, click the **Next** button to advance to the next step.
- 5 In the final screen click **Finish**. The wizard closes and your new event is listed in the Schedule tab window.



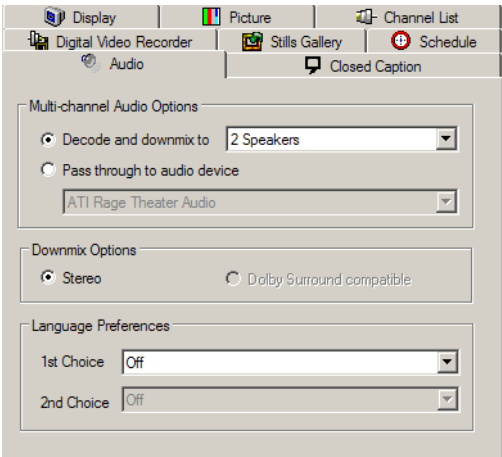
**Manage scheduled events**

The following table lists the Schedule dialog buttons for managing Scheduled events.

Schedule Tab Button	Function
Create New	Opens the Schedule Wizard so you can create a new scheduled event.
Delete	Deletes a selected event from the Schedule window.
Delete All	Deletes all scheduled events in the Schedule window.
Modify	Opens the Schedule Wizard for a selected event.

**Audio Tab**

Use the Audio tab to setup the audio for your ATI Multimedia Center™ TV feature. You can choose Multi-channel audio options, select a Downmix option, and set Language Preferences.



**TV Setup: Audio Tab**

**Open audio setup**

- 1 On the ATI Multimedia Center™ TV dashboard, click the **Setup** button. The Setup dialog opens.

- 2 In the Setup dialog, click the **Audio** tab.



Be sure your sound card is connected to your system and setup correctly in Windows®. The Audio tab appears in the TV setup dialog only if your system audio is working correctly.

Select multi-channel audio options

- 1 On the ATI Multimedia Center™ TV dashboard, click the **Setup** button.
- 2 In the TV Setup dialog, click the **Audio** tab.
- 3 In the **Multi-channel Audio Options** section choose from the following options:

Setting	Function
<b>Decode and down-mix to</b>	Converts an AC-3 audio stream to Pulse Code Modulation (PCM - a method of digital encoding) and down-mixes it to 2, 4, or 6 speakers.
<b>Pass through to audio device</b>	<p>The audio decoder “passes through” non-PCM multichannel audio to an audio device that supports AC-3 input.</p> <ul style="list-style-type: none"> <li>• This option is available when there is a compatible S/PDIF audio device on your system, and you have selected the Pass through option.</li> </ul>

### Select Downmix options

- 1 On the ATI Multimedia Center™ TV dashboard, click the **Setup** button.
- 2 In the TV Setup dialog, click the **Audio** tab.
- 3 In the **Downmix Options** section choose from the following options:

Setting	Function
<b>Stereo</b>	Plays audio in 2-channel stereo.
<b>Dolby® Surround compatible</b>	Plays audio using Dolby® Surround.

**Select language preferences**

- 1 On the ATI Multimedia Center™ TV dashboard, click the **Setup** button.
- 2 In the TV Setup dialog, click the **Audio** tab.
- 3 In the **Language Preferences** section choose from the following options:

Setting	Function
1st Choice	Select your first language preference.
2nd Choice	Select your second language preference.

**Using the TV Dashboard**

Use the ATI Multimedia Center™ TV dashboard to control TV directly from your desktop and to access all of the special TV features. You can perform all the basic TV functions such as changing channels, adjusting and muting the volume, and starting closed captions.


You can also use the TV dashboard to start and control the advanced TV features such as the channel surfing, TV-on-Demand™, one-touch recording, still image capture, zoom and unzoom, and TV Listing.

**Change TV channels**

- On the TV dashboard, click the **Channel Up** or **Channel Down** button.
- On your keyboard, press the number keys for the channel you want to view.

**Surf TV channels**

- 1 On the TV dashboard, click the **Channel Surf** button. All available channels appear as thumbnail images in the video window.
- 2 Double-click the thumbnail channel that you want to view. Your channel fills the TV video window.

 You can change the thumbnail preview time by right-clicking the Channel Surf button on the TV dashboard and selecting a new time from the shortcut menu.

### ***Recall TV channel***

- On the TV dashboard, click the **Channel Recall** button or, on your system keyboard press **Backspace**.

### ***Capture still image from TV***

- On the TV dashboard, click the **Still Capture** button. The Stills Gallery opens showing the captured frame.

### ***Save captured image to the Stills Gallery***

- 1 On the Stills Gallery dialog, click the **Save Image** button. The **Save As** dialog box opens.
- 2 Locate the folder where you want to save the TV Still.
- 3 Click **OK**. The **Save As** dialog box closes and your still capture file is shown in the Stills Gallery.

### ***Zoom or unzoom TV video***

- 1 When the TV video is zoomed, click the **Unzoom** button. The video display returns to the normal zoom level.
- 2 On the TV dashboard, right-click the **Unzoom** button.
- 3 From the shortcut menu, choose one of the following zoom levels:
  - **Zoom 2x**
  - **Zoom 4x**
  - **Zoom 8x**

### ***Start closed captions***

- On the TV dashboard, click the **Closed Captions** button. Or on your keyboard, press **Ctrl + C**.

### ***Change input connectors***

For systems with more than one video source, you can change the video connection with a mouse click.

- 1 On the TV dashboard right-click the **Input Connector**.
- 2 In the shortcut menu, choose one of the following input connections:
  - **Analog TV Tuner**
  - **S-Video**

- **Composite**



You can click through the input connections by clicking the Input Connector button or, on your keyboard, pressing Alt+F7 repeatedly.

### ***Mute TV volume***

- On the TV dashboard, click the **Audio** button. The TV Volume is turned off.
- When you right-click the Audio button you can choose from the following Audio options:
  - **Captions when muted:** Activates closed captions when mute is on.
  - **Stereo:** Enables stereo TV sound.
  - **Both:** Plays mono in the left channel and SAP in the right channel. This option is not available for all hardware.
  - **SAP:** Enables Secondary Audio Program.
  - **Mono:** Enables monaural TV audio.
  - **Mute audio during scheduled record:** When you use the ATI Multimedia Center™ Scheduler, mutes the audio while programs are recorded.

## **TV-on-Demand™**

TV-on-Demand™ lets you pause a live program, return later, and resume watching where you left off. You can view the show from the beginning, even after it has started, without waiting until the whole program is recorded. You can back up a program and watch the selected portion again, fast-forward or skip ahead to the live broadcast.

After running the TV Initialization Wizard, the TV-on-Demand™ features are available on the TV dashboard. TV-on-Demand™ is always on except when:

- The Digital Video Recorder is not set to Native.
- TV is in channel surf mode.
- You are using an S-Video/Composite connection that is not time-shiftable.
- Your system is equipped with VIVO devices. For example, a capture card having no tuner, only S-Video and/or Composite out.

## ***Pause TV video***

The Pause button is available with TV-on-Demand™. In TV-on-Demand™ mode, when you click Pause, the TV video stops.

- To pause TV video, on the TV dashboard, click the **Play/Pause** button or, on your keyboard, press the space bar.

## ***Change playback speed***

- 1 On the TV Dashboard, right-click the **Play Speed** button.
- 2 From the shortcut menu, choose from the following speeds:
  - **Slow Play** (half-speed)
  - **Normal Play**
  - **Fast Play** (1.5 x speed)



You can also click through the play speeds by clicking the Play Speed button or, on your keyboard, pressing Alt+F10 repeatedly.

## ***Skip TV video forwards and backwards***

- 1 On the TV dashboard, click either the **Skip Forward** or the **Skip Backward** buttons. You can change the length of the time segment that the video skips.
- 2 Right-click either the **Skip Forward** or the **Skip Backward** buttons and choose from the following options:
  - **1 Frame:** Skips forward by a single frame.
  - **10 seconds:** Skips forward or backward in ten second segments.
  - **30 seconds:** Skips forward or backward in 30 second segments
  - **1 minute:** Skips forward or backward in one minute segments.
  - **2 minutes:** Skips forward or backward two minute segments.

## ***Move within TV video***

The TV slider and the Jog Shuttle controls let you move backward and forward within the TV video. You can also use the TV dashboard controls to fast forward and reverse the video.

- **TV Slider:** On the TV dashboard, drag the slider to the right or to the left with your mouse.
- **Jog Shuttle:** On the TV dashboard, drag the Jog Shuttle button right or left with your mouse. The video moves fast-forward or fast-rewind.

- 1 On the TV Dashboard, right-click the **Play Speed** button.
- 2 From the shortcut menu choose from the following speeds:
  - Fast Forward 1x
  - Fast Forward 2x
  - Fast Forward 4x
  - Fast Forward 8x
  - Fast Forward 16x
  - Fast Reverse -1x
  - Fast Reverse -2x
  - Fast Reverse -4x
  - Fast Reverse -8x
  - Fast Reverse -16x

### ***Save recorded video in TV-on-Demand™ mode***

- 1 On the TV dashboard, right-click the **Start Recording** button.
- 2 In the shortcut menu click **Record Program**. The Record Program dialog opens.
- 3 In the **Record Program** dialog, select the program segments and set the duration.
- 4 Click **Record**. The recorded video is saved to your local hard disk. You can use the ATI Multimedia Center™ Library feature to change the TV-on-Demand™ video to different video format.

## **TV Out**

You can connect a television set to your computer as the display and use your ATI Multimedia Center™ to view computer output directly on your television in NTSC or PAL formats. Connections can use composite or S-Video and you can display images on the TV and PC monitor simultaneously. The TV Out feature provides a big-screen experience for all PC entertainment. It is ideal for playing games, giving presentations, watching movies, and browsing the Internet.

### ***Enable a television display***

- 1 Before enabling the TV out feature, be sure your TV is correctly connected to your computer. For information on connecting your TV, see your ATI card User's Guide.
- 2 In your Windows® XP task bar, click **Start**.
- 3 In the Start menu, click **Control Panel**.

- 4 In the Control Panel, double-click the **Display** icon.
- 5 In the Display Properties window, click the **Settings** tab.
- 6 Under the Settings tab, click the **Advanced** button.
- 7 In the Advanced Settings window, click the **Displays** tab.
- 8 Click the **TV** button.
- 9 Click **OK**.
- 10 To cancel TV Out, click the TV button again.



For more information about television display, click Desktop Help.

## Multi-Monitor Support

The DVI-I interface on All-in-Wonder® cards can be used to attach a DVI display or an analog monitor, using the supplied DVI-I-to-VGA adapter. HydraVision™ technology supports DVI or CRT monitor and television. To use a secondary display with EazyLook™, both displays must be set as the primary device.



The All-in-Wonder® VE does not support DVI-I. For more information on multi-monitor support see your All-in-Wonder® or TV Wonder™ User's Guides.

## Using MultView™

If you have at least two independent ATI devices, for example an All-in-Wonder® and a TV Wonder™ card installed on your computer, you can watch a different channel in a second window. You can record programming from one card while you watch programming from the other. There are also several functions to control the MultView™ window.

The MultView™ controls include:

- Input Connector
- Channel up/down
- Mute
- Swap (MainTV/MultView™)
- Volume
- Channel status



- Show/Hide controls

You can use the MultView™ window in the following ways:

- **Picture in Picture (PiP):** When the main video window is in full-screen mode, MultView™ opens a Picture-In-Picture (PiP) window within main screen.
- **Picture outside Picture (PoP):** When the main video window is not in full-screen mode, MultView™ opens the second video in a separate window. With dual monitor systems, you can view both video sources in full-screen mode by dragging the MultView™ window from one monitor to the other.

### ***Open the MultView™ window***

- 1 On the ATI Multimedia Center™ TV dashboard, click the **Show MultView™** button or, press **Alt + H**
- 2 To close MultView™, click the **Close** button.

### ***Change the MultView™ window position***

- 1 With the ATI Multimedia Center™ TV in full screen mode, on the TV dashboard, right-click the **Show MultView™** button.
- 2 In the shortcut menu, click **Embedded Location**.
- 3 In the Embedded Location sub-menu, choose one of the following positions:
  - **Top Left**
  - **Top Right**
  - **Bottom Right**
  - **Bottom Left**
  - **Next**

### ***Change the MultView™ window size***

- On the MultView™ TV window, click and drag the window to the size you want.

### ***Auto-hide the MultView™ window controls and border.***

When you click on the MultView™ window, the borders change to red. When you click on the main window, the MultView™ window borders change to black. When the borders are red, a TV channel-change command will change the MultView™ channel.

- The MulTView™ window border disappears automatically after a few seconds of mouse inactivity. To make the border re-appear, move your mouse over the MulTView™ window again.

## TV Keyboard Shortcuts

You can use the following keys to control TV from your keyboard.

Command	Key(s)
Pause	Ctrl + B
Play	Ctrl + X
Toggle Play / Pause	Spacebar
Skip Forwards / Backwards	End / Home
Volume Up / Down	(numeric keypad) - / +, / (alphanumeric keypad) _ / =, - / +
Toggle Mute	(numeric keypad) *
Channel Up/Down	Up/Down Arrow keys
Setup	Ctrl + S
Toggle closed captions	Ctrl + C
Unzoom	Alt + Z
Still capture	Ctrl + Insert
Size presets (Tiny, Small, Medium, Large)	Ctrl + 1 — Ctrl + 4
Toggle full screen	Ctrl + F
Exit full screen	Esc
Cycle through size up / down	Ctrl+↑ / Ctrl+↓
Parental Control Lock / Unlock	Ctrl + L
Record	Ctrl + R
Help	F1
Hide dashboard	F2
Hide panels and borders; video panel snaps to edge	F3

Command	Key(s)
Always On Top	F4
ThruView™ Window (Blended Window, regardless of setting in Display Settings page)	F5
ThruView™ Desktop (Blended Desktop, regardless of setting in Display Settings page)	F6
Video Desktop, regardless of setting in Display Settings page	F7
Minimize without Video Desktop or ThruView™	F8
Reverse play (Jog Shuttle) increments to next lower speed: -2x, -4x, -8x, -16x	F9
Normal play (Jog Shuttle)	F10
Forward play (Jog Shuttle) increments to next higher speed: 2x, 4x, 8x, 16x	F11
Cycle time display format (while recording or in TV-on-Demand™ mode)	Ctrl + T
Exit TV	Alt + F4
About	Alt + A

## MulTVView™ Keyboard Shortcuts

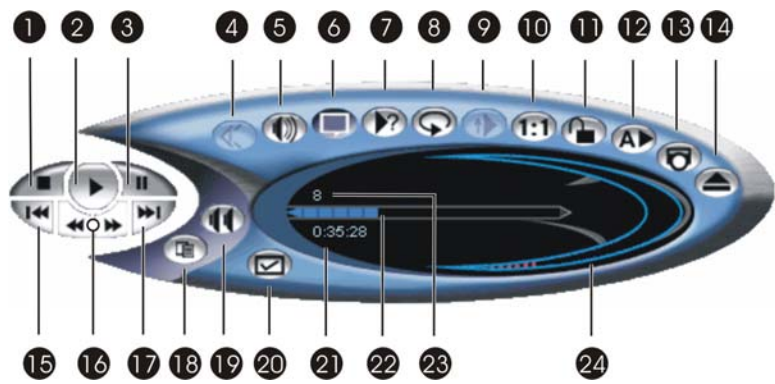
You can use the following keys to control MulTVView™ from your keyboard.

MulTVView™ Command	Key(s)
Toggle MulTVView™ window on / off	Alt + H
Toggle MulTVView™ focus	Alt + O
MulTVView™ window Top-Left of main window	Alt + Left arrow key
MulTVView™ window Bottom-Left of main window	Alt + Up arrow key
MulTVView™ window Bottom-Right of main window	Alt + down arrow key
MulTVView™ window Top-Right of main window	Alt + right arrow key
Cycle through MulTVView™ window positions	Alt + W

MultiView™ Command	Key(s)
Toggle MultiView™ full screen /windowed mode	Alt + F

# DVD

Use ATI Multimedia Center™ to play DVDs on your computer. The DVD is a high-density format that provides as much as 17 Gigabytes of storage, allowing for the playback of full-length movies. The DVD application can play all standard video discs, including copy-protected and interactive titles.



## DVD Dashboard

1	Stop
2	Play
3	Pause
4	Angle
5	Mute
6	Closed Captions
7	Jump To
8	Restart Program
9	Menu Up
10	Zoom / Unzoom
11	Parental Control
12	A/B Repeat
13	Still Capture

DVD Dashboard	
14	Eject
15	Previous Chapter
16	Rewind / Fast Forward
17	Next Chapter
18	Menus
19	Audio
20	Setup
21	Time
22	Position
23	Chapter
24	Volume

### ***Start DVD from LaunchPad***

- On the ATI Multimedia Center™ LaunchPad, click the **DVD** button. The DVD video window and dashboard open.

### ***Start DVD from the Windows® task bar***

- 1 On your Windows® task bar, click **Start** and then point to **All Programs**.
- 2 In the All Programs menu, point at **ATI Multimedia Center™**, and then select **DVD**.

### ***Open DVD from another ATI Multimedia Center™ application***

- 1 On either the feature's dashboard or display panel, click the ATI logo. An application list opens.
- 2 From the application list, choose **DVD**.

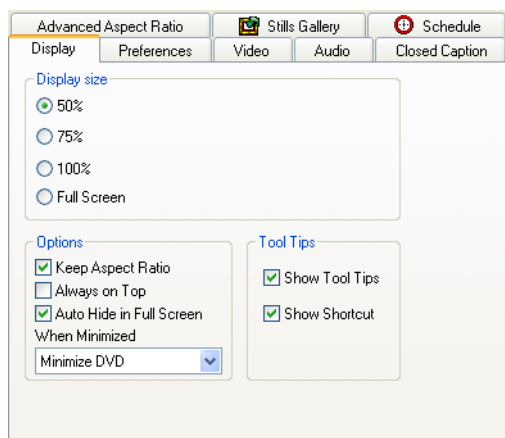
## **DVD Setup**

The DVD Player Setup dialog lets you set up your display window, choose from several Preference options, adjust your DVD video display, change

Audio settings, set up Closed Captions, control Advanced Aspect Ratio settings, Add files to the Stills Gallery, and add a DVD event to the ATI Multimedia Center™ Schedule.

## Display Tab

Use the Display tab to change the display window size, choose from several display options, and select options for the DVD dashboard Tool Tips.



---

### DVD Player: Display Tab

---

#### *Open the DVD display setup page*

- 1 On the DVD control panel, click the **Setup** button. The DVD Setup dialog opens.
- 2 Click the **Display** tab.

#### *Change the DVD display size*

- On the DVD Setup Display page, in the Video Size area, choose one of the following sizes:
  - **50%**
  - **75%**
  - **100%**
  - **200%**

- **Full Screen**



If the current panel does not support resizing, the values are unavailable.

### ***Choose DVD display options***

On the DVD Setup Display page, choose from the following options:

- **Keep Aspect Ratio:** Preserves the aspect ratio when you resize or zoom the display. The Aspect Ratio is the relationship of width (x-axis) to height (y-axis).
- **Always on top:** Always displays DVD on top of other windows.
- **Auto Hide in Full Screen:** Automatically hides DVD controls when playing in full-screen.
- **When Minimized:** Choose one of the following from the drop-down list:
  - **Minimize DVD:** Minimizes the DVD display window.
  - **ThruView™Top:** Makes the DVD Desktop (Dashboard) semi-transparent.
  - **ThruView™ Window:** Makes the video display Window semi-transparent.

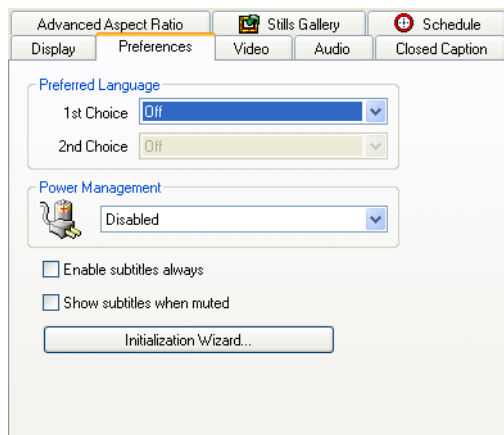
### ***Change DVD dashboard tooltip information***

- On the DVD Setup Display page, in the Tool Tips area, choose from the following options:
  - **Show Tool Tips:** Show tool tips when you point at controls with your mouse.
  - **Show Shortcuts:** Show keyboard shortcuts when you point at controls with your mouse.

## **Preferences Tab**

Use the Preferences tab to choose preferred languages, control the power management settings, choose subtitle options, and access the Initialization Wizard.





---

### DVD Player Setup: Preferences Tab

---

#### ***Set preferred languages***

- 1 In the DVD Setup dialog, click the **Preferences** tab.
- 2 In the Preferred Languages section, open the **1st Choice** drop-down list and select a language.
- 3 Open the **2nd Choice** drop-down list and select a language.
- 4 On the DVD Setup dialog, click **OK**. When you use DVD, it automatically selects the audio stream and subtitles to match your first choice. If your first choice is not available, your second choice is used. If neither first nor second choices are available, DVD uses the first available audio and subtitle stream by default.

#### ***Change power management settings***

- 1 In the DVD Setup dialog, click the **Preferences** tab.
- 2 In the Power Management section, select one of the following levels:
  - **Disabled:** Power management is never enabled.
  - **Always:** Power management always enabled.
  - **Disabled while playing:** Power management is disabled while a DVD is playing.

### **Select subtitle options**

- 1 In the DVD Setup dialog, click the **Preferences** tab.
- 2 On the preferences page, below the Power Management section, choose from the following options:
  - **Enable subtitles always:** Always displays subtitles while playing.
  - **Show subtitles when muted:** Displays subtitles whenever the audio is muted.

### **Use the DVD Initialization Wizard**

Use the Initialization Wizard to enable Bookmarks, select DVD drive preferences, and enable Parental Controls.

- **Bookmarks:** On the Bookmarks page, you can specify bookmark preferences. When you create a bookmark, your DVD begins playing at the bookmark. The Setup Wizard lets you specify when a bookmark should be deleted and deletes expired bookmarks automatically.
- **DVD Drive Selection:** On the DVD Drive Selection page, you can choose from several DVD play preferences.
- **Parental Control Initialization Wizard:** On the Parental Control Initialization Wizard page, you can create a password that is required whenever anyone attempts to play a particular DVD.

### **Run the Initialization Wizard**

- 1 In the DVD Setup dialog, click the **Preferences** tab.
- 2 On the Preferences page, below the Power Management section, click the **Initialization Wizard** button. The Initialization Wizard takes you step by step through the bookmark, drive selection, and parental control procedures.
- 3 Click **Next** to advance to the next screen.
- 4 Click **Back** to return to a previous screen.
- 5 When you have completed the Initializing Wizard, click **Finish**.

### **Video Tab**

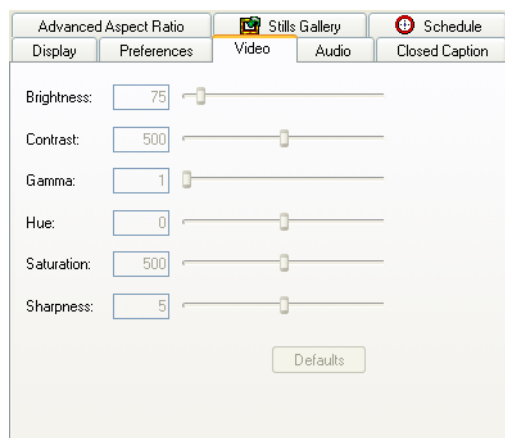
Use the Video tab to control your DVD video settings.

The following video controls are available:

- **Brightness:** Adjusts the intensity of light in your display.
- **Contrast:** Adjusts the gradation of tones between light and dark areas of your display.
- **Gamma:** Adjusts the color temperature of your display. The higher the gamma, the higher the brightness and contrast of your display, with maximum being a flat (unmodified) setting.
- **Hue:** Adjusts the color of your display.
- **Saturation:** Adjusts the richness of color in your display. Saturation is determined by the amount of grey in a particular color.
- **Sharpness:** Sharpens or softens edges in the video by reducing or increasing the blend factor of adjacent pixels.



Depending on your hardware, some slider options may not be available.



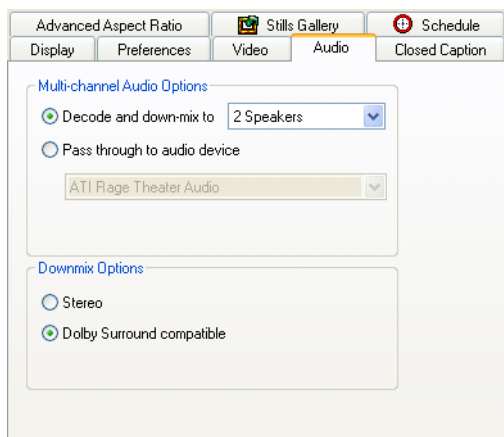
---

### DVD Player Setup: Video Tab

---

## Audio Tab

It is possible to have two, four, six, or eight sound channels depending on the number of speakers connected to your sound card. If you don't have a sound card or an ATI graphics card, the Pass through to audio device list will be unavailable. The Audio tab provides multi-channel audio and downmix options.



---

### DVD Player Setup: Audio Tab

---

#### Select multi-channel Audio Options

- 1 In the DVD Setup dialog, click the **Audio** tab.
- 2 In the multi-channel Audio Options section, choose from the following options:
  - **Decode and down-mix to:** Lists how many audio channels to down-mix. It is possible to have two, four, six, or eight channels depending on the number of speakers connected to your sound card. Most standard computer systems are capable of driving two speakers at once (stereo sound).
  - **Pass through to audio device:** Lists all the output devices that support S/PDIF output. However, if you do not have a sound card or an ATI graphics card, the Pass through to audio device list will be unavailable.

#### Choose a downmix option

- 1 In the DVD Setup dialog, click the **Audio** tab.
- 2 In the Multi-channel Audio Options section, choose the **Decode and download down-mix to** option.
- 3 In the Downmix Options section, choose one of the following options:

- **Stereo:** Play audio in 2-channel stereo.
- **Dolby Surround compatible:** Play audio using Dolby ProLogic.

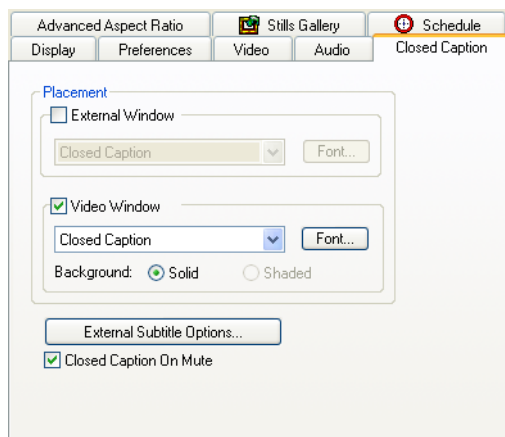
## Closed Caption Tab

The Closed Caption settings tab lets you change settings that can make closed caption text more prominent and easier to read. Options include setting the preferred language, font, and font color.

An additional External Subtitles feature lets you view program, karaoke, menus, and simple animation subtitles in languages not supplied on the DVD. The ATI Multimedia Center™ DVD player supports MicroDVD and SubViewer 2.0, which are two of the most common subtitle formats. Third-party conversion tools are available on the Internet that allow you to convert other subtitle file formats into MicroDVD and SubViewer 2.0 format.



MicroDVD requires a value for frames per second. If the DVD movie does not indicate the frame rate, try these standard values: 23.976, 24.25, 29.97, 30.



### ***Set closed captions in an external window***

- 1** In the DVD Setup dialog, click the **Closed Caption** tab.
- 2** In the Placement section check the **External Window** option. The External Window drop-down list is available.
- 3** From the External Window drop-down list, choose one of the following options:
  - **Closed Caption:** Displays closed captioned text in an external window.
  - **External Subtitle File:** Shows external subtitles in languages not available on the DVD. The DVD player supports MicroDVD and SubViewer 2.0 subtitle formats.

### ***Set closed captions in the video window***

- 1** In the DVD Setup dialog, click the **Closed Caption** tab.
- 2** In the Placement section, check the **Video Window** option.
- 3** From the Video Window drop-down list, choose one of the following options:
  - **Closed Caption:** Displays closed captioned text in the DVD display window.
  - **External Subtitle File:** Shows external subtitles in languages not available on the DVD. The DVD player supports MicroDVD and SubViewer 2.0 subtitle formats.

### ***Change external subtitles options***

You can display external subtitles over video or in a separate window. When you display external subtitles in a separate window, you can double-click the external subtitle text to jump to that point in the movie.

- 1** In the DVD Setup dialog, click the **Closed Caption** tab.
- 2** Below the Placement section click the **External Subtitle Options** command button. The External Subtitle Options dialog opens.
- 3** Click **Add DVD**.
- 4** In the Select the subtitle file dialog box, locate and select the subtitle file you want to use.
- 5** Click **Open**. The Select the subtitle file dialog box closes and the selected subtitle files is listed in the External Subtitles Options dialog box.

- 6 Click **OK**. The External Subtitles Options dialog box closes.
- 7 On the DVD Setup dialog, click **OK**.

### ***Show closed captions on mute***

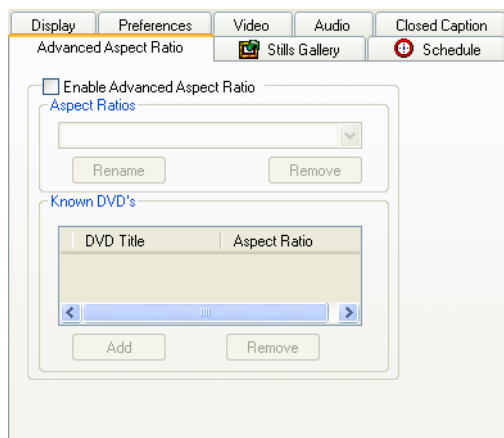
- 1 On the DVD Setup panel, click the **Closed Caption** tab.
- 2 Check the **Closed Captions On Mute** option.
- 3 Click **OK**.

## **Advanced Aspect Ratio Tab**

Use Advanced Aspect Ratio tab to customize your display's aspect ratio, so that you can watch a movie in full-screen, letterbox, or standard TV (4:3 ratio) modes. The aspect ratio is the relationship of picture width (x-axis) to height (y-axis). This feature is especially useful if your display is wide-screen or projection TV.

In addition, you can also use this tab to add a DVD title to the Known DVD list, ensuring that any settings you configure will be retained upon future viewings.

**i** Some discs may not support the aspect ratio you select. For example, selecting letterbox for a DVD formatted to display at a 4:3 ratio will not provide letterbox playback.



### Select an aspect ratio

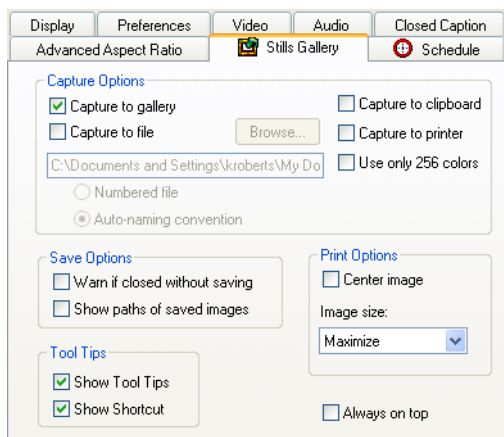
- 1 In the DVD Setup dialog, click the **Advanced Aspect Ratio** tab.
- 2 Check the **Enable Advanced Aspect Ratio** option.
- 3 From the **Aspect Ratios** drop down list, choose an aspect ratio.

### Remove a DVD from the Known DVD list

- 1 In the DVD Setup dialog, click the **Advanced Aspect Ratio** tab.
- 2 Check the **Enable Advanced Aspect Ratio** option.
- 3 In the Known DVD section, select the DVD you want to remove.
- 4 Click **Remove**. The DVD title and aspect ratio are removed from the list.
- 5 Click **OK**.

## Stills Gallery Tab

Use the Still Gallery tab to change the way you can save and print images you capture from a DVD. You can choose capture, save, and print options and change the information shown in the Stills Gallery tool tips.





### **Select capture options**

- 1** On the dashboard, click **Setup**.
- 2** Click the **Stills Gallery** tab.
- 3** In the Capture Options section, choose from the following options:
  - **Capture to gallery:** Captures still images to the stills gallery.
  - **Capture to file:** Captures still images to a file folder of your choosing.
  - **Numbered file:** Stores captured images in numbered files (pic001.bmp, pic002.bmp, and so on) on your hard drive.
  - **Auto-naming convention:** Stores captured images as auto-named files on your hard disk.
  - **Capture to clipboard:** Places captured images on the Windows Clipboard.
  - **Capture to printer:** Send the captured image to a printer.
  - **Use only 256 colors:** Saves captured images as 256-color files in order to save space.

### **Set up save options**

- 1** On the dashboard, click **Setup**.
- 2** Click the **Stills Gallery** tab.
- 3** In the Capture Options section, choose from the following options:
  - **Warn if closed without saving:** Alerts you if you close the stills gallery without saving captured images.
  - **Show paths of saved images:** Display the drive, folders, and subfolders that contain your saved images.
- 4** When you have selected the options you want, click **OK**.

### **Select print options**

- 1** On the dashboard, click **Setup**.
- 2** Click the **Stills Gallery** tab.
- 3** In the Print Options section, choose from the following print options:

**Center image:** Centers stills gallery images.

**Image size:** Chooses an image print size from the following:

- **Maximize:** Prints in full-page format.
- **One to One:** Prints in the same size as original image.
- **Double:** Prints at twice the original size.

### Set up tool tip options

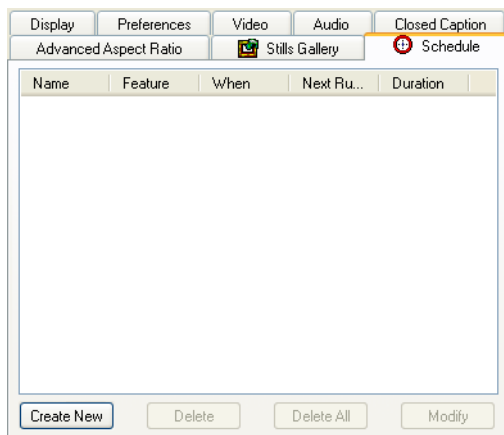
- 1 On the dashboard, click the **Setup** button.
- 2 Click the **Stills Gallery** tab.
- 3 In the Tool Tips section, check or clear the following options:
  - **Show Tool Tips:** Displays tool tips while in the stills gallery.
  - **Show Shortcut:** Displays shortcut keys while in the stills gallery.
- 4 When you have selected the tool tip options you want, click **OK**.

## Schedule Tab

The Schedule tab lets you create a schedule of events using the Schedule Wizard. You use the Schedule page to activate events on the dates and times you specify. You can schedule events for Television, CD Audio, File Player, TV Magazine, Video Capture, and Video CD.



DVD playback events are not available for scheduling.



### DVD Player Setup: Schedule Tab

### Set a schedule for another ATI Multimedia Center™ program

- 1 In the DVD dashboard, click the **Setup** button, or press **Ctrl + S**.

- 2 Select the **Schedule** tab.
- 3 Click the **Create New** command button. The Schedule Wizard guides you step-by-step through the new schedule creation procedure for the ATI Multimedia Center™ of choice.

## Playing DVD

ATI Multimedia Center™'s DVD feature works the same way as standard DVD players, so you can play DVDs, stop or pause playback, skip forward or back by individual chapters, and rewind or fast forward to particular scenes.

### *Play back a DVD*

- In the DVD dashboard, click the **Play** button.

### *Pause a DVD*

- In the DVD dashboard, click the **Pause** button.

### *Stop a DVD*

- In the DVD dashboard, click the **Stop** button.

### *Skip forward or backward by chapter*

- To skip forward by chapter, click the **Next Chapter** button in the DVD dashboard, or press **Page Down**.
- To skip backwards by chapter, click the **Previous Chapter** button in the DVD dashboard, or press **Page Up**.

### *Rewind or fast forward in current chapter*

- To rewind in the current chapter, click the **Rewind** button in the DVD dashboard, or press **Home**.
- To fast forward in the current chapter, click the **Fast Forward** button in the DVD dashboard, or press **End**.

### *Change the rewind or fast forward time intervals*

- To change the time duration for rewind or fast forward, right-click on either **Rewind/Fast Forward** button and select the time interval.

Six options are available: ¼X, ½X, 1X, 2X, 4X, and 8X.

## Accessing DVD Menus

Standard DVDs typically provide several menu items, allowing you to jump to specific portions of the disc or access other features. Typical menu features include:

- Title (usually, a whole movie or album)
- Root
- Audio
- Sub-picture (sub-pictures overlay the video and are used for subtitles, karaoke, menus, simple animation, and so on.)
- Angle
- Chapter

Menu items are dependant on the features available on a DVD disc.

### Select DVD Menus

- Click the **Menus** button in the DVD dashboard, or click **Ctrl + M**. Select the menu item.

## Selecting Audio Channels

Standard DVDs often contain multiple audio streams, providing either the original dialog or dialog dubbed into other languages. You can change the active audio stream you are listening to in the DVD player.



DVDs can support up to eight audio channels, but not all discs provide them.

### Change the active audio channel

- 1 Click the **Audio** button in the DVD dashboard, or press **Ctrl + D**. A menu of available audio streams is displayed. The currently playing channel is checkmarked.
- 2 Select a different audio channel.

## Accessing Multiple Viewing Angles

Some DVDs provide more multiple viewing angles for given scenes or chapters. Up to nine different angles can be included for a given DVD segment.

When available, this feature provides different viewing angles of the same scene or performance for such things as recorded sporting events, stage or music performances, and more.

### **Select a viewing angle**

- 1 Click the **Angle** button in the DVD dashboard, or press **Ctrl + V**. A menu of available camera angles appears. The selected angle is checkmarked.
- 2 Select a different viewing angle.

## **Mute Functionality**

The mute button quickly turns off the sound of the DVD. The action continues to play, and subtitles (if selected) are still displayed, but the sound is switched off.

### **Activate mute**

- Click the **Mute** button, Or press \*.

## **Using Subtitles, Closed Captions, and External Captions**

Subtitles allow viewers to read text that accompanies the dialog, often available in different languages. Closed captioned text is typically available in a single language for the hearing impaired. These two similar functions can be accessed through the **Closed Caption** button on the DVD dashboard.

You can choose the language of the text to be displayed and whether or not the text will appear in the same window as the video or in a separate, scrollable window.



Most movies include subtitles rather than closed captions. Closed captioning must have been available as a feature on the DVD disc in order for it to be available.

External subtitles can also be added, allowing you to view subtitles in languages not provided on the DVD disc. The DVD player supports two of

the most common subtitle formats: MicroDVD Player and SubViewer 2.0. These subtitles can be played in the video window or in a separate window.



A Closed Caption tab is available via the Setup button, which provides detailed options for specifying how closed captioned text is displayed, allowing control over such things as the background color, the font, and the font color for the window.

### ***Change the subtitle language selection***

- 1 In the DVD dashboard, click the **Closed Caption** button, or press **Ctrl + C**. A menu of subtitle language choices for that DVD appears. The selected language is checkmarked.
- 2 Select the new subtitle language.

### ***Display a second subtitled language in another window***

- 1 In the DVD dashboard, click the **Closed Caption** button, or press **Ctrl + C**. A menu of subtitle language choices for that DVD appears. The selected subtitled language is checkmarked.
- 2 Click **Second Subtitle**. Select the subtitled language to appear.

### ***Set an external subtitle***

- 1 In the DVD dashboard, click the **Closed Caption** button, or press **Ctrl + C**.
- 2 Click **Set External Subtitles**. The first time this feature is run, an install process loads the necessary drivers.
- 3 Select the external subtitle you have previously downloaded for your DVD.

## **The “Jump To” Function**

The Jump To feature allows you to go directly to selected portions of the DVD you are currently playing. DVD content typically consists of “titles” (full movies) and “parts of titles” (chapters, previews, and extra features).

The Jump To feature allows you to go to a specific title, chapter, or a particular time in your DVD and begin viewing from that point.



You can also use the DVD Feature Menu to search for titles and chapters.

### ***Jump to a title or chapter***

- 1 In the DVD dashboard, click the **Jump To** button, or press **Ctrl+P**.
- 2 Select **Position**. Either type the number of the Title or Chapter to jump to, or select a value from the jump to box.

### ***Jump to a particular time***

- 1 In the DVD dashboard, click the **Jump To** button, or press **Ctrl+P**.
- 2 Select **Time**. Either type the time or select a value from the spin-box.

## **Using the Restart Function**

The Restart function allows you go back to the beginning of the last chapter that has been viewed. If you step away from the screen and want to watch what you missed, this feature is a convenient way to jump back to the last major section of the DVD that was played.

### ***Restart the beginning of the current chapter***

- In the DVD dashboard, click the **Restart** button, or press **Ctrl+R**.

## **Menu Up**

The Menu Up function allows you to go back to the previous DVD menu item.



Not all DVDs support this this function.

### ***Menu Up to previous menu item***

- In the DVD dashboard, click the **Menu Up** button, or press **Ctrl+U**.

## **Zooming and Panning**

You can zoom in on the video in the Display panel to enlarge a selected portion of the screen, and return your display to normal.

### ***Zoom to a fixed display value***

- 1 In the DVD dashboard, right-click the **Zoom/Unzoom** button.
- 2 From the menu, select a zoom level. Available options are **Zoom 2x**, **Zoom 4x**, and **Zoom 8x**.

### ***Zoom in on a portion of the screen***

- 1 In the DVD window, click on a region to zoom in on. When the mouse button is released, the rectangular area selected is zoomed to the full size of the DVD window.
- 2 To return the screen back to normal, click the Zoom/Unzoom button, or click **Alt+Z**.

## **Parental Control**

Parental Control lets you restrict access to selected material by requiring password access, and can be used to prevent children from viewing an inappropriate DVD. When a parental level is set, the DVD player will not play any DVD lower than that rating. The following table depicts the playable levels against the Motion Picture Association of America (MPAA) movie rating system:

Rating	Parental Level
<b>G (General Audiences)</b>	<b>Kid's titles/Play all titles</b>
<b>PG (Parental Guidance Suggested)</b>	<b>Adult titles/Play all titles</b>
<b>PG-13 (Parents Strongly Cautioned)</b>	<b>Adult titles/Play all titles</b>
<b>R (Restricted)</b>	<b>Adult titles/Play all titles</b>
<b>NC-17 (No One 17 and Under Admitted)</b>	<b>Adult titles/Play all titles</b>

When a DVD with a higher rating than the parental allows is launched, you will be prompted with a password field which must be entered correctly in order to view the movie.



Not all DVD makers necessarily adhere to this standard.

### ***Select a parental control level***

- 1 In the DVD dashboard, right-click the **Parental Lockout** button, or press **Ctrl+L**.
- 2 Select a parental control level from the menu list.

The first time you use this feature, or whenever you attempt to change password levels, you will be prompted to enter a 4-digit password.



You will need to remember this password to play movies higher than the otherwise allowable parental control level.

## A/B Repeat

You can play a section of a DVD disc by setting a start point (A) and an end point (B) in the disc, and play that section continuously. This allows the user to create continuous loops of video to play back.

### *Use A/B Repeat*

- 1 On the DVD dashboard, click the **A/B Repeat** button once to set the start point, or press **Ctrl+A**. Playback continues.
- 2 To set the end point, click the **A/B Repeat** button again, press **Ctrl+A**. Looped playback begins from the start point to the end point.

Pressing the A/B Repeat button again cancels looped playback, and playback continues from the current point.

After you set the start point, navigating or opening a menu cancels creation of the loop; if the loop is already playing, it will stop.

## Capturing Still Frames

Using the capture feature, you can capture still frames from a video stream and store them for later viewing.

 If the program is restricted by Parental Control, Still Capture is disabled.

### *Capture still frames from a DVD*

- Click the **Still Capture** button in the DVD dashboard, or press **Ctrl+Ins**. The current frame is added to the Still Gallery.

## Ejecting the DVD

You can eject the current DVD playing directly from the dashboard.

### *Eject a DVD*

- Click the **Eject** button in the DVD dashboard, or press **Ctrl+E**.

## Sizing the Video Display Panel

You can change the size of the video display panel at any time. Several preset levels are available, or you can drag a corner of the existing video panel and reset the size of the video window.

When the video display panel is resized, the aspect ratio of the DVD being played is retained.

### *Resize the Video Display Panel*

You can resize the video display panel by using your mouse to drag an edge, and you can use the ALT or CTRL key to display these preset screen sizes.

Sizing	Control
50% of original size	Alt / Ctrl +1
75% of original size	Alt / Ctrl +2
100% of original size	Alt / Ctrl +3
Toggle full-screen	Alt / Ctrl +4 - Full screen Ctrl + F - Toggle full screen Esc - Exit full screen

## Using THRUVIEW™

ATI Multimedia Center™'s THRUVIEW™ feature allows you to watch TV, DVD or other video in a transparent mode, so you can watch your program while still interacting with other programs on your computer's desktop.

This feature can only be set while the video program you are watching is being played.

### *Set ThruView™ to windowed mode*

- In the video display, right-click and select **ThruView™ Window**, or press **F5**.

To get out of ThruView™ mode, click the program icon in the Windows® Taskbar.

### *Set ThruView™ in full-screen mode*

- In the video display, right-click and select **ThruView™ Desktop**, or press **F6**.

To get out of ThruView™ mode, click the program icon in the Windows® Taskbar.

## Chapter Preview

When the Bookmarks feature is enabled and you eject a DVD disc before the movie is over, and then restart playback, Chapter Preview displays an on-screen message asking if you want to preview the previous chapters.

**If you click the Play button**, the Player plays the first ten seconds of each chapter, up to the point where you stopped.

**If you do nothing**, playback resumes from the point where you stopped.

**If you click Stop, Previous/Next Chapter, A/B Repeat, or move the position slider**, playback starts from the point where you stopped.

**If you click the Pause button**, Chapter Preview pauses. When you click Play, Chapter Preview plays another ten seconds of the current chapter.

If you exit the Player or restart playback by changing settings in the Audio Setup page, Chapter Preview will ask if you want to preview again.

If you jump to a DVD menu or change the Parental Control Setting, Chapter Preview stops.

## DVD Initialization Wizard

The DVD initialization wizard provides options for controlling DVD bookmarks.

### *Access the DVD Initialization Wizard*

Click the **Initialization Wizard** button. The second page of the Wizard provides options for controlling DVD bookmarks.

Selection	Function
<b>Enable Bookmarks</b>	Bookmarks allow you to resume playback from where you left off when last viewing the DVD. <b>Maximum number of bookmarks to keep</b> Enter the number of bookmarks that DVD should record. <b>Bookmarks expire after this many days</b> Enter the number of days to keep bookmarks.

## Bookmarks and Chapter Preview

When you first install the DVD program, you are prompted as to whether you want the program to create bookmarks that will enable you to mark a

section of a DVD for future playback. If a bookmark is present, when you reload that DVD it will start playing from that point.

The program sorts bookmarks by creation date, and deletes bookmarks older than the expiry date you specify, ensuring that the maximum number of bookmarks is not exceeded.



The Power Management bookmark, which regulates the amount of power being consumed when the DVD playback feature is being used, cannot be deleted.

When the Bookmarks feature is enabled and you eject a DVD disc before the movie is over, and then restart playback, Chapter Preview displays an on-screen message asking if you want to preview the previous chapters.

- **If you click the Play button**, the Player plays the first ten seconds of each chapter, up to the point where you stopped.
- **If you do nothing**, playback resumes from the point where you stopped.
- **If you click Stop, Previous/Next Chapter, A/B Repeat, or move the position slider**, playback starts from the point where you stopped.
- **If you click the Pause button**, Chapter Preview pauses. When you click Play, Chapter Preview plays another ten seconds of the current chapter.

If you exit the Player or restart playback by changing settings in the Audio Setup page, Chapter Preview will ask if you want to preview again.

If you jump to a DVD menu or change the Parental Control Setting, Chapter Preview stops.

## DVD Feature Menu

You can access DVD functions by right-clicking on the video viewing area or the control panel. This is very useful when you play files in full-screen mode.

Selection	Function
Setup	Opens the Preferences page.
Hide controls	Hides the full-screen controls.
Always On Top	Displays DVD on top of other applications.

Selection	Function
<b>THRUVIEW Window</b>	The video window appears as a translucent layer on top of any other windows, allowing you to work and watch DVD movies at the same time.
<b>THRUVIEW Desktop</b>	Blends the display with your desktop.
<b>Eject</b>	Opens/closes the DVD drive tray.
<b>Resume</b>	Continues play, after pausing.
<b>Play/Pause</b>	Toggles between play and pause.
<b>Stop</b>	Stops play.
<b>Jump To</b>	Search for a specific location on the disc.
<b>Restart program</b>	Starts play at the beginning of the file.
<b>Menu up</b>	Display next menu.
<b>Menu</b>	Displays a "menu of menus".
<b>Closed Captions</b>	Display closed captions, select language.
<b>Audio</b>	Displays a menu of audio streams.
<b>Angle</b>	Displays a menu of camera angles.
<b>Parental Control</b>	Displays a menu of parental level settings.
<b>Search</b>	Search for any title or chapter.
<b>Zoom</b>	Zoom 2x, 4x, 8x, Unzoom.
<b>Advanced Aspect Ratio</b>	Control the width-to-height ratio of video displayed in DVD.
<b>About</b>	Displays the About dialog.
<b>Exit</b>	Closes DVD.

## Full-Screen Controls

When you play DVD discs in full-screen mode, the Player controls appear at the bottom of your screen. You can use the following keys to return to windowed video, and hide or show the on-screen controls.

Action	Control
<b>Toggle full-screen mode</b>	Alt / Ctrl + F

Action	Control
Exit full-screen mode	Esc
Hide / Show on-screen controls	F2

## Region Codes

Six region codes, or “country codes” are used to prevent playback of certain discs in certain geographical regions. DVD players will not play discs that are not allowed in the region.

If you insert a DVD disc whose region code is different from the currently set value, a dialog appears where you can change the region code for your location.



You can only change Region Codes five times; on the fifth change, the selected region will “stick”

The following is a listing of region codes and the geographical areas they relate to:

Region Code	Corresponding Geographical Region
Region 1	The U.S., U.S. territories, and Canada.
Region 2	Europe, Japan, the Middle East, Egypt, South Africa, and Greenland.
Region 3	Taiwan, Korea, the Philippines, Indonesia, and Hong Kong.
Region 4	Mexico, South America, Central America, Australia, New Zealand, Pacific Islands, and the Caribbean.
Region 5	Russia, Eastern Europe, India, most of Africa, North Korea, and Mongolia.
Region 6	China

## S/PDIF

S/PDIF (Sony/Philips Digital Interface) allows transfer of digital audio from one location to another without analog conversion; it is the standard format for exchanging digital audio signals between consumer audio components. Connections can be coaxial or optical.

You can connect your video card's audio output directly to an S/PDIF amplifier or speaker set; for details, see the installation guide that came with your video card.

- S/PDIF is not compatible with analog audio. You must have a Dolby Digital 5.1 channel A/V receiver; enabling S/PDIF with an analog receiver will not provide audio.
- If you are using regular speakers on your PC, but do not hear audio while playing a DVD, ensure that the **Enable S/PDIF output** box is not checked.
- High-quality audio cables can be used for short lengths; good 75-ohm cable and good 75-ohm connectors can provide lengths up to 25 feet.

## DVD Keyboard Shortcuts

You can use the following keys to control DVD from your keyboard.

Command	Key(s)
Help	F1
Show/hide control	F2
Play / Pause	Spacebar
Pause	Ctrl + B
Play	Ctrl + X
Stop playback	Ctrl + Z
Skip forwards / backwards	End / Home
Volume up / down	(numeric keypad) - / + (alphanumeric keypad) _ / = and - / +
Skip to previous chapter	Home
Scan backwards	Page Up
Scan forwards	Page Down
Skip to next chapter	End
Select menu option	Return
Resume playback	Backspace

Command	Key(s)
<b>0 - 9</b>	Enter number 0 - 9
<b>Move selection up / down</b>	Up Arrow / Down Arrow
<b>Move section left / right</b>	Left Arrow / Right Arrow
<b>Display at 50%</b>	Alt / Ctrl + 1
<b>Display at 75%</b>	Alt / Ctrl + 2
<b>Display at 75%</b>	Alt / Ctrl + 3
<b>Display at 75%</b>	Alt / Ctrl + 4
<b>About</b>	Alt + A
<b>Setup</b>	Alt + S
<b>Exit</b>	Alt / Ctrl + F4
<b>Toggle Always on Top</b>	Alt / Ctrl + T
<b>Eject disk</b>	Alt / Ctrl + E
<b>Minimize</b>	Alt / Ctrl + M
<b>Increase display size</b>	Alt / Ctrl + Up Arrow
<b>Decrease display size</b>	Alt/ Ctrl + Down Arrow
<b>Stereo</b>	Ctrl + A
<b>Go to root menu</b>	Ctrl + M
<b>Open a dialog where you can play a specific title, chapter, or time</b>	Ctrl + P
<b>Restart from beginning of chapter</b>	Ctrl + R
<b>Closed caption</b>	Ctrl + S
<b>In a menu, select Go Up program, if available</b>	Ctrl + U
<b>Select viewing angle</b>	Ctrl + V



# EazyConnect™

With EazyConnect™ you can use your home computer network to share audio and video content among all your networked PCs. One networked PC with an All-in-Wonder® video card can provide TV feeds to the other PCs on the network, even if they do not have TV tuners. All network users can schedule recording sessions and request recorded programs for playback on their PCs.

EazyConnect™ works on a client-server network consisting of a server PC with the full ATI Multimedia Center™ feature installed, which provides the TV signal through one or more hubs to the connected client PCs that have EazyConnect™ installed



For proper operation, EazyConnect™ must be installed on client and server PCs running either Windows® XP or Windows® 2000.

## Setting up an EazyConnect™ Server

Setting up EazyConnect™ is a two-part process.

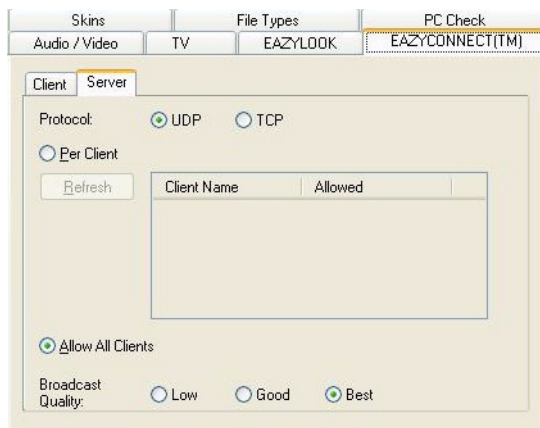
- 1 Configure a computer as an EazyConnect™ server.
- 2 Set up one or more EazyConnect™ client computers.

If additional servers are added use the EazyConnect™ Configuration Utility to determine which clients can connect to which servers. You must run the EazyConnect™ Configuration Utility before setting up the server.

When a client PC is first installed, it will connect to the first available server by default. The Client tab appears in the ATI Multimedia Center™ configuration panel under the EazyConnect™ tab, but only if both EazyConnect™ and the client software are installed.



EazyConnect™ must be installed on each client PC.




---

**ATI Multimedia Center™ Configuration dialog: EazyConnect™ Server Tab**

---

### ***Configure an EazyConnect™ server***

- 1 On the ATI Multimedia Center™ Launchpad, click the **ATI Multimedia Center™ Configuration** button. The ATI Multimedia Center™ Configuration dialog opens.
- 2 Click the **EazyConnect™** tab. If you have a TV Wonder™ or All-in-Wonder® card on your system, the EazyConnect™ tab displays the Server caption.
- 3 The ATI Multimedia Center™ Configuration utility scans the network for all client PCs and displays unconfigured PCs as “! computer name”.

### ***Allow client connection to EazyConnect™ server***

- 1 On the ATI Multimedia Center™ Launchpad, click the **Multimedia Center Configuration** button. The ATI Multimedia Center™ Configuration dialog opens.
- 2 Click the **EazyConnect™** tab.

- 3 In the Client list, select the **Clientname** box beside the client you want to allow. The client is now allowed on the EazyConnect™ network.

### ***Deny client connection to EazyConnect™ server***

- 1 On the ATI Multimedia Center™ Launchpad, click the **Multimedia Center Configuration** command button. The ATI Multimedia Center™ Configuration dialog opens.
- 2 Click the **EazyConnect™** tab.
- 3 In Client list, Clear the Clientname box beside the client you want to deny access. The client is now denied access to the EazyConnect™ network.

### ***Remove a client from the EazyConnect™ list***

- 1 On the ATI Multimedia Center™ Launchpad, click the **Multimedia Center Configuration** button. The ATI Multimedia Center™ Configuration dialog opens.
- 2 Click the **EazyConnect™** tab.
- 3 In the Client list, click and select the name of the client you want to remove.
- 4 On your keyboard, press **Delete**.

### ***Rename an EazyConnect™ client***

- 1 On the ATI Multimedia Center™ Launchpad, click the **Multimedia Center Configuration** button. The ATI Multimedia Center™ Configuration dialog opens.
- 2 Click the **EazyConnect™** tab.
- 3 In the Client list, click and select the name of the client you want to rename, and type a new name. The list name changes.

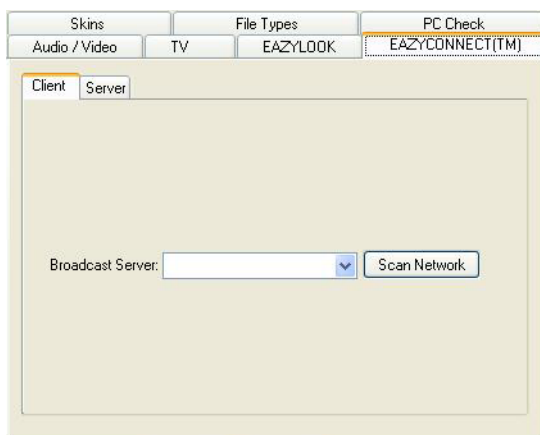
### ***Update the EazyConnect™ server***

- 1 On the ATI Multimedia Center™ Launchpad, click the **Multimedia Center Configuration** button. The ATI Multimedia Center™ Configuration dialog opens.
- 2 Click the **EazyConnect™** tab.
- 3 Click the **Refresh** button.

## Setting up an EazyConnect™ Client

The first time you start EazyConnect™ on a client computer, the EazyConnect™ Initialization Wizard is activated. The initialization wizard guides you through the client configuration.

When a client PC is first activated, it will connect to the first available server by default. The Client tab appears in the ATI Multimedia Center™ configuration panel under the EazyConnect™ tab, only if EazyConnect™ and the client software are installed.



**ATI Multimedia Center™ Configuration dialog: EazyConnect™ Client Tab**

### *Configure an EazyConnect™ client computer*

- 1 On the ATI Multimedia Center™ Launchpad, click the **Multimedia Center Configuration** button. The ATI Multimedia Center™ Configuration dialog opens.
- 2 Click the **EazyConnect™** tab. If you do not have a TV Wonder™ or All-in-Wonder® card on your system, the EazyConnect™ tab displays the Client caption.
- 3 Click the **Scan Network** button. The Configuration utility scans the network for a server PC and lists all of the EazyConnect™ servers on your network in the Broadcast Server list. If the client does not find any servers, an error message is displayed.
- 4 Open the **Broadcast Server** list and select a server.

- 5 On the Configuration dialog, click **OK**.




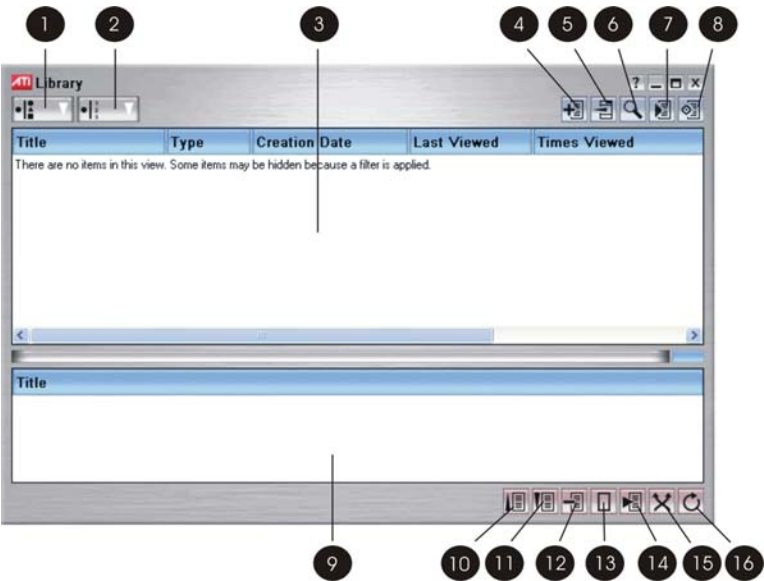
# Using the ATI Multimedia Center™ Library

The ATI Multimedia Center™ Library is a convenient way to manage, use, and copy your multimedia files.

Through the Library, you can scan your system directories for multimedia content, and the results are listed in the Library window. When you use ATI Multimedia Center™ to record video or audio, it is added to the Library automatically.

You can filter the file list by file type and date. You can also set up play lists, convert video files to ATI VCR or other format, and burn CD and DVD disks, provided you have a CD or DVD writer.

 Settings for the sleep timer (Duration and Fade Out) can be found in FM Radio setup.



ATI Multimedia Center™ Library	
1	Filter By Type
2	Filter By Date

---

**ATI Multimedia Center™ Library**


---

<b>3</b>	Library Content Window
<b>4</b>	Add Selected Entries to Playlist
<b>5</b>	Remove Entries from Library
<b>6</b>	Scan for Content
<b>7</b>	Hide Playlist
<b>8</b>	Create Media Layout
<b>9</b>	Playlist Window
<b>10</b>	Move Selected Title Up
<b>11</b>	Move Selected Title Down
<b>12</b>	Remove Selected Entry
<b>13</b>	Clear the Playlist
<b>14</b>	Start the Playlist
<b>15</b>	Shuffle the Playlist
<b>16</b>	Loop the Playlist

---

***Start the Library from LaunchPad***

- On the ATI Multimedia Center™ Launchpad, click the **Library** button.

***Start the Library from the Windows® task bar***

- 1** On the Windows® task bar, click **Start**.
- 2** In the Start menu, choose **All Programs**.
- 3** In the All Programs menu, choose the **ATI Multimedia Center™**.
- 4** Select **Media Library**. The Media Library dialog opens.



**Using ATI Multimedia Center™ Library**

When you open the ATI Multimedia Center™ Library for the first time, you must scan your system for content. When you scan your system for media files, the Library searches for the following file types by default:

Media file Category	Media file type
Movie	VCR, AVI, ASF, MPG, MP2, MOV, and WMV
Music	WAV, MP3, MID, and WMA
Pictures	BMP, TIF, GIF, JPG

The upper window of the Library dialog lists the multimedia content found by the Library system scan.

**Scan your system for media content**

- 1 In the upper-right of the Library window, click the **Scan for Content** button. The Scan for Content dialog opens.
- 2 In the upper pane of the Scan for Content dialog, click on the drive you want to scan.
- 3 In the lower window, Select the media types you want to include in the scan.
- 4 Click **Next**. The Scan for Content dialog advances to the next page.
- 5 In the upper-right of the Scan for content dialog, click the **Start Now** button. The directories you selected are scanned for the media types you specified.

**Specify scan file types**

- 1 In the lower-right of the Scan for Content dialog, click the **Extensions** button. The Extensions dialog opens.
- 2 In the Extensions list, select the extensions you want to include in your scan. To omit a file type from your scan, clear the box beside the extension in the list.

**Conduct a custom file type scan**

- 1 In the lower-right of the Scan for Content dialog, click the **Add Type** button. The Custom Type dialog opens.
- 2 Click inside the **Name** field. At the insertion point, type the name of your custom file type.

- 3 Click inside the **Extension** field. At the insertion point, type the filename extension for your custom file type.
- 4 Click the button to the right of the Application field.
- 5 In the Open dialog, browse for the application with which you want to open the custom file type.
- 6 Click **Open**. The Open dialog closes.
- 7 In the Custom Type dialog click **OK**. Your custom file type will now be included in library scans.

### ***Library Content Window***

The Library content window shows a list of the multimedia content found by the Library after you have scanned your system for content. The play list lets you filter your content list by file type and by date.

The following column headings are available for organizing media content in the Library:

- **Title:** Shows the title of the media file.
- **Type:** Shows the type of media file, for example Movie, Music, Picture.
- **Size:** Shows the size of the file in bytes.
- **Creation Date:** Shows the date when the file was created (as mm/dd/yy).
- **Last Viewed:** Shows the date when the file was last viewed (as mm/dd/yy).
- **Times Viewed:** Shows the number of times the file was viewed.
- **Source:** Shows the location of the source file.

### ***Customize the content list***

- 1 In the Library dialog, right-click the Library column heading.
- 2 In the shortcut menu, choose the content headings you want to use. A check mark indicates that heading is being used. The following headings are available:
  - **Title**
  - **Type**
  - **Size**
  - **Creation Date**
  - **Last Viewed**
  - **Times Viewed**

- **Source**

Note: You cannot remove the Title heading.

### ***Filter files by type***

- 1 In the upper-left of the Library dialog, click the **Filter by Type** button.
- 2 In the Filter by Type drop-down list, choose from the following filter options:
  - All
  - Movie
  - Music
  - Picture
  - Document
  - TV-ON-DEMAND™
  - EAZYSHARE™

### ***Filter files by date***

- 1 In the upper-left of the Library dialog, click the **Filter by Date** button.
- 2 In the Filter by Date drop-down list, choose from the following filter options:
  - All
  - Today
  - Yesterday
  - This Week
  - Last Week
  - Unviewed
  - Protected

### ***Clean up (delete) Library content***

You can search for and delete Library files based on age, viewing frequency, size, type, and protection status.

- 1 In the Library content window, right-click a file.
- 2 In the shortcut menu, click the **Cleanup Library** command. The Cleanup Wizard opens.
- 3 On the Cleanup Wizard click the **Next** button.

- 4 Follow the instructions in the Cleanup Wizard, and then click **Finish**. The Library searches for content and opens the Recommended Content for Deletion dialog.
- 5 You can delete all files or select specific files to delete.



When you delete a file, all related ATI VCR files and external closed-caption files are deleted.

### ***Convert ATI format files***

- 1 Scan your system for content or drag a VCR file from the play list into the Library content window.
- 2 In the Library content window, right-click the VCR file.
- 3 From the shortcut menu, click Export to MPEG-2 or Export to MPEG-4.
- 4 Save the file in the location of your choice (the default is My Documents in your Windows desktop).



You can also convert TV-ON-DEMAND files recorded from ATI TV to MPEG-2 format.

### ***Convert DTV capture to MPEG format***

You can convert video captured from DTV to MPEG-1, MPEG-2, or MPEG-4 format. DTV files currently in the Time Shift buffer and DTV files that you record are automatically added to the Library.

- 1 In the Library content window, right-click the VCR file you want to convert.
- 2 In the shortcut menu, click **Export**. The Export Wizard opens.
- 3 In the Export Wizard, select a format from the list.
- 4 Click **Next**. The Export Wizard prompts you for a password to unscramble video that may be blocked by Parental Control. If you do not enter a password, the Export Wizard continues but any portions of the video that are blocked by Parental Control will be scrambled during playback.
- 5 In the Export Wizard enter a location and file name for your exported file.
- 6 Click **OK**.

## Creating DVDs and CDs

You can create your own DVDs and CDs with the Create Media Layout feature. The Create Media Layout feature walks you through the media disk creation process. You can specify a video format, select a menu style, specify the disk content files, and then burn the disk.

### **Create a DVD, VCD, or SVCD**

- 1** In the upper-right of the Library window, click the **Create media layout** button. The Select video format dialog opens.
- 2** Click inside the **Menu Title** and at the insertion point, type a name for your menu title.
- 3** In the Video Mode section, select either **NTSC** or **PAL** option. The NTSC mode is selected by default.
- 4** In the Video Format section, choose the **DVD**, **VCD**, or **SVCD** option. The DVD video format is selected by default.
- 5** Click **OK**. The **Select Menu** dialog opens.
- 6** In the Select Menu dialog, choose a menu style from the Select Menu list.
- 7** Click **OK**. The Select Menu dialog closes and the playlist window opens.
- 8** In the upper pane of the Library window, select a file you want to write to your disk and drag your files to the playlist. To select more than one file, use **Shift + click** or **Ctrl + click**.
- 9** To rearrange the file order, select the file you want to move, and then click the **Move** buttons.
- 10** In the lower-right of the Library window, click the **Burn Media** button. The Burn Disk dialog opens.
- 11** In the **Burn Disk** dialog, choose the disc drive, burning speed, and number of copies or use the default settings.
- 12** Click **Record**.

### **Making a Playlist**

The ATI Multimedia Center™ Library lets you create a playlist. With a playlist you can play files in a sequence you specify. You can play your selection in a continuous loop or shuffle your selection so they play in random order.

## **Create a playlist**

After you have scanned your system for media content, you can create a playlist from any of the files in the Library window.

- 1 If necessary, in the Library dialog, click the **Show Playlist** button. The playlist window opens in the lower part of the Library dialog.
- 2 In the Library content window, select the file or files you want to include in your playlist and drag them into the playlist window.

## **Arrange playlist files**

Once you have added the files you want to the playlist window, you can arrange the files in the order you want to play them.

- 1 In the playlist window, click on the file you want to rearrange.
- 2 In the lower-right of the Library dialog, click the **Move the currently selected title earlier** or **Move the currently selected title later** button.

## **Remove playlist files**

- In the lower-right of the Library dialog, click the **Remove the currently selected entry** button. The selected file is removed from the list.

## **Remove all playlist files**

- In the lower-right of the Library dialog, click the **Clear the playlist** button. All playlist files are removed from the playlist window.

## **Play the playlist files**

- In the lower-right of the Library dialog, click the **Start the playlist** button. Your files play in the order you have specified.

## **Shuffle the playlist order**

- In the lower-right of the Library dialog, click the **Shuffle the playlist order** button. The files play in random order.

## **Loop playlist order**

- In the lower-right of the Library dialog, click the **Loop the playlist** button. The playlist repeats until you stop it.

# Index

## Numerics

16

9 (*aspect ratio*) 88

4

3 (*aspect ratio*) 88, 135

## A

alarm clock 32

Alarm Settings 21

Always on top 81

angle 141, 152

Aspect Ratio 50, 68, 86, 87, 88, 127, 128, 135, 136, 146, 149

ATI Multimedia Center 7, 9, 10, 11, 13, 14, 15, 17, 18, 47, 48, 49, 59, 65, 66, 79, 83, 125

ATI Remote Wonder 9

Audio 10, 65, 77

audio 11

Audio Mode 77

Auto Scan 25

## B

bookmarks 130, 147, 148

brightness 86, 91, 92, 131

Buffer 164

## C

Cathode Ray Tube (CRT) 120

CD 7, 9, 37, 38, 39, 40, 41, 42, 43, 44, 45, 50, 58, 59, 61, 65, 66, 67, 68, 69, 70, 71, 73, 74, 75, 76, 77, 78, 79, 80, 106, 111, 112, 138, 159

CD audio 43

chapter 139, 142, 143, 147, 148, 149, 151, 152

Closed Caption 69

closed caption 54, 55, 56, 70, 71, 96, 97, 133

Closed Captions 48, 62, 63, 65, 84, 116, 125, 127, 133, 135, 141, 149

Color 56, 57, 69, 71, 72, 92, 109, 110, 131, 133, 137, 142

Configuration 9

contrast 86, 91, 92, 131

Control Panel 119, 120

Currently Tuned Frequency 22

**D**

Dashboard 23, 24, 25, 27, 28, 29, 30, 31, 32, 33, 37, 38, 39, 41, 43, 44, 48, 49, 50, 51, 52, 53, 54, 55, 56, 57, 58, 59, 60, 61, 62, 65, 66, 67, 71, 72, 74, 76, 77, 78, 79, 80, 81, 84, 85, 87, 88, 93, 94, 95, 96, 97, 98, 99, 100, 102, 103, 104, 106, 107, 108, 109, 110, 112, 113, 114, 115, 116, 117, 118, 119, 121, 122, 125, 126, 127, 128, 137, 138, 139, 140, 141, 142, 143, 144, 145

Dolby Pro Logic 11

DVD 7, 9, 11, 39, 47, 59, 69, 74, 77, 79, 83, 106, 112, 125, 126, 127, 128, 129, 130, 131, 132, 133, 134, 135, 136, 138, 139, 140, 141, 142, 143, 144, 145, 146, 147, 148, 149, 150, 151, 159, 165

DVI 120

DVI-I 120

**E**

EazyConnect 7, 9

EazyLaunch 17, 18, 19

EazyLook 9, 17, 18

Eject 65, 77, 80, 81

Exit 21

Exit full screen 81

**F**

File Name 48

File Number 48

File Player 9, 42, 47, 48, 49, 50, 51, 52, 53, 54, 55, 56, 57, 58, 59, 60, 61, 62, 63, 73, 74, 111, 112, 138

File Types 9

FM 9

FM Radio 9, 10, 11, 12, 13, 15, 21, 22, 23, 24, 25, 26, 27, 28, 29, 30, 31, 32, 33, 34, 53, 159

    Dashboard 21

FM Station List 23

FM Station list 23, 24

FM-on-Demand 21, 22, 26

frame rate 133

**G**

gamma 86, 91, 92, 131

**H**

Help 7, 21, 37, 42, 45, 58, 63, 73, 81, 111, 120, 122, 151

HotWords 98, 99, 100, 101

Hue 131

**K**

keyboard shortcut 24

**L**

LaunchPad 7, 8, 9, 10, 66



Library 7, 9, 26, 28, 47, 119, 159, 160, 161, 162, 163, 164, 165, 166

Looping 48, 63

## M

Media Player 9

MicroDVD 133, 134, 142

MIDI 47

Minimize 21

Mono 22

mono 24

movie 68

MP3 21, 26, 28, 31, 161

MPAA 144

MPEG 47

MPEG-2 47, 164

multimedia 7, 47, 159, 161, 162

multi-monitor 120

Mute 21, 33, 34, 37, 44, 45, 48, 56, 61, 63, 65, 76, 81, 97, 117, 120, 122, 125, 135, 141

## N

Next File 48, 63

Next Segment 66, 80

NTSC 119, 165

## O

Open File 48, 63

## P

PAL 119, 165

Pause 21, 48, 63, 65, 80

Play 21, 48, 63, 65, 80

Playback 21, 22, 31, 35, 37, 44, 45, 145

Position 48, 66

Preset Stations 21

Previous File 48, 63

Previous Segment 65, 80

## R

radio 7, 22, 23, 24, 25, 29, 30, 31, 32

Record 21

record 25, 26, 28, 29, 30, 86, 103, 105, 106, 108, 109, 117, 120, 147, 159, 164

Remote Wonder 17, 18, 19

Remote Wonder II 17, 18, 19

Resolution 87

## S

Saturation 86, 91, 92, 131

Scan Down 21  
Scan Up 21  
schedule 22, 28, 29, 30, 37, 42, 43, 58, 59, 60, 61, 73, 74, 75, 76,  
83, 111, 112, 138, 139, 153  
Set End Marker 21  
Set Start Marker 21  
Setup 22, 48, 63, 66, 80  
Show Preset Stations 21  
Size presets 81  
Skins 9, 13, 14  
Skip Back 21, 48, 65, 80  
Skip Backwards 63  
Skip Forward 48, 65, 80  
Skip Forwards 21  
Sleep Timer 25  
snooze 32, 33  
Station Name 22  
Stereo 22  
stereo 11, 24  
Still Capture 48, 63, 65  
Still capture 80  
Still Gallery 56, 57, 58, 62, 65, 71, 72, 76, 86, 109, 110, 112, 116,  
127, 136, 137, 138  
Stop 48, 63, 65, 80  
SubViewer 133, 134, 142  
S-Video 94, 116, 117, 119

**T**

ThruView 51, 88  
Time 48  
Time Mode 48, 63  
Time Mode Display 22  
Toggle closed captions 80  
Toggle full screen 81  
Toggle Play 80  
tool tips 24  
Tune Down 21  
Tune Up 21  
TV 7, 9, 11, 47, 59, 74, 83, 84, 85, 86, 87, 88, 89, 90, 91, 92, 93,  
94, 95, 96, 97, 98, 99, 100, 101, 102, 103, 104, 105, 106, 107,  
108, 109, 112, 113, 114, 115, 116, 117, 118, 119, 120, 121, 122,  
123, 135, 138, 146, 153, 164  
TV Magazine 102, 103, 138

**U**

Unzoom 48, 63, 65, 81

**V**

VCD 69, 79, 80, 165

VCR 47, 62, 83, 159, 161, 164

VGA 120

Video 7, 9, 10, 11, 42, 47, 50, 55, 58, 59, 61, 65, 66, 67, 68, 69, 70, 71, 73, 74, 75, 76, 77, 78, 79, 80, 83, 86, 87, 88, 94, 96, 101, 105, 106, 107, 108, 111, 112, 116, 117, 119, 123, 127, 130, 131, 134, 138, 146, 165

Video In, Video Out (VIVO) 117

Volume 22, 48, 66

Volume down 80

Volume up 80

**W**

WAV 47

Windows 8, 10, 17, 18, 19, 22, 25, 38, 48, 56, 57, 58, 66, 71, 72, 73, 85, 105, 109, 110, 137, 164

Wizard 29, 30, 42, 43, 58, 60, 61, 73, 74, 75, 85, 86, 87, 89, 90, 91, 97, 98, 99, 100, 101, 102, 103, 104, 105, 107, 111, 112, 113, 117, 128, 130, 138, 139, 147, 156, 163, 164

WMA 47

**Z**

Zoom 48, 63, 65