

# MM PRO 16SD / MM PRO 16 SD-3D SOUND CARD

## **EASY START** **READ ME FIRST**

	Page
Notes/Safety Precaution .....	2
Installing the Sound Card .....	3
Connecting Audio Equipment .....	5
Installing the Sound Card Drivers .....	6

**Version 1.0**

- Microsoft, MS-DOS and Windows are registered trademark of Microsoft Corp.
- All other company or product names are trademarks or registered trademarks or service marks of their respective owners.

## Notes

- While your Multimedia PnP Sound Card may work with most systems, it is recommended to install the Multimedia PnP sound card on a system with PnP capabilities.
- Computers come in different shapes and sizes. Therefore, the installation instructions in this booklet apply generally and you should compare the drawings here with your computer before you begin.
- You will require a Philips Screwdriver to complete the installation. You may want to refer to your computer user's guide during the installation.

## Safety Precaution

Static electricity can cause permanent damage to your sound card. To prevent such a damage, you must ground yourself while installing the sound card. You can do this in either of two ways :

- Use a grounding strap, which is a coiled wire with a clip at one end and an elastic strap at the other. Wear the strap around your wrist and attach the clip to any non-painted metal surface of the computer's chassis.
- If you do not have a grounding strap, touch any non-painted surface of the computer's chassis before you begin installation, and again every minute or so until the installation is completed.

**Next ...**

➤ Install the sound card

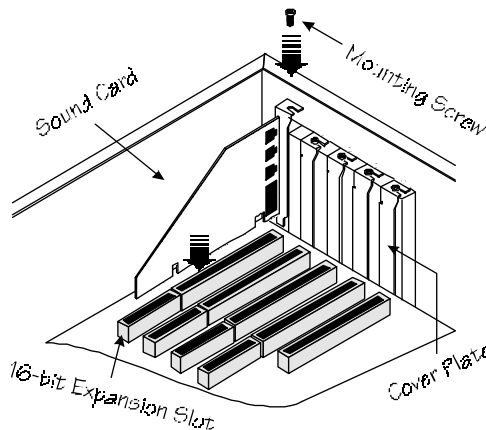
## Installing the Sound Card

1. Turn off your computer.
2. Remove the cover of your computer's chassis.

You may want to refer to your computer's user guide for specific instruction on removing the computer's chassis cover.

3. Select any available 16-bit expansion slot.

Use the diagram below as a general guide for installing your sound card.



4. Remove the selected expansion slot's cover plate. Retain the mounting screw to secure the sound card later.
5. Using a gentle back-and-forth rocking motion, press the sound card firmly into the selected expansion slot until it snaps in place.
6. Secure the sound card by replacing the mounting screw.

7. Your sound card may include a built-in IDE CD-ROM interface connector. This allows you to connect an IDE CD-ROM drive to your sound card.

If you have an IDE CD-ROM drive to be connected to the sound card, do not replace the computer's chassis cover but proceed to install the CD-ROM drive.

Information on how to install the CD-ROM drive into your computer can be found in the user's manual packaged with the CD-ROM drive.

8. Replace the computer's chassis cover and fasten it by replacing the mounting screws.

***Next ...***

- Connect audio equipment to the sound card

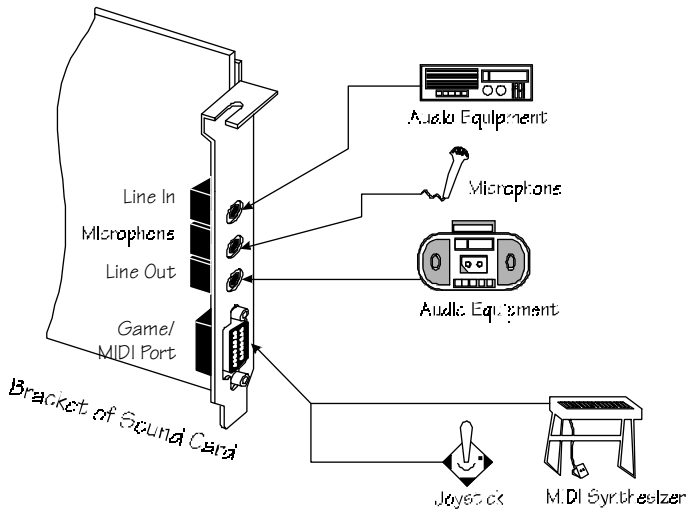
## Connecting Audio Equipment

Your sound card allows you to connect an array of audio equipment. Use the illustration below as a general guide for connecting any audio equipment to the sound card.



All items shown in the illustration are optional and may differ from your actual sound card package (depending on model of sound card).

---



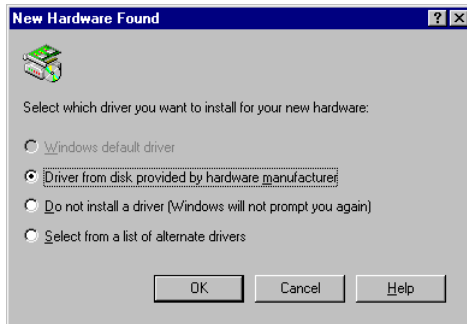
### **Next ...**

- Proceed to install the PnP sound card software.

## Installing the Sound Card Drivers

1. Turn on your computer to start the Windows 95 program.

Windows 95 automatically detects the sound card and displays the **New Hardware Found** dialog box.



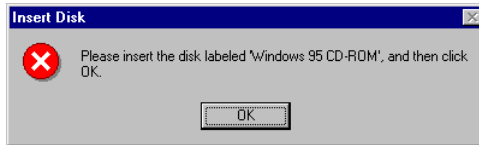
2. Insert **Driver Disk** into floppy drive A or drive B.
3. Select the **Driver from disk provided by hardware manufacturer** option and click **OK**.

The directory selection screen appears.



4. Type **A:\** in the combo box (assuming you have inserted **Driver Disk** into drive A) and click **OK**.

While copying audio drivers, Windows 95 may prompt you to insert the **Windows 95 CD-ROM**. This happens if you did not install Windows 95's multimedia applications (when installing the Windows 95 software).



5. Insert the required CD and click **OK**.

Note that the various files required by Windows 95 can be found under the **\WIN95** directory on the CD.

After Windows 95 has finished setting up the sound card, it will return you to the Windows 95 Desktop.

This completes the installation of your sound card.

